



FARMSIDE GREEN
LECONFIELD

BY
together
homes



Your Best Life

The spectacular Farmside Green development is located in Leconfield, near the picturesque market town of Beverley in the East Yorkshire countryside.

The development is perfectly located for those who are looking to combine the peaceful rural lifestyle with the convenience of a short drive into Hull city centre and easy access to the M62.

The friendly village boasts a handy post office, a small primary school and a recreation club which provides plenty of family-friendly events. The nearby town of Beverley is just three miles away from Farmside Green and will provide you with everything you need, from supermarkets, lovely cafes and restaurants to local weekend markets and a cinema.



Your dream home

At Together Homes, we are passionate about helping you find and move into your dream home, whether you are new to the property ladder or aspiring to move up it.

Your brand new, energy efficient home boasts a modern fitted kitchen with integrated appliances and white goods included. There are generous rooms within, and to the exterior, you can enjoy private parking and a spacious garden with patio.

Shared Ownership is a fantastic way to start out on the property ladder if you can't quite afford the mortgage on 100% of a home.

Put simply you part buy, part rent your home. You purchase a share, usually between 25% and 75%. You then pay a proportionate rent to us for the share you don't own.

Rent is paid on the share of the property we own. If you buy an initial 50% share you will pay rent on the remaining 50% share - the amount of rent depends on the value of your home and is reviewed annually in line with inflation.

You can buy greater shares in your home as and when you can afford to. This process is called Staircasing. In many cases, you can eventually own 100% of your home outright, at which point you will pay only your mortgage, but no rent. Service charges or management fees may apply.

Shared Ownership homes are often popular with first time buyers. However, we also recognise that circumstances can change at any time in your life so our schemes are not exclusive to first time buyers. Shared Ownership could ensure you remain on the property ladder even through difficult times such as a relationship breakdown or a change in financial circumstances.

Ask the Together Homes team today about Shared Ownership

Our specialist sales team have a wealth of experience of our buying options and will expertly guide you through the home buying experience and beyond.



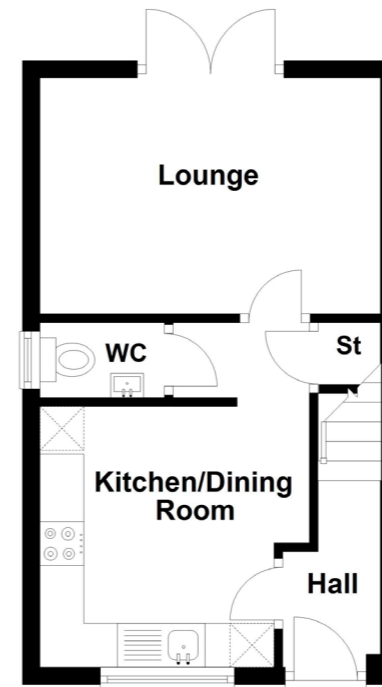
The Danbury | 3 Bedroom Semi-Detached



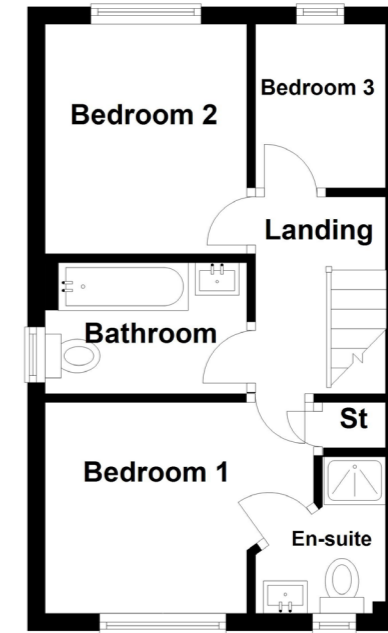
The Danbury | 3 Bedroom Semi-Detached

This appealing new build home is set over two floors. The ground floor features a spacious lounge with double doors leading out onto a rear garden, a combined kitchen and dining room, and is rounded off by a downstairs w.c. and a storage cupboard.

Upstairs to the first floor is a modern bathroom with bath, w.c and basin, and a storage cupboard. The master bedroom is complete with en-suite bathroom, a double bedroom and a smaller single bedroom, perfect either for a child or for use as a home office.



Ground Floor



First Floor

The Rothway | 4 Bedroom Detached

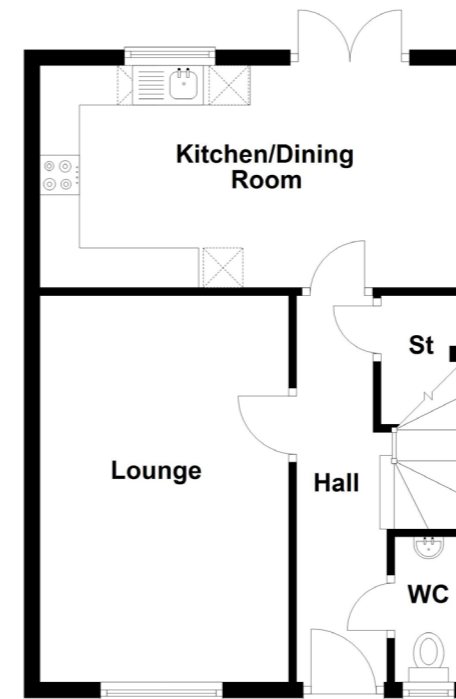


The Rothway | 4 Bedroom Detached

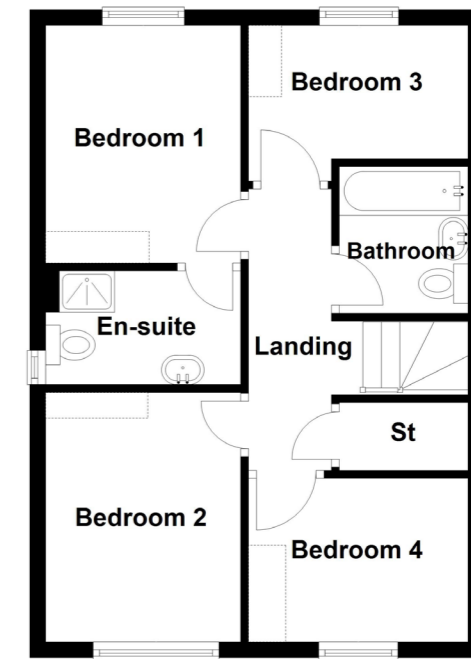
This well-appointed home is set over two floors. The ground floor consists of a downstairs w.c., a storage cupboard, a spacious lounge and an open kitchen and dining room, with French doors leading out onto the private rear garden.

Upstairs, we find a bathroom with bath, basin and w.c., and a storage cupboard off the landing. This floor features four bedrooms; a master bedroom with en-suite bathroom, a double bedroom and two single bedrooms, which could also be utilised as a home office.

Ground Floor



First Floor



The Hardwick | 4 Bedroom Detached



The Hardwick | 4 Bedroom Detached

This spectacular home is set across three floors. Downstairs, the property comprises a spacious lounge with a bay window allowing for plenty of natural light, a kitchen and dining room with double doors leading out onto a private rear garden, a downstairs w.c. and storage cupboard.

Upstairs to the first floor, there is a master bedroom with en-suite bathroom, complete with shower, toilet and basin, and a double bedroom, a modern family bathroom with bath, w.c. and basin. The first floor is rounded off by a storage cupboard.

The second floor features a double bedroom, a single bedroom with storage spaces and a small bathroom with shower, w.c. and basin.



The Westbury | 4 Bedroom Semi-Detached



The Westbury | 4 Bedroom Semi-Detached

This luxurious home is set over three floors. The ground floor consists of a porch to the entrance of the house, a garage which can be accessed from the hallway, a storage cupboard, downstairs w.c. and a large kitchen and dining room, with French doors leading outside to the rear garden.

Upstairs to the first floor, we find another storage cupboard on the landing, the lounge with sliding doors leading out onto your private balcony, the bathroom with w.c., basin and bath and a double bedroom with access to the main bathroom.

The second floor features a storage cupboard, the master bedroom with en-suite bathroom, a second double bedroom and a single bedroom, which can also be utilised as a home office or children's playroom.





LANDSCAPE
MAN
**MAKING
A GARDEN**
MATTHEW WILSON

JOHN H
CHRONI
AN
GLES SPA
THEM AT

together
& homes

www.mytogetherhome.co.uk

hello@mytogetherhome.co.uk

0300 330 5533