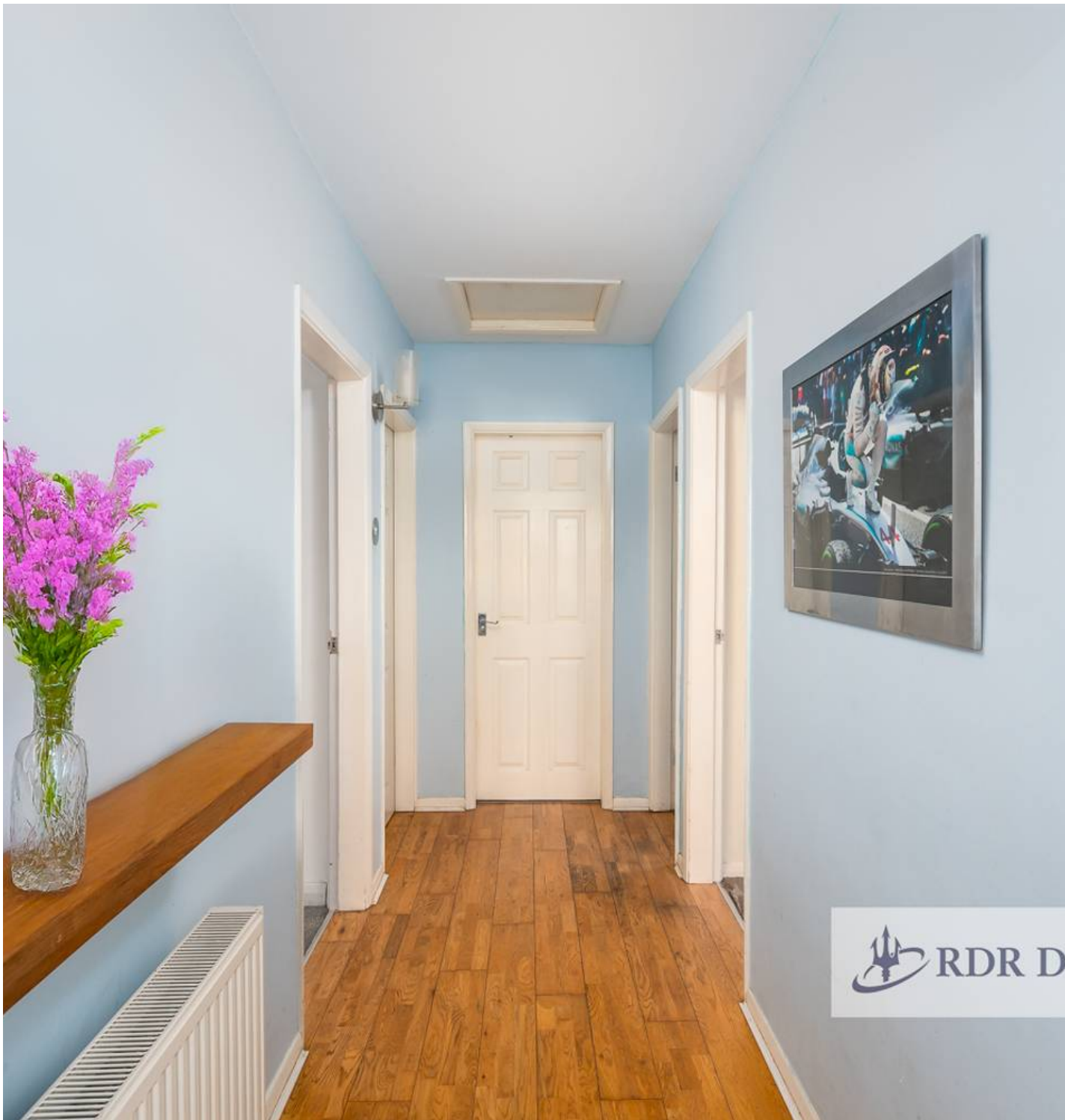




12a Lythall Close, Radford Semele
Leamington Spa

 **RDR DASSAUR** Offers Over **£270,000**



12a Lythall Close

Radford Semele, Leamington Spa

Tucked away in a peaceful cul-de-sac, this semi-detached bungalow offers the perfect blend of comfort and style. With two spacious bedrooms, it's ideal for downsizers, retiree's or small families looking for a convenient and welcoming home.

Council Tax band: C

Tenure: Freehold

- No Onward Chain
- Quiet cul-de-sac
- Semi-Detached Bungalow
- Two bedrooms
- Garage
- Close to the village of Radford Semele



Lounge

14' 5" x 10' 10" (4.40m x 3.30m)

Lounge to the front elevation

Kitchen

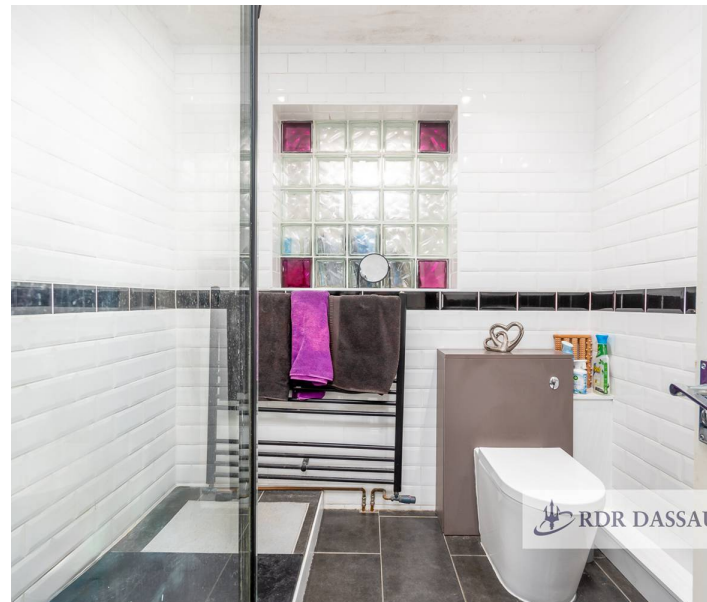
10' 6" x 10' 10" (3.20m x 3.30m)

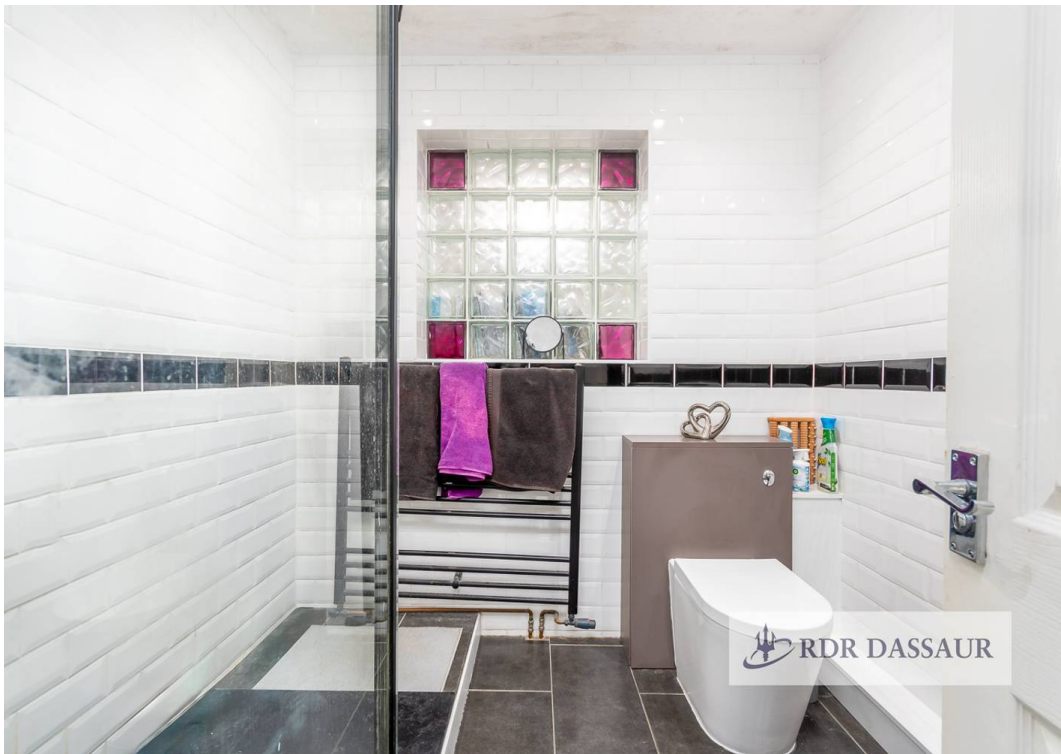
Conservatory

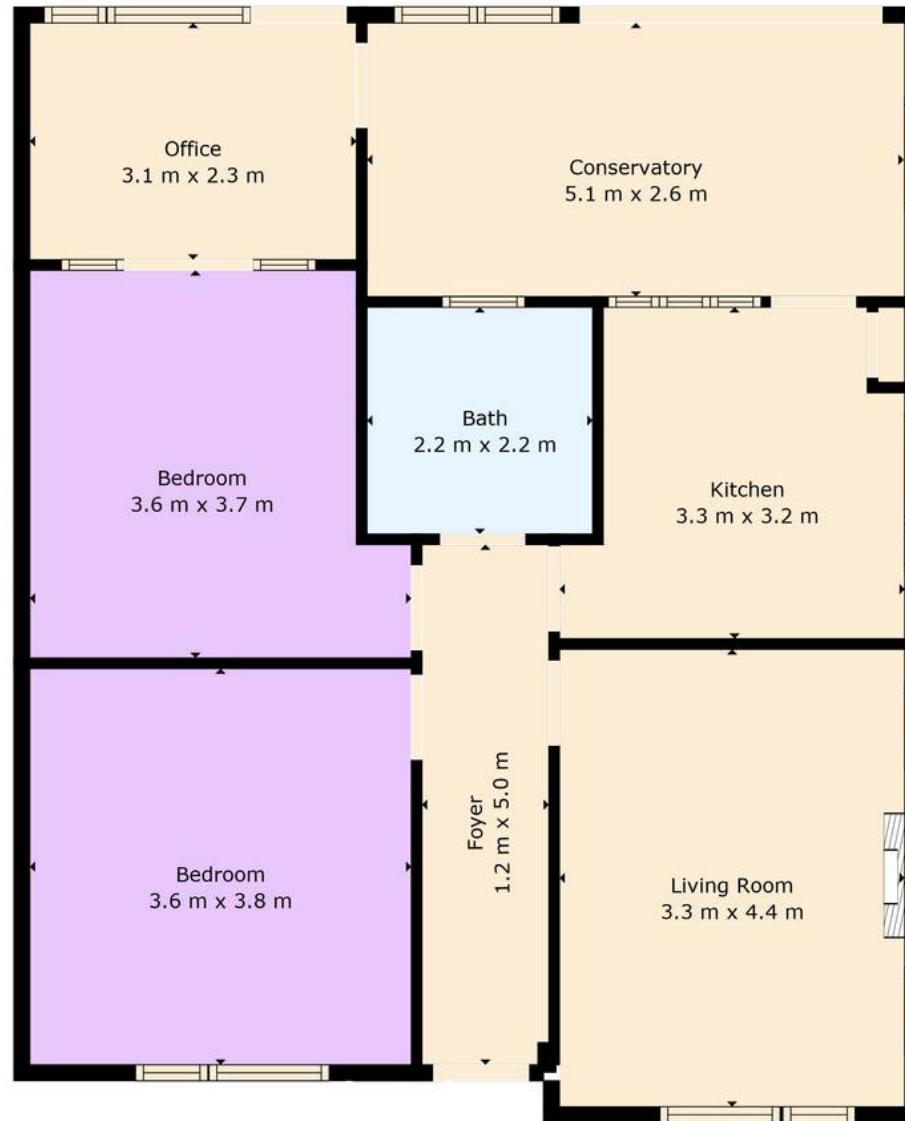
8' 6" x 16' 9" (2.60m x 5.10m)

Office

7' 7" x 10' 2" (2.30m x 3.10m)







TOTAL: 84 m²
BELOW GROUND: 0 m², FLOOR 2: 84 m²
EXCLUDED AREAS: GARAGE: 30 m²



RDR Dassaur estate agents

Unit 2 Nelson Dale Wharf Street, Warwick - CV34 5LB

01926268989

Admin@RDRDassaur.co.uk

rdrdassaur.co.uk/

