



## Flat 4, Royal Pines Hesketh Road, Torquay – TQ1 2LN

Guide Price £330,000







## Flat 4

Royal Pines Hesketh Road, Torquay

Spacious 3-bed coastal apartment in Torquay's Meadfoot area with private patio and sea views. Ground floor with en suite, communal gardens, garage, and visitor parking. Gas central heating, uPVC double glazing. Ideal location for woodland walks and serene living. Council Tax band: E

Tenure: Leasehold

EPC Energy Efficiency Rating: C

EPC Environmental Impact Rating:





## Flat 4

Royal Pines Hesketh Road, Torquay

Royal Pines occupies a most sought after position on the headland of Meadfoot, which encompasses the fabulous sea views. The property is within close proximity to Meadfoot Beach and the Meadfoot Beach cafe, local dog walks and Wellswood Village with its excellent selection of boutique shops, restaurants and cafes, post office, pharmacy and more. There is also easy access to Torquay seafront, lively town centre and deep water marina, with an enviable array of restaurants, bars, shops and further amenities.

### Absolute Sales & Lettings

Absolute Sales & Lettings Ltd, 13 Ilsham Road - TQ1 2JG

01803 214214

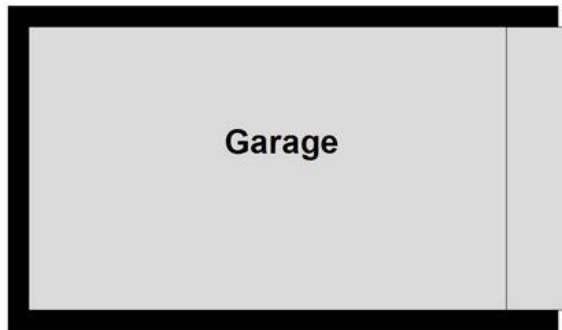
[torquay@movewithabsolute.co.uk](mailto:torquay@movewithabsolute.co.uk)

[movewithabsolute.co.uk/](http://movewithabsolute.co.uk/)

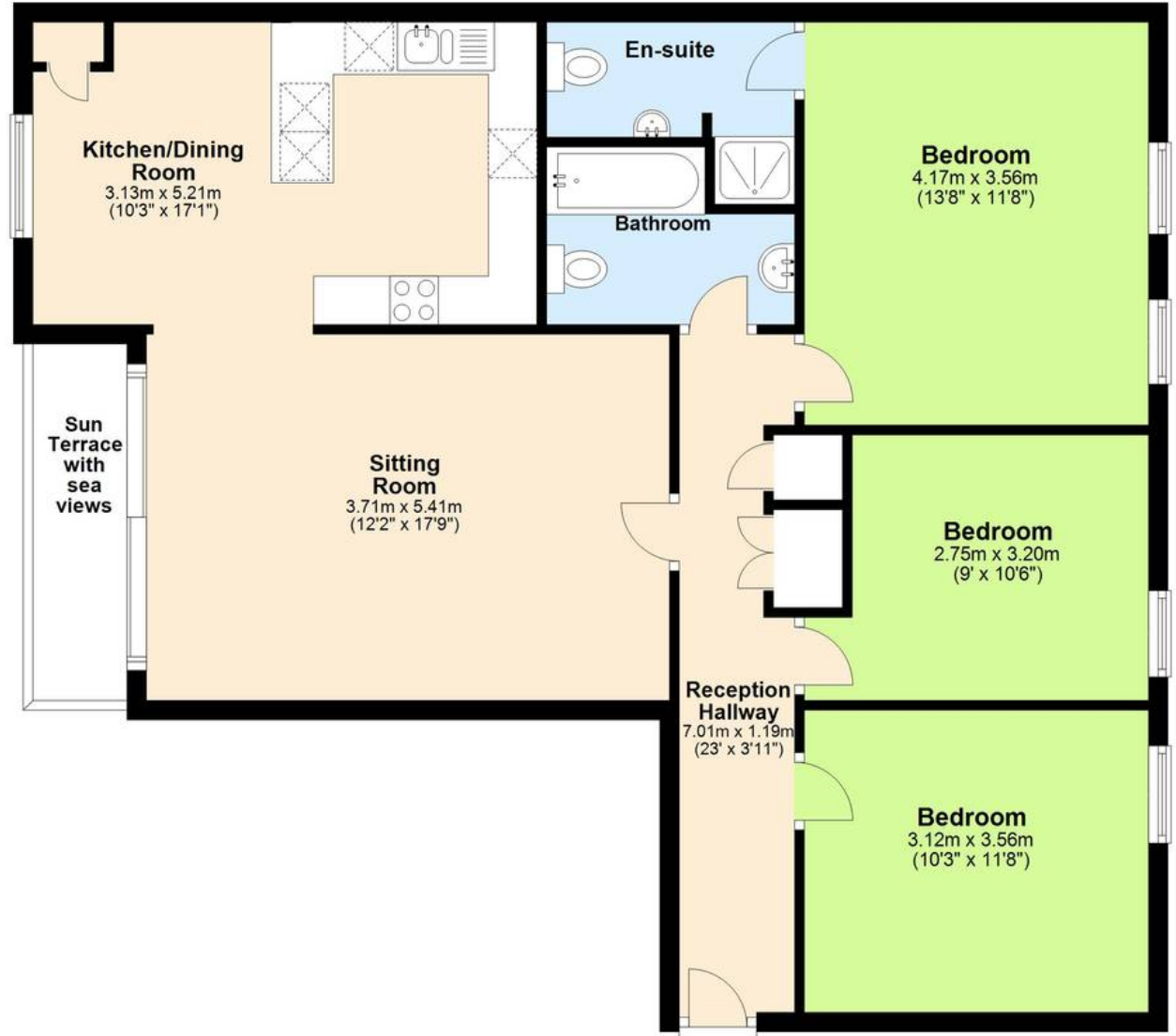


## Ground Floor

Approx. 91.8 sq. metres (988.6 sq. feet)



Garage



**Kitchen/Dining Room**  
3.13m x 5.21m  
(10'3" x 17'1")

**Sun Terrace with sea views**

**Sitting Room**  
3.71m x 5.41m  
(12'2" x 17'9")

**En-suite**

**Bathroom**

**Bedroom**  
4.17m x 3.56m  
(13'8" x 11'8")

**Bedroom**  
2.75m x 3.20m  
(9' x 10'6")

**Reception Hallway**  
7.01m x 1.19m  
(23' x 3'11")

**Bedroom**  
3.12m x 3.56m  
(10'3" x 11'8")

Total area: approx. 91.8 sq. metres (988.6 sq. feet)

Approx  
Plan produced using PlanUp.

