



Flat 4, The White House, 15 Milbourne Lane  
£1,350 pcm

**DAVIES**  
PROPERTY PARTNERS



# Flat 4

The White House, Esher

A well proportioned one bedroom first floor flat benefitting from a private entrance and that overlooks the large communal garden. EPC D. Council Tax band: TBD

- One bedroom
- Ample storage
- Brand new bathroom suite
- Communal gardens
- Off street parking
- Private garage
- Unfurnished
- Available from 4th November

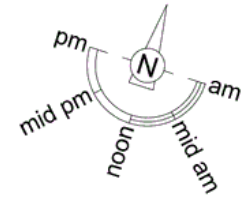





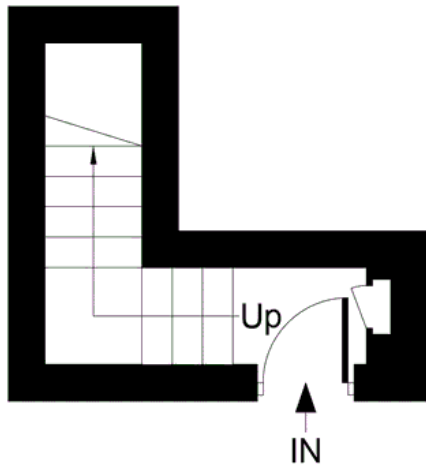


# The White House, Esher, KT10

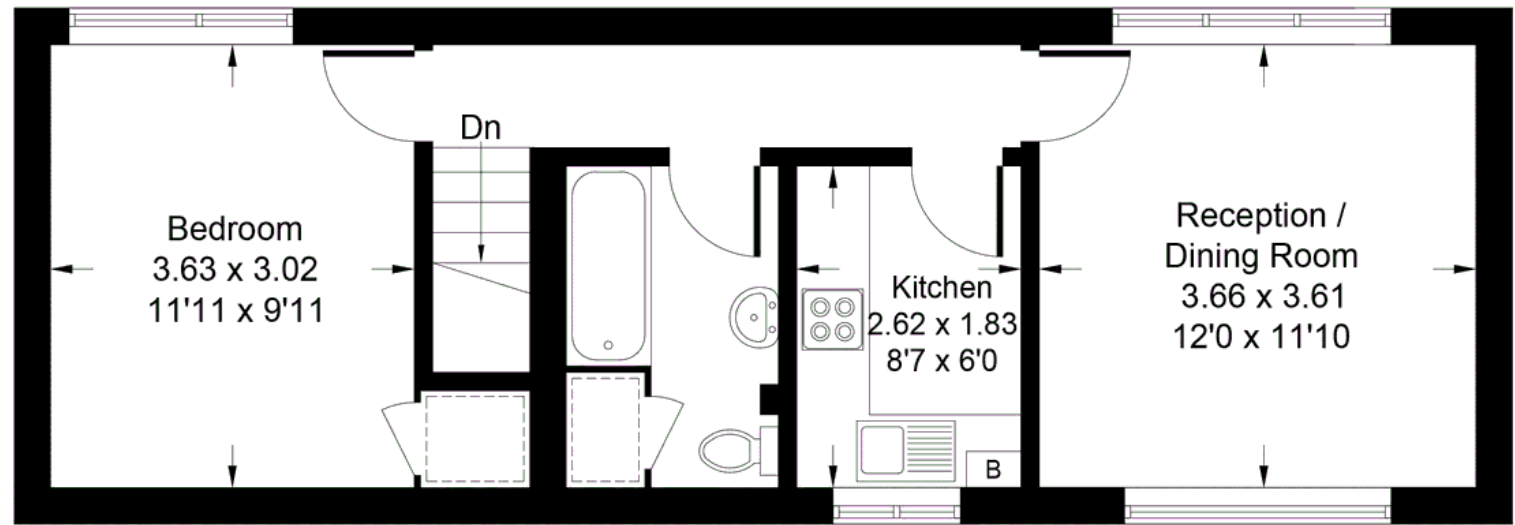
Approximate Gross Internal Area  
46.8 sq m / 504 sq ft



 = Reduced headroom below 1.5m / 5'0



**Ground Floor**



**First Floor**