



## 59 Sundowner Newport Road, Hemsby

£25,000 Leasehold

GUIDE PRICE £25,000 - £35,000 - Situated in the desirable coastal village of Hemsby, this charming two-bedroom semi-detached chalet offers an ideal holiday home just a short distance from the seafront. Situated at the end of a terrace, this property boasts a welcoming porch that leads into the open-plan living area and kitchen, two double bedrooms and a neutral bathroom suite.

Communal parking adds convenience.

Council Tax band: A

Tenure: Leasehold

GUIDE PRICE £25,000 - £35,000. Situated in the desirable coastal village of Hemsby, this charming two-bedroom semi-detached chalet offers an ideal holiday home just a short distance from the seafront. Situated at the end of a terrace, this property boasts a welcoming porch that leads into the open-plan living area and kitchen, two double bedrooms and a neutral bathroom suite. Communal parking adds convenience.

### Location

Situated in the heart of Hemsby, Newport Road offers the quintessential coastal village lifestyle. Hemsby is renowned for its stunning sandy beaches, making it a haven for beach lovers and those seeking the refreshing sea breeze. This vibrant village provides a welcoming community atmosphere with local shops, restaurants, and attractions just a stone's throw away. Whether you're strolling along the coastline, enjoying traditional fish and chips, or exploring the nearby Norfolk Broads, Newport Road in Hemsby offers an ideal location for a relaxed coastal lifestyle, filled with leisure and seaside charm.

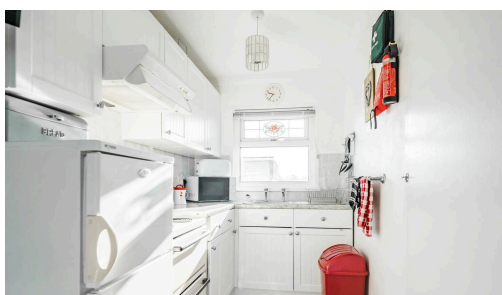
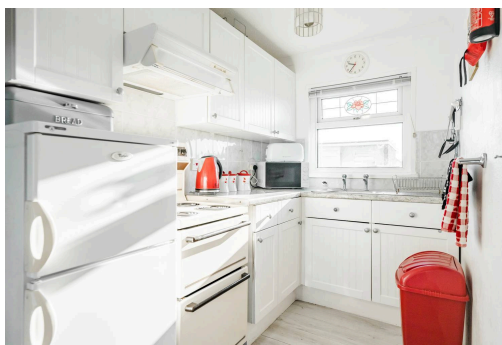


GUIDE PRICE £25,000 - £35,000.

Situated in the desirable coastal village of Hemsby, this charming two-bedroom semi-detached chalet offers an ideal holiday home just a short distance from the seafront. Situated at the end of a terrace, this property boasts a welcoming porch that leads into the open-plan living area and kitchen, two double bedrooms and a neutral bathroom suite. Communal parking adds convenience.

### Location

Situated in the heart of Hemsby, Newport Road offers the quintessential coastal village lifestyle. Hemsby is



GUIDE PRICE £25,000 - £35,000. Situated in the desirable coastal village of Hemsby, this charming two-bedroom semi-detached chalet offers an ideal holiday home just a short distance from the seafront. Situated at the end of a terrace, this property boasts a welcoming porch that leads into the open-plan living area and kitchen, two double bedrooms and a neutral bathroom suite. Communal parking adds convenience.

### Location

Situated in the heart of Hemsby, Newport Road offers the quintessential coastal village lifestyle. Hemsby is renowned for its stunning sandy beaches, making it a haven for beach lovers and those seeking the refreshing sea breeze. This vibrant village provides a welcoming community atmosphere with local shops, restaurants, and attractions just a stone's throw away. Whether you're strolling along the coastline, enjoying traditional fish and chips, or exploring the nearby Norfolk Broads, Newport Road in Hemsby offers an ideal location for a relaxed coastal lifestyle, filled with leisure and seaside charm.

### Newport Road, Hemsby

The spacious lounge is a focal point of this residence and features a large front-facing window that floods the room with natural light, creating a warm and inviting ambience. A fireplace adds a touch of character and provides a cosy atmosphere for gatherings with family and friends. The well-equipped kitchen is conveniently positioned to the lounge and comes complete with built-in cabinets and essential appliances, making meal preparation easy.

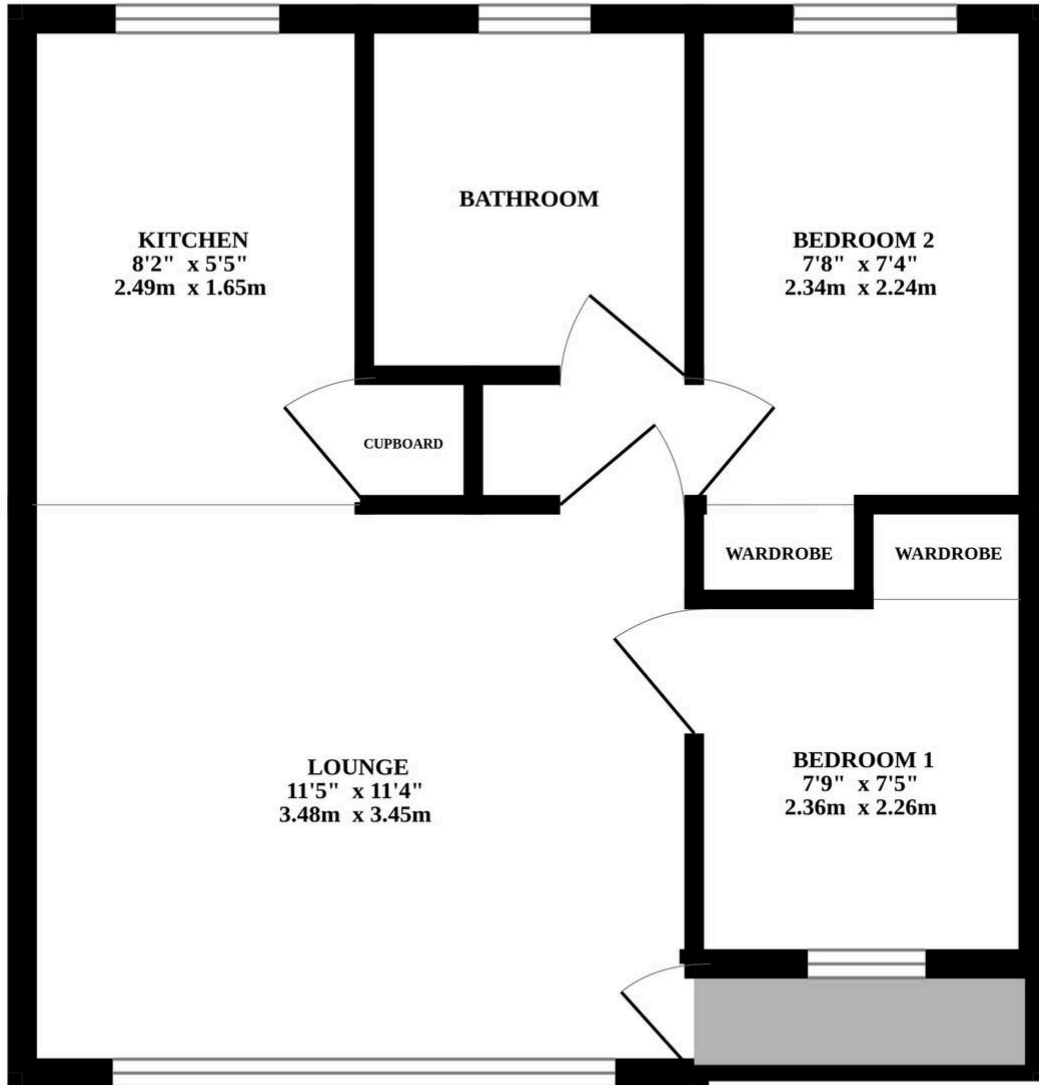
The property further benefits from two generously proportioned double bedrooms, both of which are enhanced by built-in wardrobes offering ample storage solutions. The family bathroom combines style and functionality, featuring a WC, bathtub, and overhead shower head - ideal for unwinding after a day spent exploring the nearby coastline.

Convenience is key with this property, as communal parking facilities are available for residents and guests alike. This ensures that parking is always easily accessible, providing peace of mind to homeowners.

Situated in the picturesque town of Hemsby, this chalet offers easy access to the area's sandy beaches, vibrant seaside attractions and a host of family-friendly activities. This chalet presents an excellent opportunity to acquire a holiday home in the heart of a popular seaside destination. Contact us today to arrange a viewing and start creating cherished memories by the sea!



# GROUND FLOOR



Whilst every attempt has been made to ensure the accuracy of the floorplan contained here, measurements of doors, windows, rooms and any other items are approximate and no responsibility is taken for any error, omission or mis-statement. This plan is for illustrative purposes only and should be used as such by any prospective purchaser. The services, systems and appliances shown have not been tested and no guarantee as to their operability or efficiency can be given.  
Made with Metropix ©2024

You can include any text here. The text can be modified upon generating your brochure.

You can include any text here. The text can be modified upon generating your brochure.

