



20 Wherry Road, Norwich

Guide Price £180,000

20 Wherry Road

Norwich, Norwich

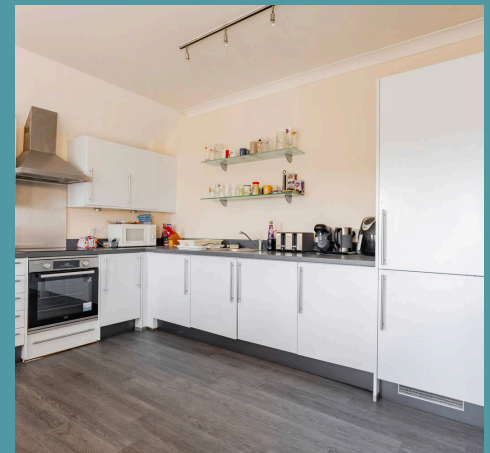
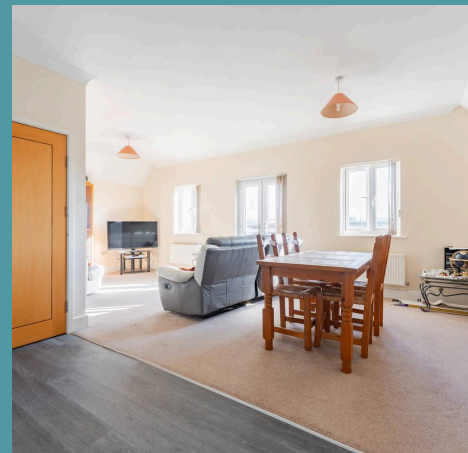
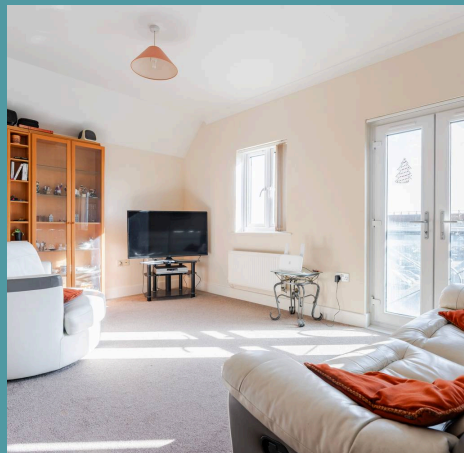
Guide Price: £180,000-£200,000. This modern two-bedroom duplex apartment on Wherry Road combines stylish living with a prime location in Norwich's Riverside area.

Council Tax band: C

Tenure: Leasehold

EPC Energy Efficiency Rating:

EPC Environmental Impact Rating:





20 Wherry Road

Norwich, Norwich

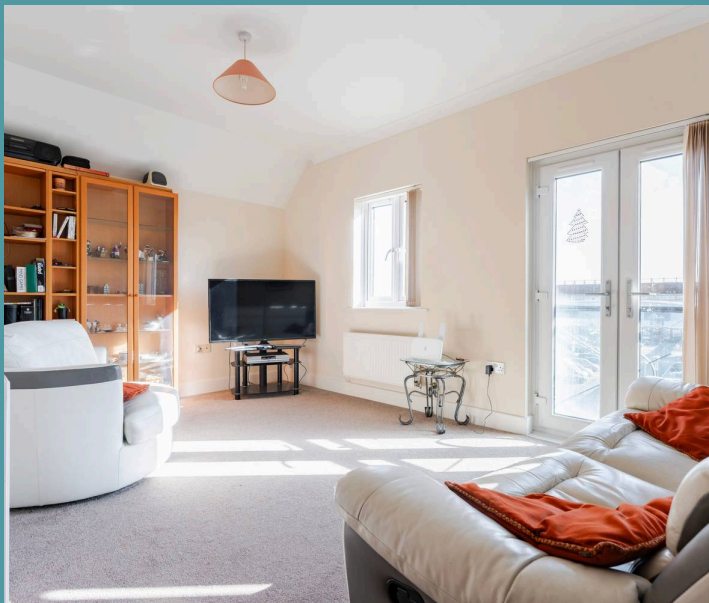
Guide Price: £180,000-£200,000. This modern two-bedroom duplex apartment on Wherry Road combines stylish living with a prime location in Norwich's Riverside area. Spread over two floors, the apartment features a spacious open-plan living area perfect for entertaining, complemented by large double-glazed windows and French doors that lead to a Juliette balcony. The well-appointed kitchen is fully integrated with modern appliances, offering ample counter space and stylish cabinetry. With secure entry, gas central heating, and allocated parking, this property is an exceptional find for anyone seeking comfort and convenience in an urban setting.

The Location

Wherry Road offers a prime location in Norwich's Riverside area, catering to various demographics. Commuters will benefit from being just a 10-minute walk from Norwich Train Station, ensuring quick access to London and surrounding areas. You will find nearby amenities at Riverside Retail Park, which features popular retailers, a cinema and dining options. The vibrant city centre, less than a mile away, boasts historical sites like Norwich Castle and the bustling Norwich Market, perfect for cultural enthusiasts and food lovers alike. With scenic riverfront views and communal garden spaces, this location provides an escape while remaining connected to the city's energetic lifestyle.

Wherry Road

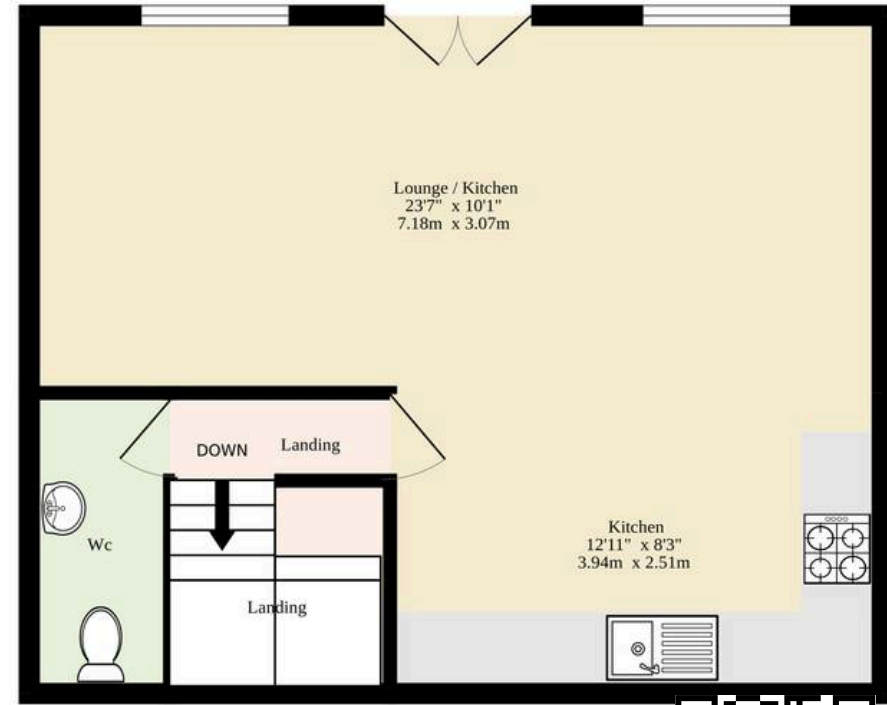
This modern and spacious two-bedroom duplex



Ground Floor
431 sq.ft. (40.0 sq.m.) approx.



1st Floor
394 sq.ft. (36.6 sq.m.) approx.



TOTAL FLOOR AREA : 825 sq.ft. (76.6 sq.m.) approx.

Whilst every attempt has been made to ensure the accuracy of the floorplan contained here, measurements of doors, windows, rooms and any other items are approximate and no responsibility is taken for any error, omission or mis-statement. This plan is for illustrative purposes only and should be used as such by any prospective purchaser. The services, systems and appliances shown have not been tested and no guarantee as to their operability or efficiency can be given.

Made with Metropix ©2025

