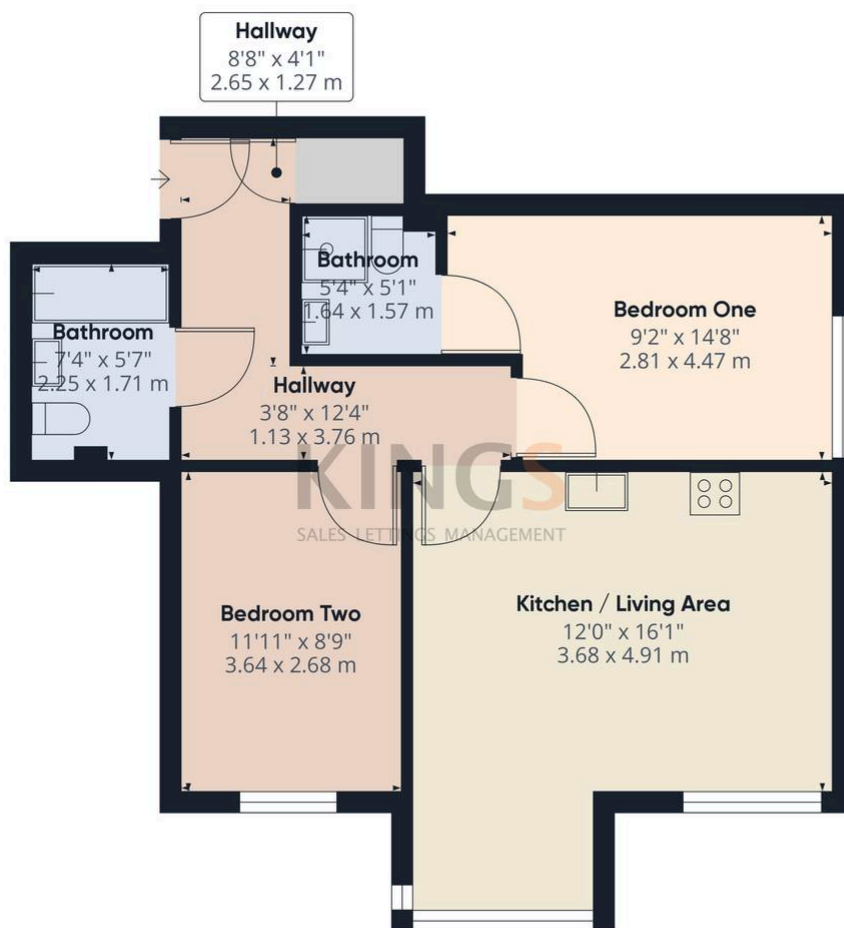


## Highfield House Roe Green Lane, Hatfield

£300,000 Leasehold

FIRST FLOOR APARTMENT • TWO BEDROOMS • MODERN KITCHEN / RECEPTION ROOM • MODERN BATHROOM • MAIN BEDROOM WITH EN SUITE • BEDROOM TWO / STUDY • GAS RADIATOR CENTRAL HEATING • ALLOCATED CAR PARKING SPACE • LEASEHOLD • EPC RATING - B

**KINGS**  
SALES LETTINGS MANAGEMENT



Approximate total area<sup>(1)</sup>  
614.1 ft<sup>2</sup>  
57.05 m<sup>2</sup>

(1) Excluding balconies and terraces

While every attempt has been made to ensure accuracy, all measurements are approximate, not to scale. This floor plan is for illustrative purposes only.  
Calculations are based on RICS IPMS 3C standard.

GIRAFFE360

