



Netil House Medium Studios

Netil House, Westgate Street, London, E8 3RL

290-549 sq ft Office / Studio space in London Fields

290 to 549 sq ft
(26.94 to 51 sq m)

- Creative Office / Studio Space
- Rooftop Bar
- All Inclusive Pricing
- London Fields Station Within Walking Distance
- Industrial-style
- Excellent Natural Light

Netil House Medium Studios, Netil House, Westgate Street, London, E8 3RL

Summary

Available Size	290 to 549 sq ft
Rent	£1,450 per month Inclusive of Utilities, Internet, Service Charge and Business Rates
Business Rates	N/A
Service Charge	N/A
VAT	Applicable
Legal Fees	Each party to bear their own costs
EPC Rating	Upon enquiry

Description

Netil House offers creative office spaces and studios ideal for entrepreneurs, artists, and small businesses. This dynamic building boasts industrial-style architecture with high ceilings, large windows, and plenty of natural light.

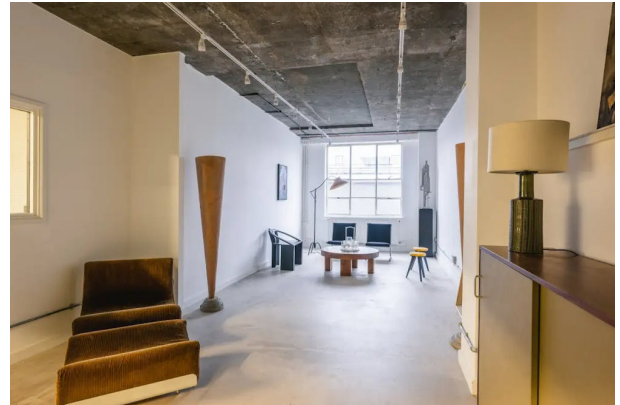
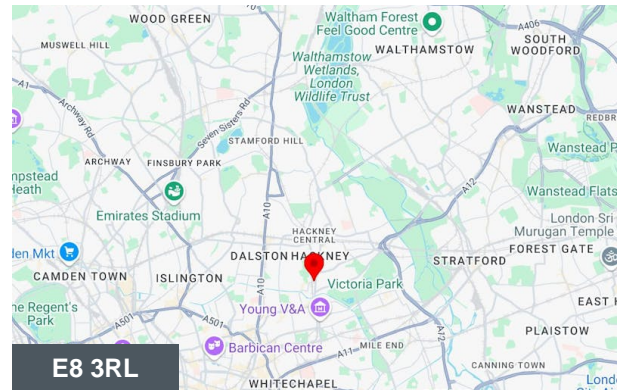
Tenants enjoy access to communal areas, a rooftop bar with stunning city views, and a thriving community of like-minded professionals.

Prices Starting From £1,450 p/m

Location

Situated just minutes from London Fields and Broadway Market, Netil House is perfectly placed for those seeking a dynamic work environment in one of East London's most exciting areas.

A short 6 minute walk away from London Fields overground station.



Viewing & Further Information



George Sarantis

020 7613 4044 | 0731 1077 549
george@fyfemcdade.com



Quba Medford

020 7613 4044 | 07912883110
quba@fyfemcdade.com

