



39 Lydwell Park Road, Torquay - TQ1 3TQ

Guide Price **£325,000**





39 Lydwell Park Road

Torquay, Torquay

This spacious three bedroom end terrace townhouse has accommodation set over three levels and would make a comfortable family home. The accommodation briefly comprises of a front door opening to a dining room with access to the downstairs cloakroom/WC and fitted kitchen. On the first floor there is a sitting room and double bedroom whilst on the second floor there are two further double bedrooms and the family bathroom/WC.

The property sits on a corner plot with gardens to the front, side and rear which are stocked with an abundance of flowering bushes, shrubs and trees. The rear garden is laid to patio for ease of maintenance. A rear gate gives access to a double width driveway and the single garage with up and over door, light and power.

Council Tax band: D

Tenure: Freehold

EPC Energy Efficiency Rating: E

EPC Environmental Impact Rating: E



39 Lydwell Park Road

Torquay, Torquay

The property occupies a much sought after residential position within approximately 500 yards of Wellswood village with its array of boutique shops, facilities and amenities. There is easy access to Babbacombe Downs, Ansteys Cove and Meadfoot Beach. Torquay town centre and sea front are both within approximately 1 miles distance with its further array of shops, facilities and amenities.

Absolute Sales & Lettings

Absolute Sales & Lettings Ltd, 13 Ilsham Road - TQ1 2JG

01803 214214

torquay@movewithabsolute.co.uk

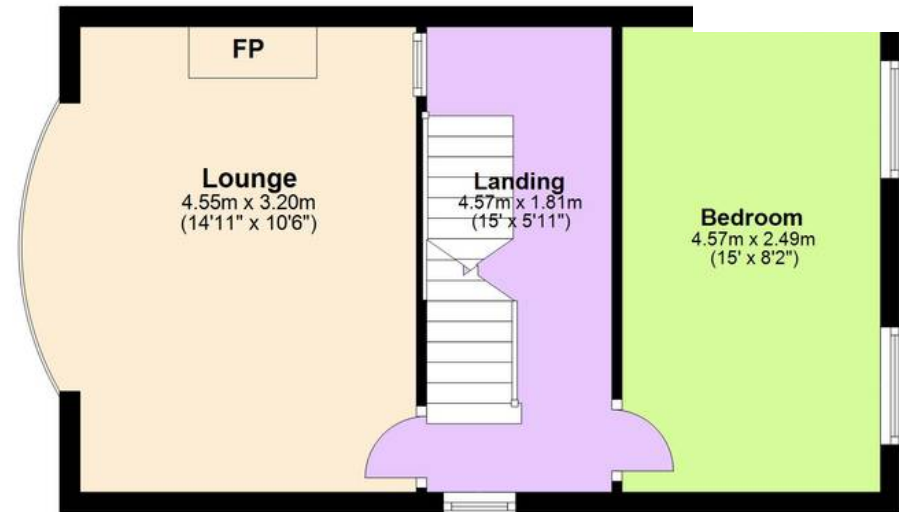
movewithabsolute.co.uk/



ABS

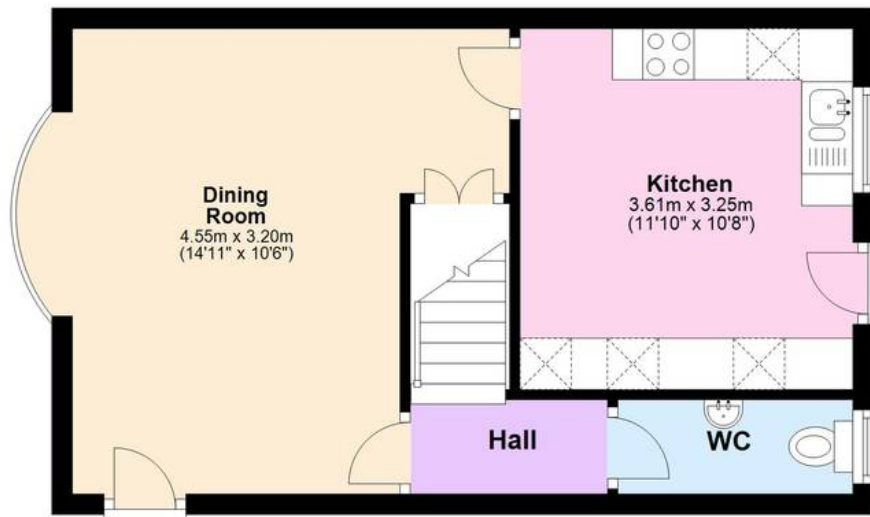
First Floor

Approx. 35.5 sq. metres (382.0 sq. feet)



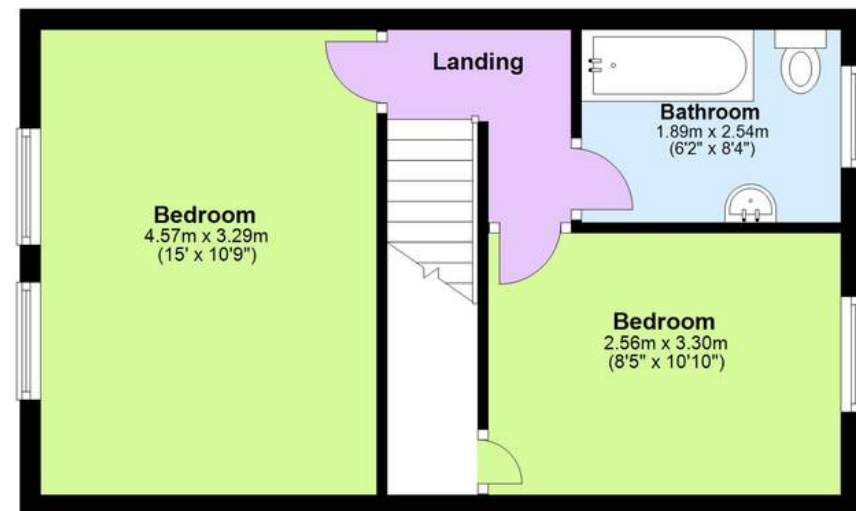
Ground Floor

Approx. 35.2 sq. metres (378.9 sq. feet)



Second Floor

Approx. 34.4 sq. metres (370.8 sq. feet)



Total area: approx. 105.1 sq. metres (1131.6 sq. feet)

Approx
Plan produced using PlanUp.

