

SINCE 1972 · FINDING YOU A HOME
B



Sheringham, Les Varines, St. Saviour

BROADLANDS

FINDING YOU A HOME SINCE 1972

Sheringham, Les Varines

St. Saviour, Jersey



Sheringham, Les Varines

St. Saviour, Jersey

Sheringham is a substantial detached 5 bedroom house which has just been totally refurbished to a high specification throughout, giving you a brand new home on a great size plot. No expense has been spared with quality fixture and fittings throughout. Conveniently located close to the main secondary schools and within a short walk or drive to St Helier's town centre. Built over 3 floors giving you 2369 sq ft of bright and spacious accommodation.

On the ground floor you have an entrance hall, utility room, cloakroom, stunning kitchen/diner with bi-fold doors opening on to your terrace, same as your lounge, office/study with a shower room. On the first floor you have 4 double bedrooms and 3 bathrooms with 2 being En-suite. On the second floor you have a spectacular main suite, with dressing room area and a space for sofa and an En-suite. Offering far reaching views over fields to the sea beyond. The large south facing gardens are private and get the sun all day, plus there is a triple garage and parking for 6 cars on the drive.

With its impeccable craftsmanship, tasteful design, and premium features, this residence offers a unique opportunity to own a prestigious home that is both an elegant retreat and a gracious setting for hosting gatherings yet convenient for a hectic family life..





Living

Entrance hall set up with various storage options, utility room, cloakroom, office/study, shower room, living room, stunning kitchen/diner.

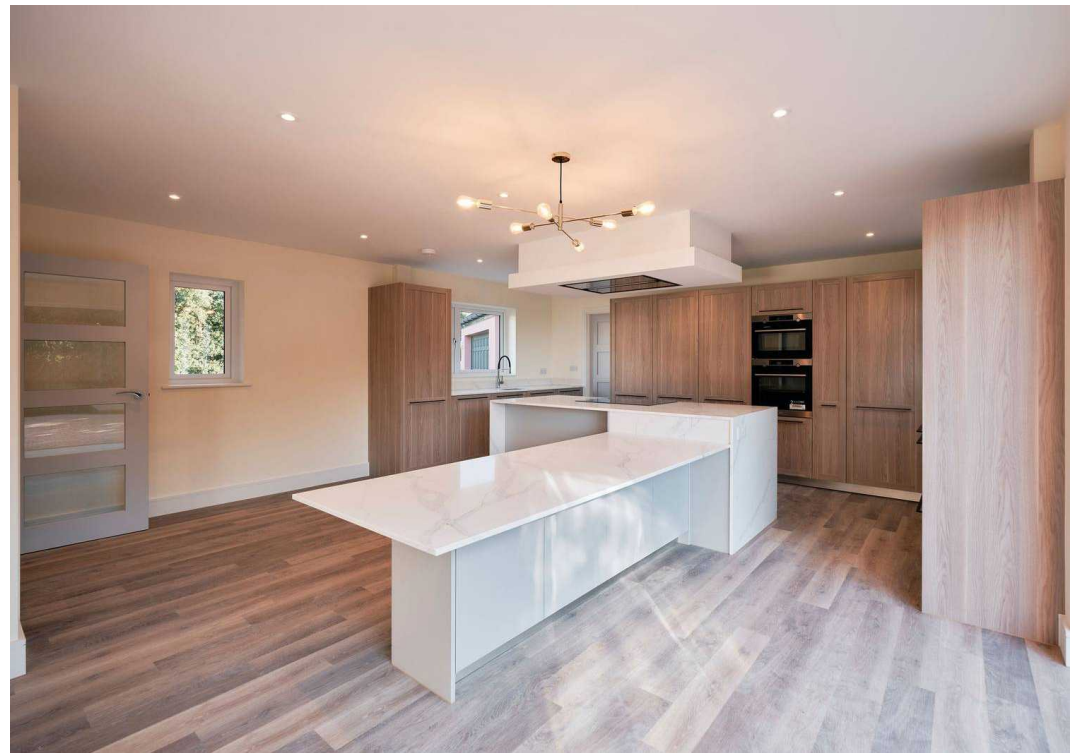
Sleeping

On the first floor you have 4 double bedrooms, 3 bathrooms with 2 being En-suite. On the second floor you have a spacious main principal bedroom suite with dressing area and En-suite.

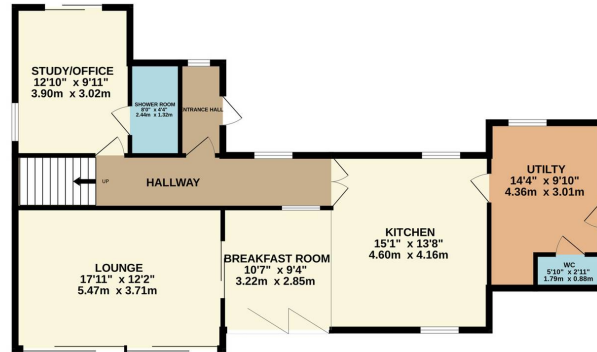
Services

Mains water, no Gas. New oil fired heating system with wet under floor heating on the ground floor and radiators on the 1st and 2nd, electric underfloor heat mats in the bathrooms. New septic tanks. LED lighting throughout.

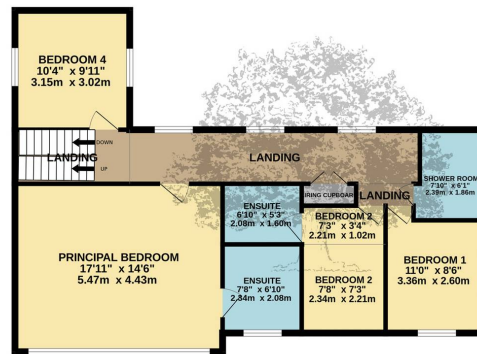




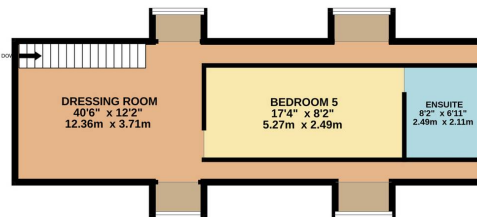
GROUND FLOOR
980 sq.ft. (91.0 sq.m.) approx.



1ST FLOOR
844 sq.ft. (78.4 sq.m.) approx.



2ND FLOOR
545 sq.ft. (50.6 sq.m.) approx.



TOTAL FLOOR AREA : 2369 sq.ft. (220.1 sq.m.) approx.

Whilst every attempt has been made to ensure the accuracy of the floorplan contained here, measurements of doors, windows, rooms and any other items are approximate and no responsibility is taken for any error, omission or mis-statement. This plan is for illustrative purposes only and should be used as such by any prospective purchaser. The services, systems and appliances shown have not been tested and no guarantee as to their operability or efficiency can be given.
Made with Metropix ©2024



FINDING YOU A HOME
SINCE 1972 · **B**

Broadlands

Broadlands Estates, Library Place - JE2 3NL

01534 880770 • enquiries@broadlandsjersey.com • www.broadlandsjersey.com/

BROADLANDS

FINDING YOU A HOME SINCE 1972