



28 Wheatlands Road, Harrogate

Harrogate

Guide Price £1,495,000



MYRINGS



28 Wheatlands Road

Harrogate, Harrogate

Stone Croft is a stunning 5 bedroom detached period residence dating back to circa 1890 which has been meticulously renovated and tastefully modernised in recent years over three floors retaining many original features and breath taking interiors for todays modern family. Offering flexible accommodation for multi generational living located just a stone's throw from the Stray parkland, M&S Food and Harrogate's town centre. This amazing town centre home stands in corner plot landscaped south facing gardens with a secure gated courtyard parking and garaging.

Council Tax band: G

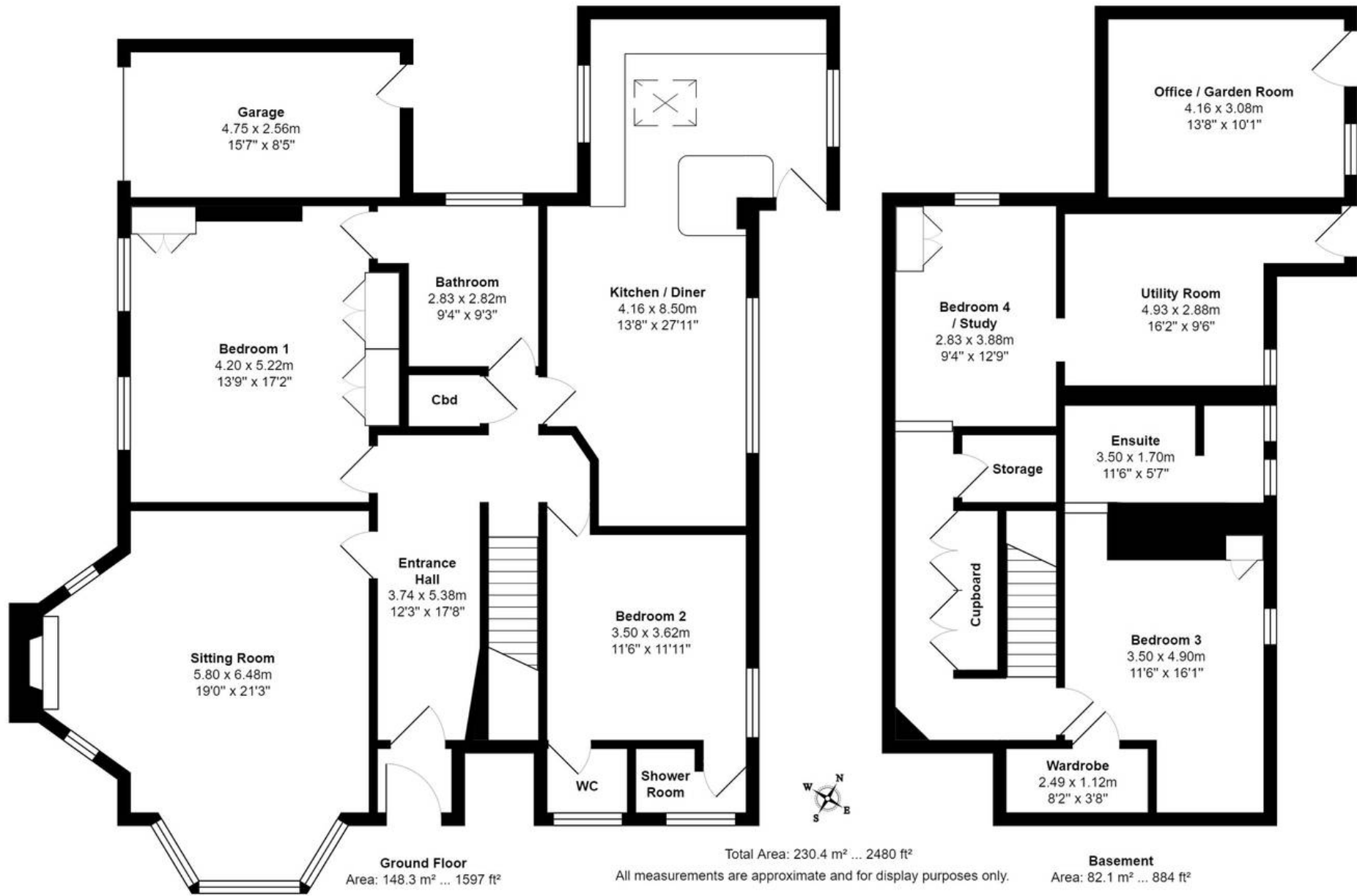
Tenure: Freehold

- FAVOURED SOUTH SIDE OF HARROGATE
- STUNNING INTERIORS
- LANDSCAPED SOUTH FACING CORNER PLOT GARDENS
- PRIVATE SECURE GATED COURTYARD PARKING AND GARAGING
- CLOSE TO STRAY PARKLAND & M&S FOOD
- PERIOD FEATURES
- FLEXIBLE ACCOMMODATION FOR MULTI GENERATIONAL LIVING
- OVER 4000 SQ FT OF ACCOMMODATION

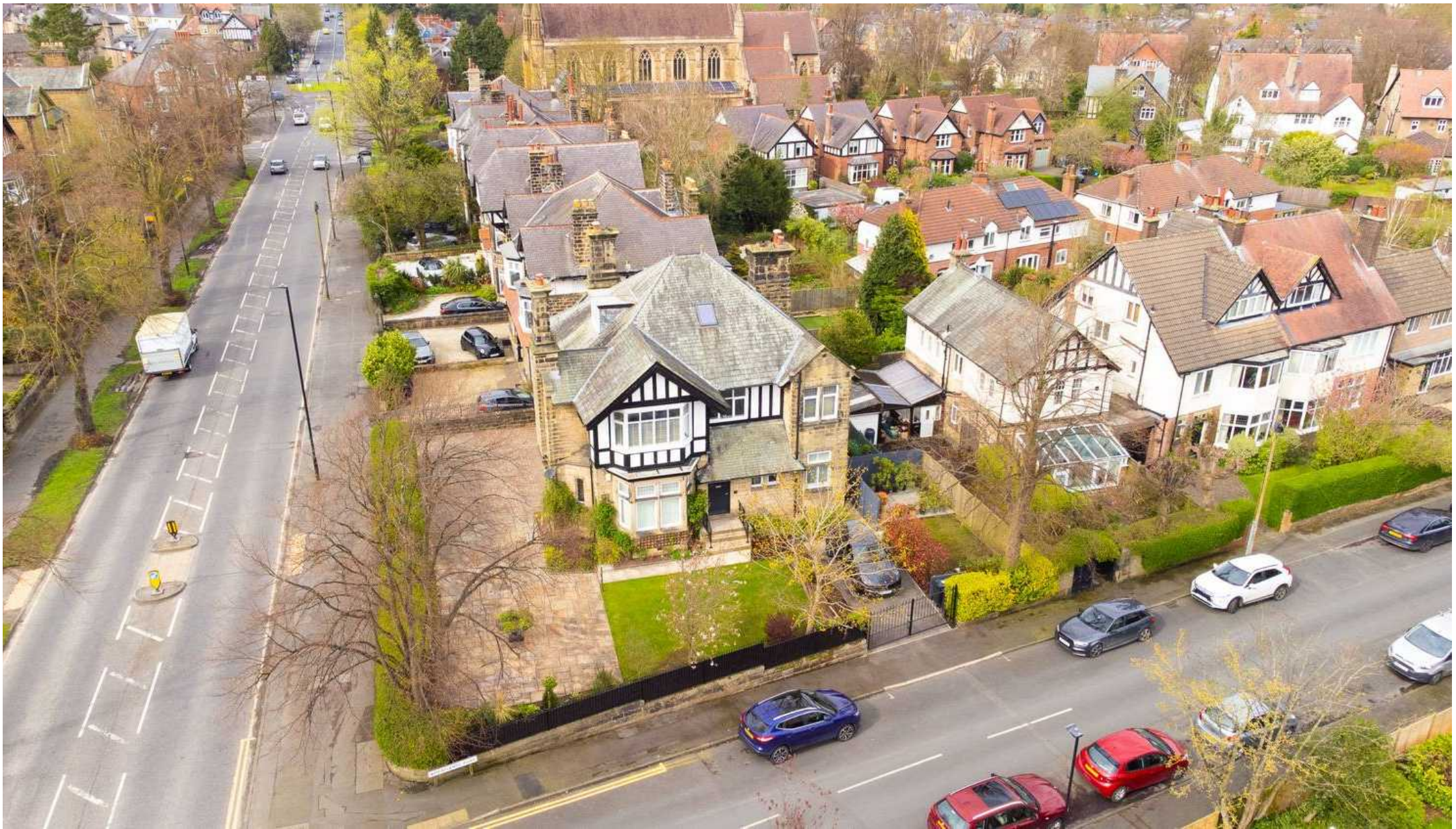


MYRINGS









Myrings Estate Agents

Myrings Estate Agents Ltd, 10 Princes Square - HG1 1LX

01423

566400

▪ enquiries@myringsestateagents.com ▪ <http://myringsestateagents.com/>

