



27 Luther Close, Edgware, HA8 8YY

Asking Price £350,000

A Ground Floor Maisonette in this popular Edgware location.

Accommodation comprises Two Bedrooms, a lounge, separate kitchen and family bathroom.

Features a private garden.

184 Years remaining on Lease. No service charges, No ground rent.

PLANNING PERMISSION HAS BEEN GRANTED FOR A REAR EXTENSION.

Call Benjamin Stevens for a viewing!

Exterior



Reception 13'8" x 9'10" (4.17 x 3.00)



Bedroom One 13'11" x 9'8" (4.26 x 2.97)



Kitchen 10'0" x 6'10" (3.07 x 2.09)



Bedroom Two 10'7" x 6'5" (3.25 x 1.96)



Family Bathroom



Garden



Tenure

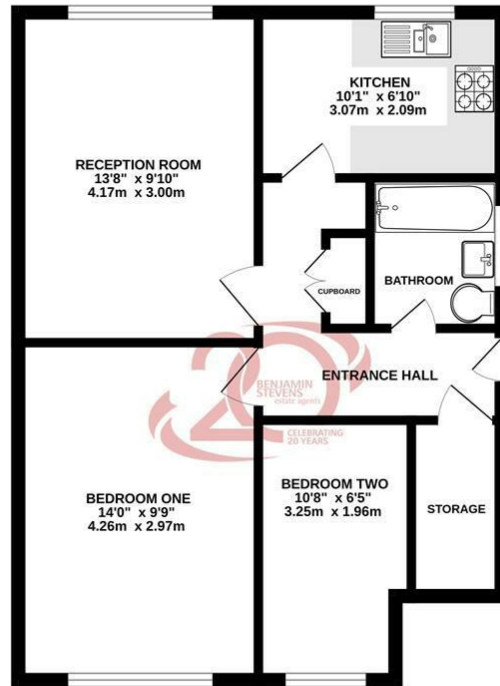
Lease- 184 Years

NO GROUND RENT

NO SERVICE CHARGE

Floor Plan

GROUND FLOOR
538 sq.ft. (50.0 sq.m.) approx.

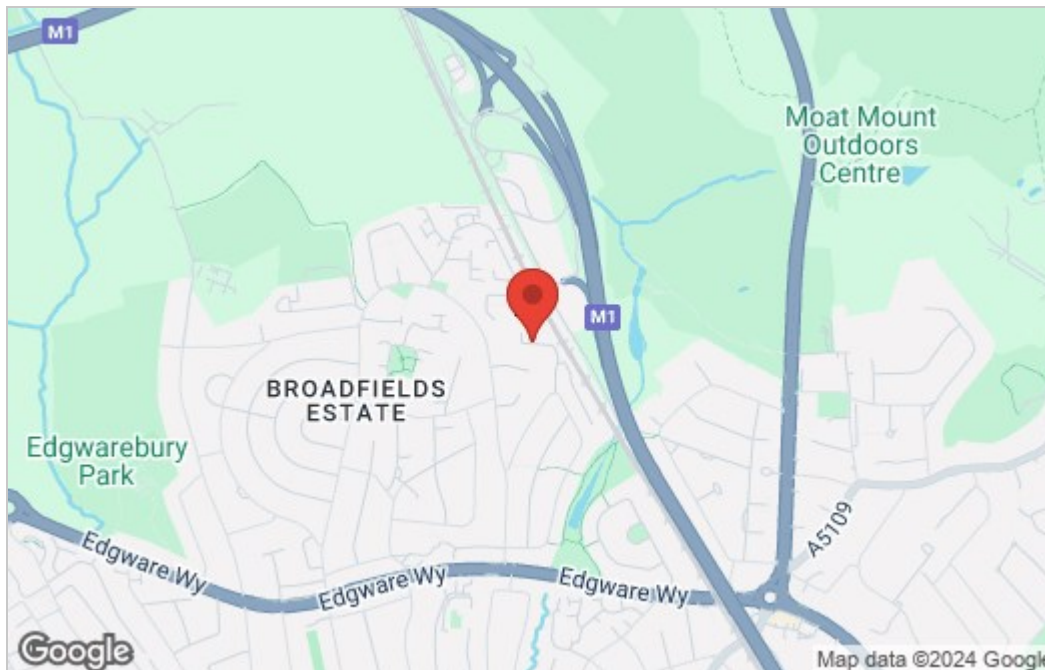


GROUND FLOOR MAISONETTE

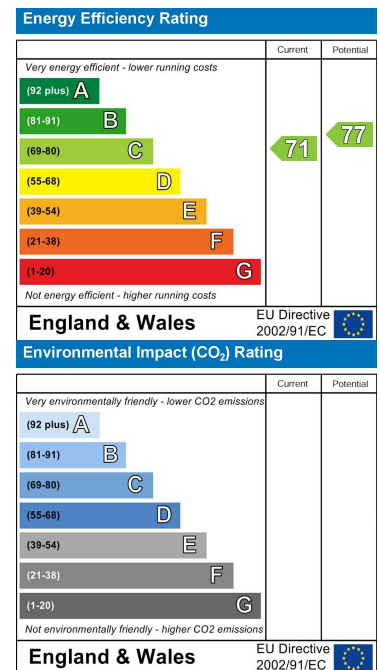
TOTAL FLOOR AREA: 538 sq.ft. (50.0 sq.m.) approx.

While every attempt has been made to ensure the accuracy of the description contained herein, measurements of doors, windows, rooms and any other items are approximate and no responsibility is taken for any error, omission or mis-statement. This plan is for illustrative purposes only and should be used as such by any prospective purchaser. The services, systems and appliances shown have not been tested and no guarantee is given as to their operability or efficiency can be given.
Made with Metropax ©2024

Area Map



Energy Efficiency Graph



These particulars, whilst believed to be accurate are set out as a general outline only for guidance and do not constitute any part of an offer or contract. Intending purchasers should not rely on them as statements of representation of fact, but must satisfy themselves by inspection or otherwise as to their accuracy. No person in this firm's employment has the authority to make or give any representation or warranty in respect of the property.



Edgware Office- 194 Station Road, Edgware, HA8 7AT. Tel: 020 8958 1118
 Bushey Heath Office- 59 High Road, Bushey, WD23 1EE. Tel: 020 8950 7777
www.benjaminstevens.co.uk