



# The Elder

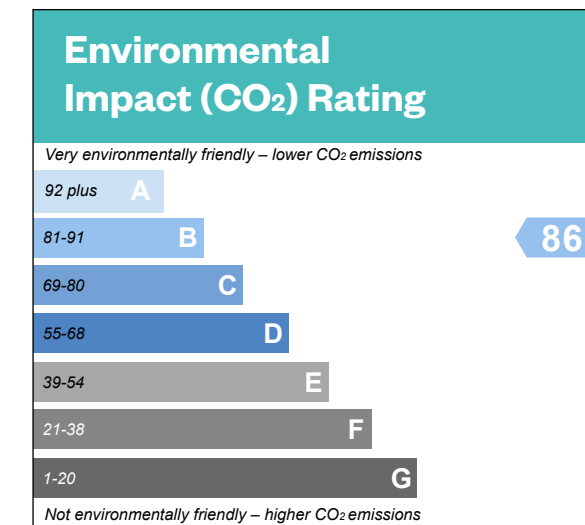
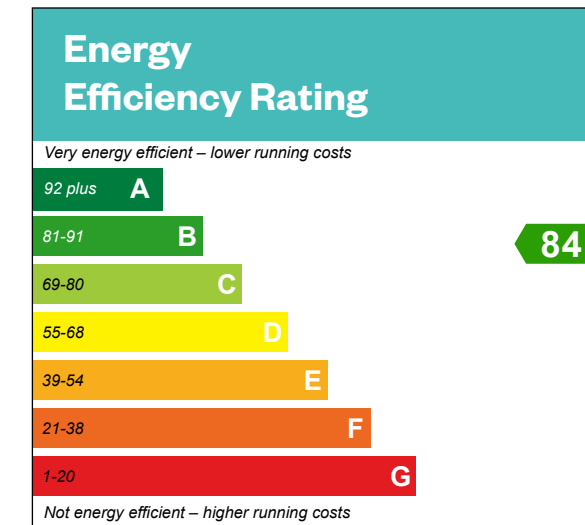
3 bedroom semi-detached  
and detached home



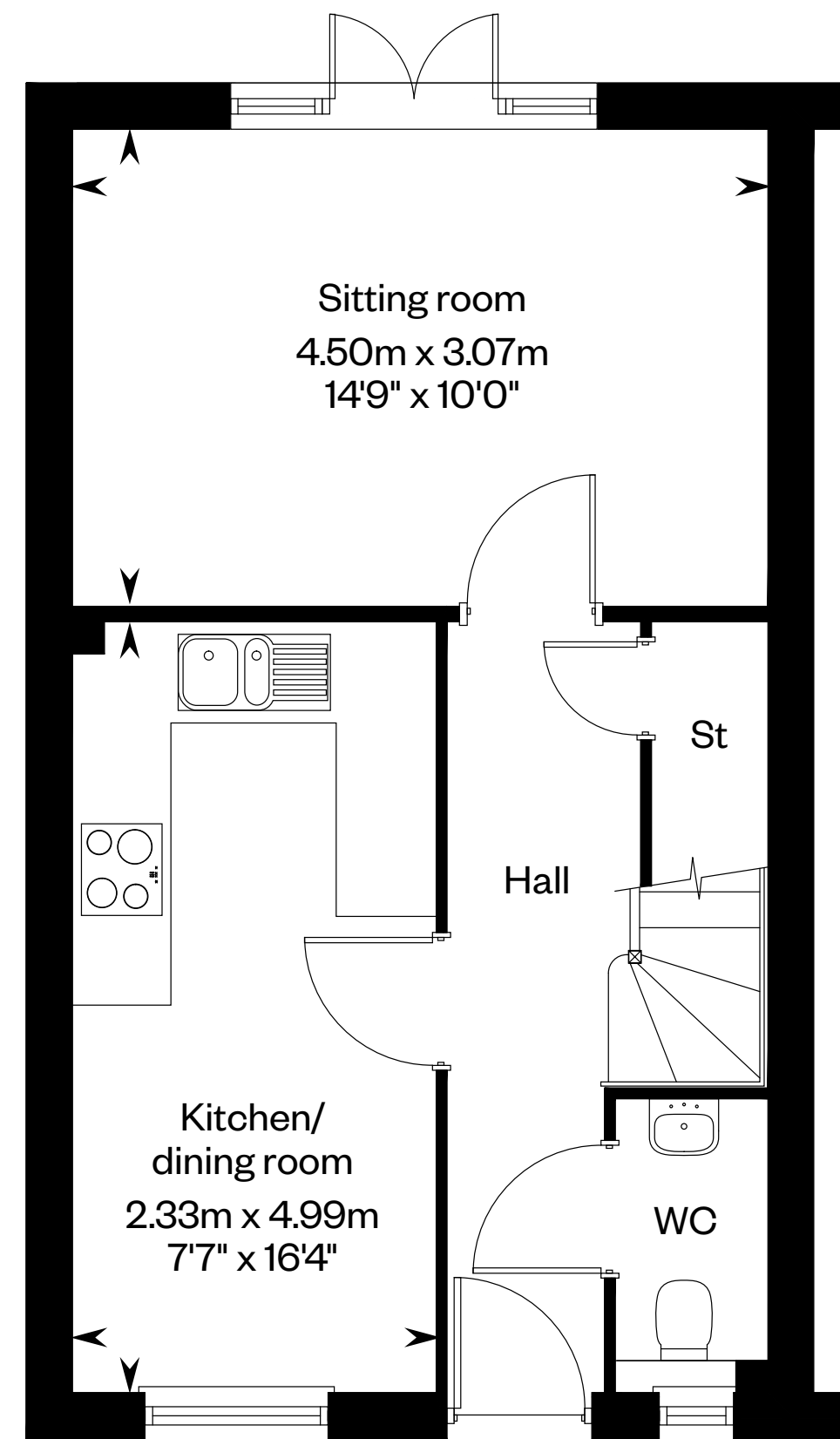
# The Elder

Plots 200, 202, 219, 234, 235, 237, 297\*,  
354, 356 & 364 – as shown

Plots 199, 201, 218, 233, 236, 238, 298\*,  
355, 357 & 365 – handed

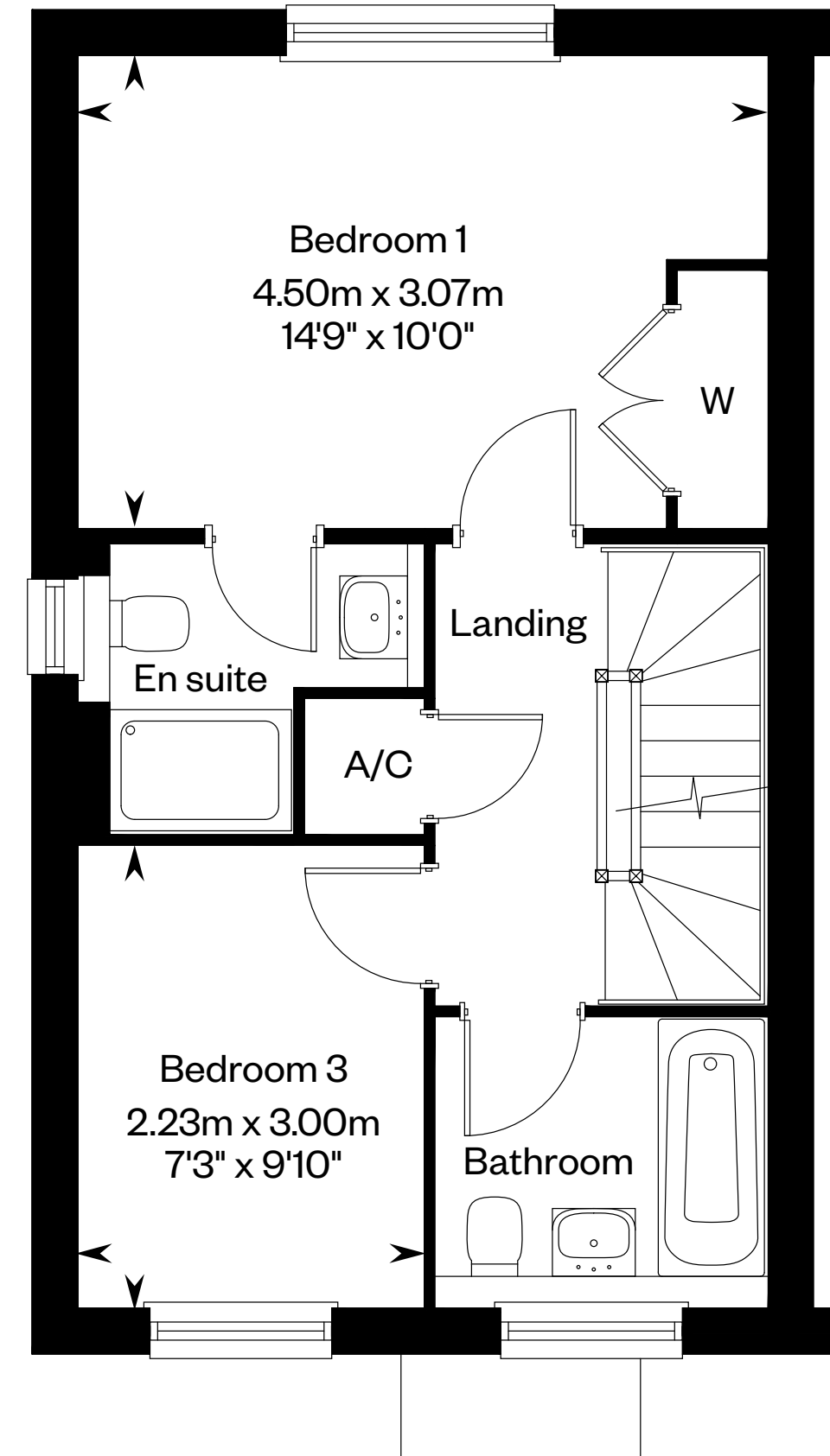


Windows to  
Plots 234 & 235 only

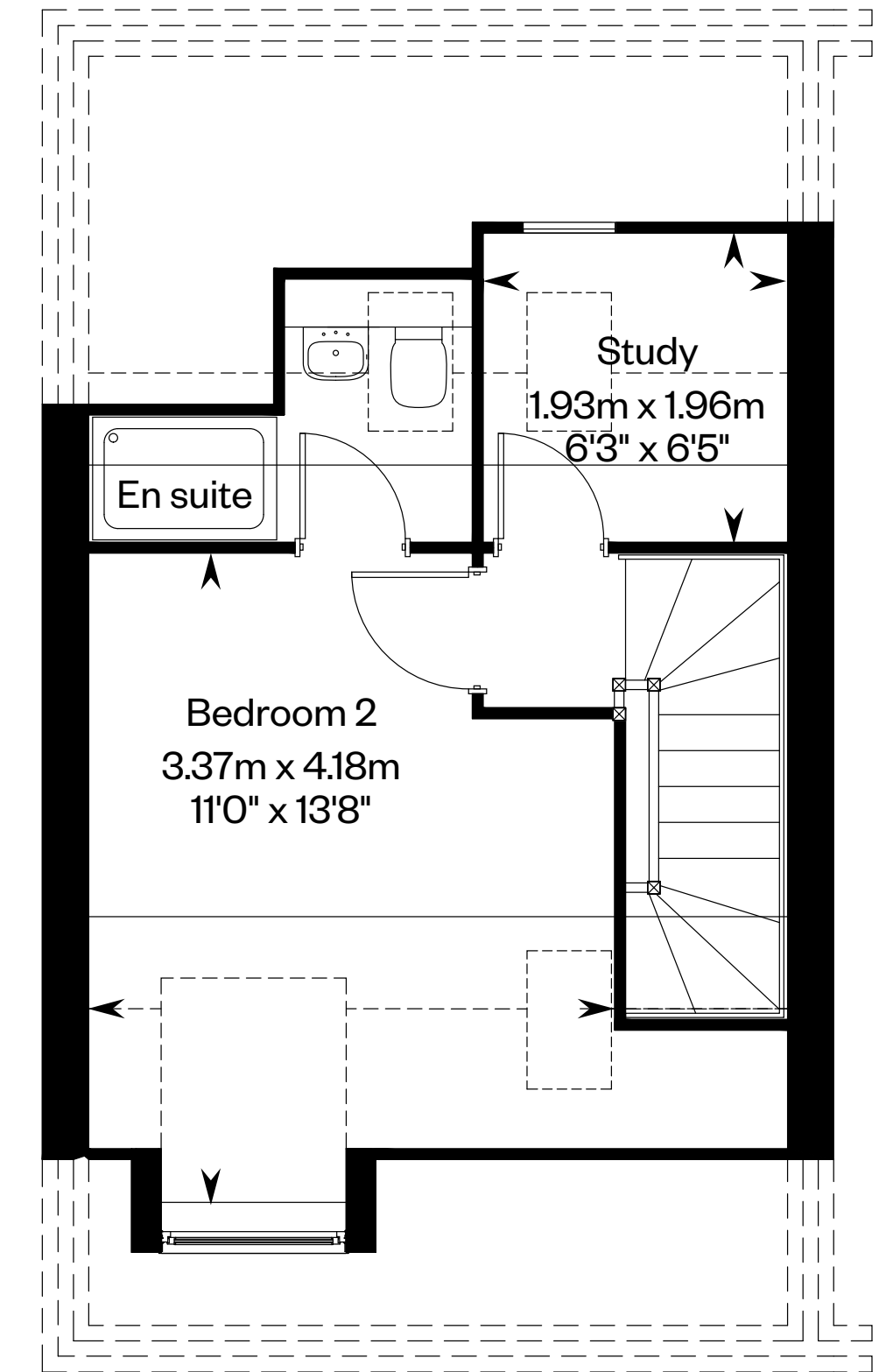


Ground floor

Windows to  
Plots 234 & 235 only



First floor



Second floor

\* Plots 297 & 298 are detached homes. Please ask your Sales Consultant for further details. A/C: Airing cupboard. St: Store cupboard. W: Wardrobe.

IMPORTANT NOTICE TO CUSTOMERS: The Consumer Protection from Unfair Trading Regulations 2008. Cala Homes (Cotswolds) Limited operates a policy of continual product development and the specifications outlined in this brochure are indicative only. The computer generated images and photographs do not necessarily represent the actual finishings/elevation or treatments, landscaping, furnishings and fittings at this development. Information contained is accurate at date of publication on OCT2023. See the main brochure for the full Consumer Protection statement. This is a Predicted Energy Assessment for properties that are incomplete. Once the property is completed, this rating will be updated and an official Energy Performance Certificate will be created for the property.