



7 Chilmington Avenue, Chilmington Green  
£385,000

Skippers



## 7 Chilmington Avenue

Chilmington Green, Ashford

This beautifully presented three-bedroom townhouse is situated at the recently built Chilmington Gate development, on the outskirts of Ashford and enjoys spacious accommodation extending to around 1300 sqft.

Council Tax band: D

Tenure: Freehold

- Three bedroom townhouse
- Impressive master bedroom suite with en-suite bathroom
- Allocated parking to the rear for 2 cars
- Walking distance of Chilmington Green Primary School
- Remainder of 10 year Build-Zone warranty
- Within easy reach of Ashford



### Entrance Hall

Composite door to the front, stairs to the first floor, radiator, laminate wood flooring.

### WC

Window to the front, WC, wash basin, radiator, laminate wood flooring.

### Kitchen

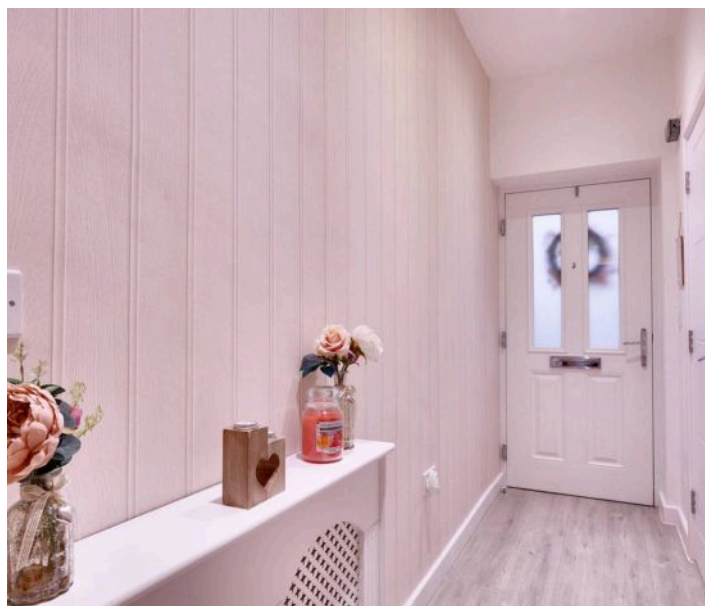
13' 3" x 6' 2" (4.05m x 1.89m)

Modern fitted kitchen comprising matching wall and base units with worksurfaces over, inset sink, built-in electric eye-level oven, 4-zone induction hob with extractor good above, dishwasher, washing machine and dishwasher. Window to the front, vinyl flooring.

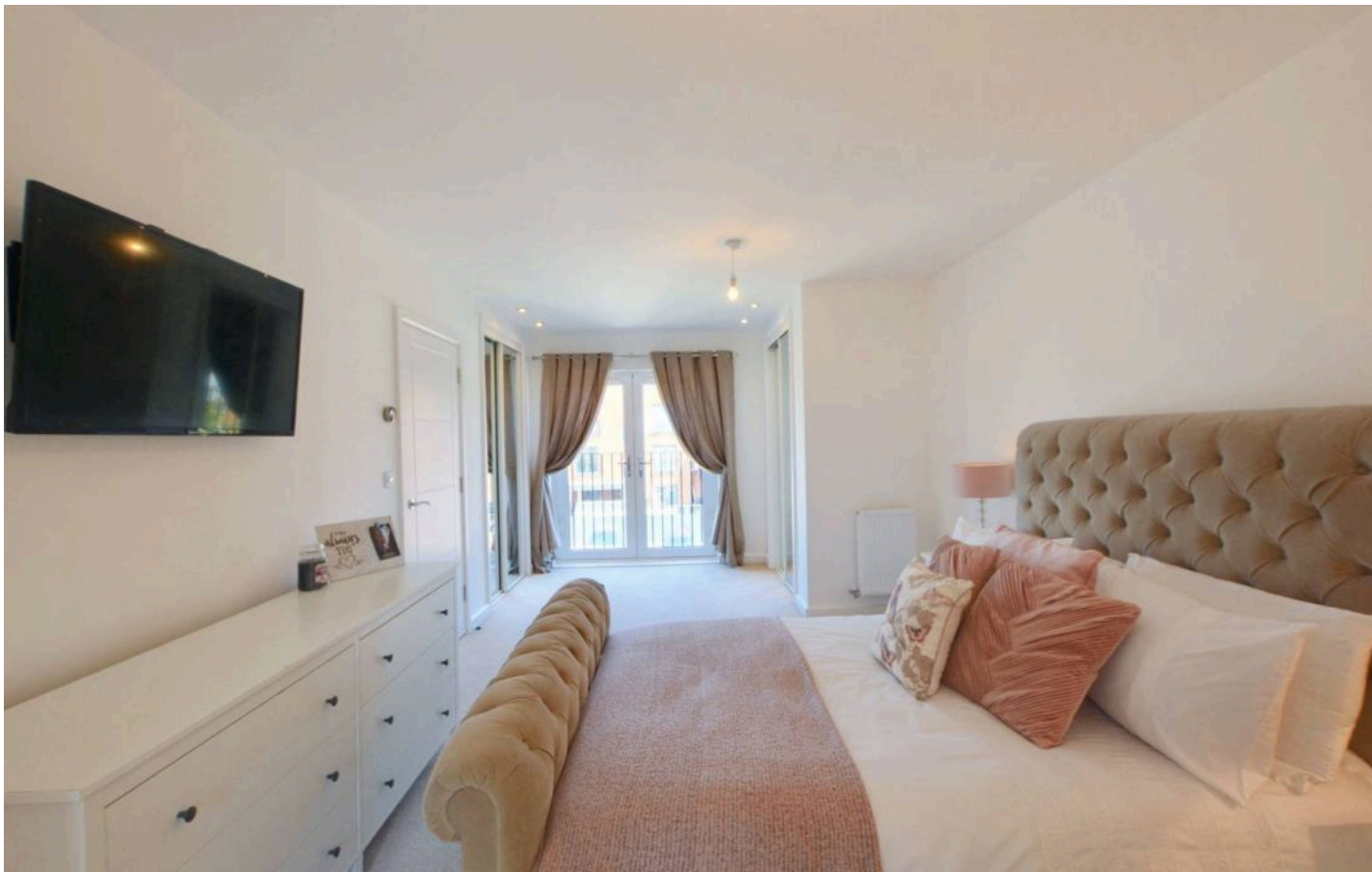
### Lounge/Dining Room

21' 0" x 14' 8" (6.39m x 4.47m)

Windows and doors to the rear opening to the garden, under-stairs cupboard, radiators, laminate wood flooring. Open to the kitchen.







### **First floor landing**

Doors to each room, radiator, stairs to the second floor, carpet laid to the stairs and landing.

### **Bedroom 2**

9' 3" x 14' 8" (2.83m x 4.47m)

Window to the front, radiator, fitted carpet.

### **Bedroom 3**

8' 3" x 14' 8" (2.51m x 4.47m)

Window to the front, radiator, fitted carpet.

### **Bathroom**

Comprising a four-piece suite, including a walk-in shower cubicle with thermostatic shower, bath with mixer taps, WC, wash basin, towel radiator, mostly tiled walls and tiled flooring.

### **Second floor**

Door into bedroom, carpet fitted to the stairs and landing.

### **Bedroom 1**

22' 0" x 11' 7" (6.71m x 3.53m)

Occupying the top floor, with Juliet balcony to the rear, fitted wardrobes, radiator and fitted carpet.

### **En-suite bathroom**

Comprising a four-piece suite including a walk-in shower with thermostatic shower, bath with mixer taps, WC, was basin, towel radiator, partly tiled walls and tiled flooring. Window to the front.



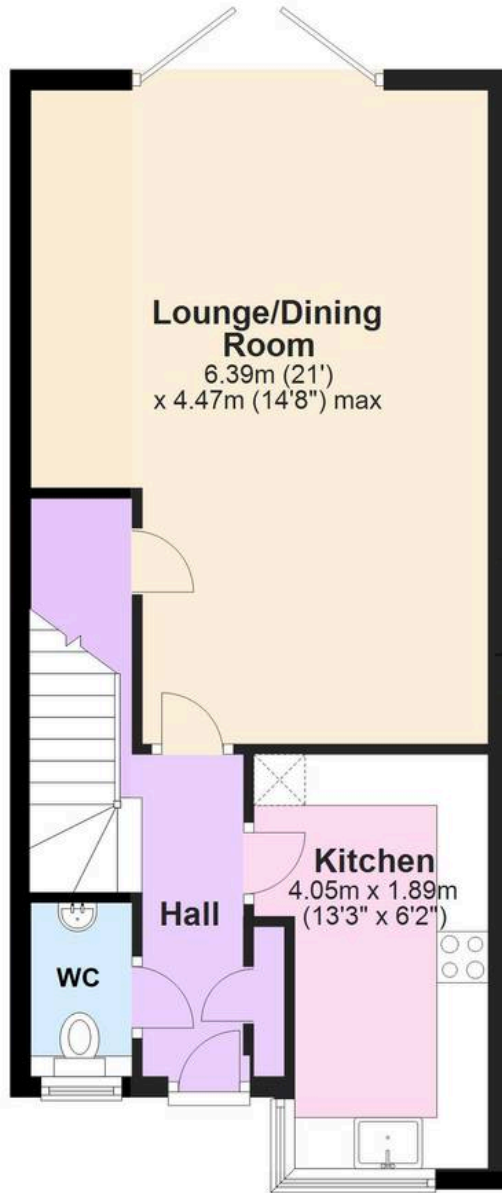






## Ground Floor

Approx. 44.7 sq. metres (481.0 sq. feet)



## First Floor

Approx. 38.1 sq. metres (409.9 sq. feet)



## Second Floor

Approx. 37.8 sq. metres (407.4 sq. feet)



Total area: approx. 120.6 sq. metres (1298.3 sq. feet)

Plans are for layout purposes only and not drawn to scale, with any doors, windows and other internal features merely intended as a guide.  
Plan produced using PlanUp.





## Skippers Estate Agents – Ashford

5 Kings Parade High Street, Ashford – TN24 8TA

01233 632383

[ashford@skippers-ea.co.uk](mailto:ashford@skippers-ea.co.uk)

[skippers-ea.co.uk](http://skippers-ea.co.uk)





