



66 Irwell Estate Neptune Street, London  
London

£400,000

OLIVER *OJ* JAQUES  
EST. 1986

# 66 Irwell Estate Neptune Street

London, London

Conveniently located less than a five minute walk from both Rotherhithe and Canada Water stations, this 1930s period duplex-apartment offers spacious...

Council Tax band: C

Tenure: Leasehold

EPC Energy Efficiency Rating: C

EPC Environmental Impact Rating:

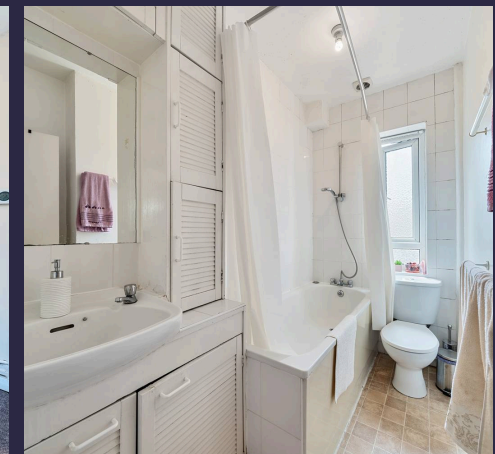
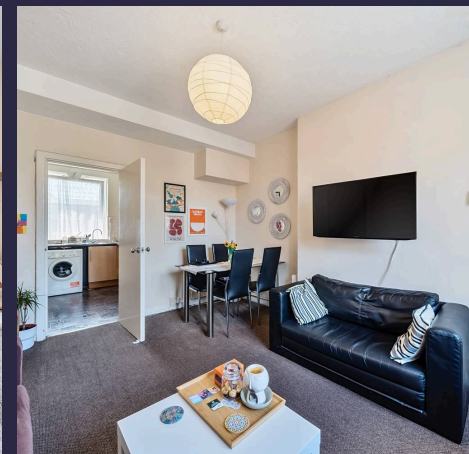
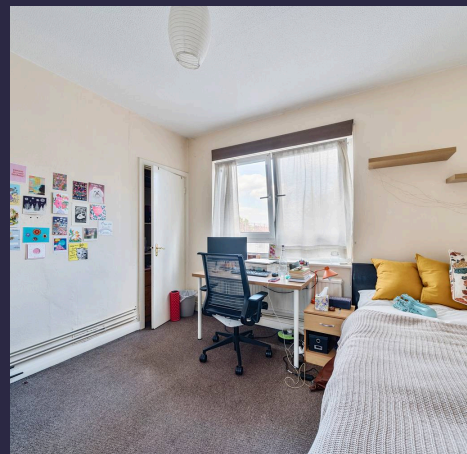
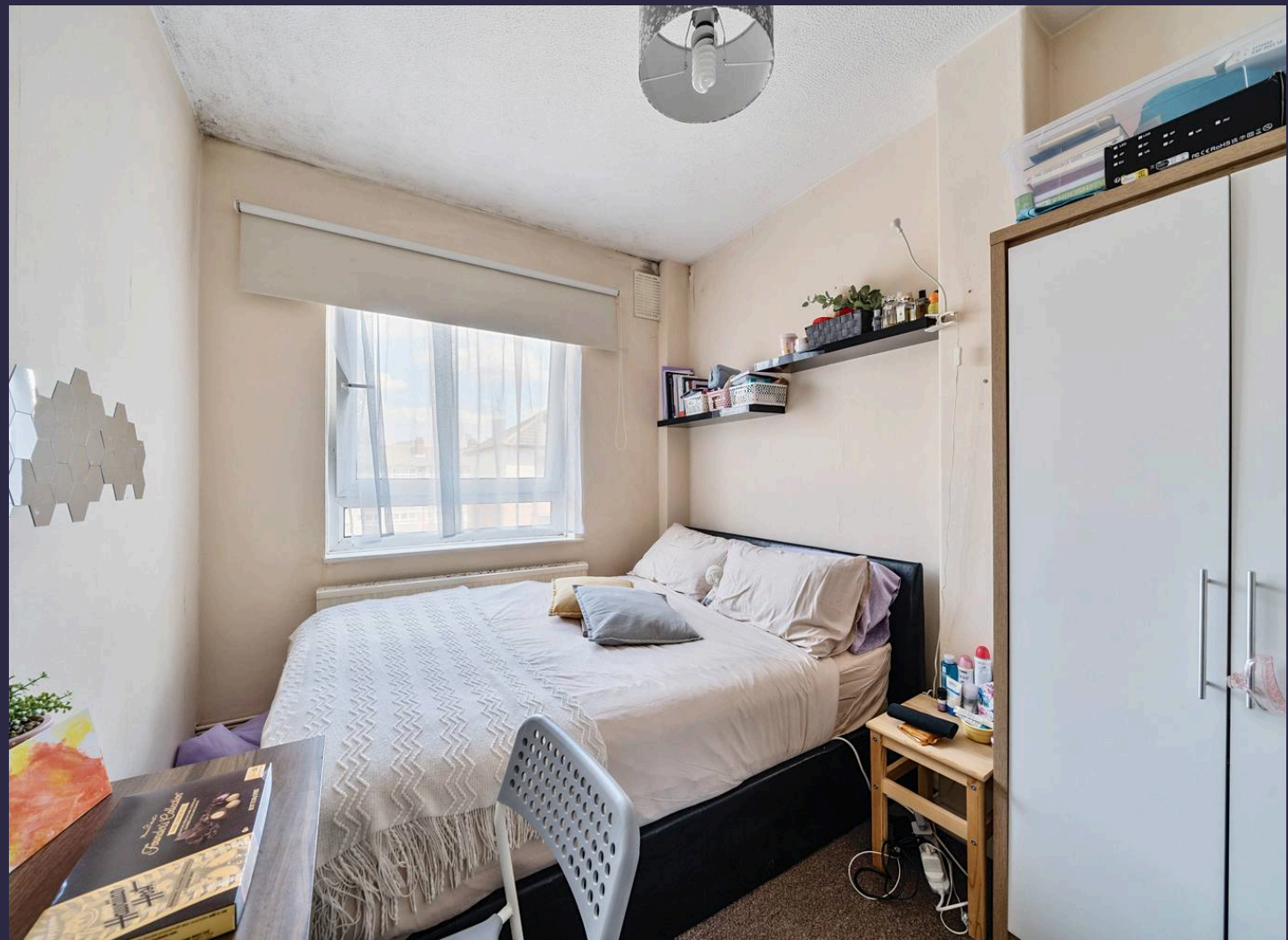
- Three Bedroom Duplex
- Canada Water, SE16
- Fully Double Glazed
- Close To Stations
- Contemporary Kitchen

Tenure - Leasehold

Lease Expiry - 30/10/2133

Ground Rent - N/A

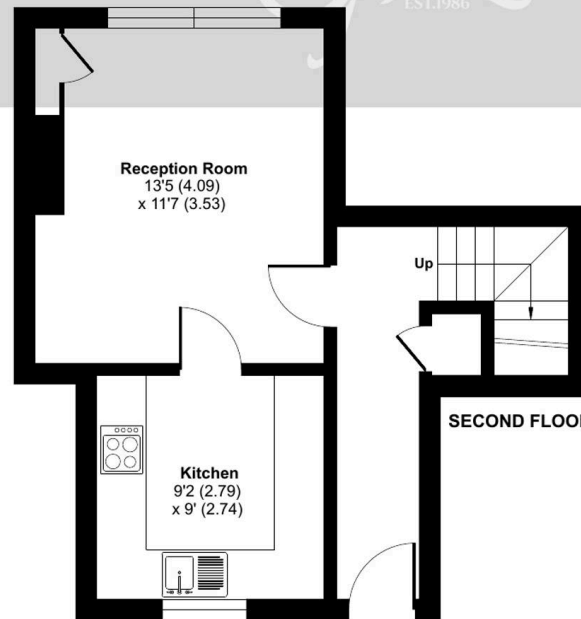
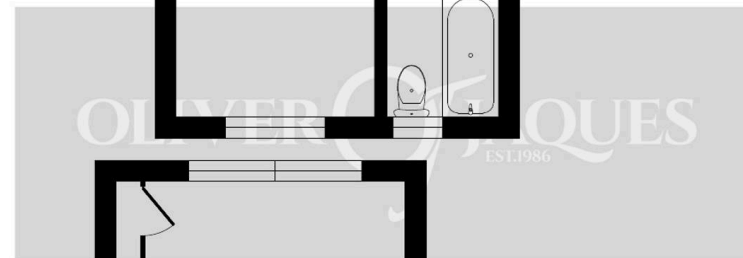
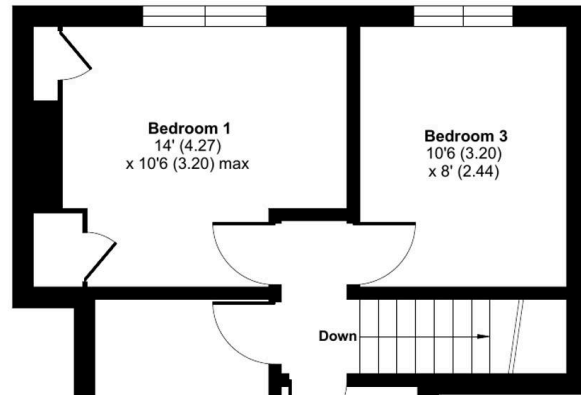
Service Charge - £1,400 per year



# Irwell Estate, Neptune Street, London, SE16

Approximate Area = 747 sq ft / 69.3 sq m

For identification only - Not to scale



Floor plan produced in accordance with RICS Property Measurement Standards incorporating International Property Measurement Standards (IPMS2 Residential). © n7chem 2024. Produced for Oliver Jaques. REF: 1145526



## Oliver Jaques

Oliver Jaques, 229-231 Lower Road - SE16 2LW

02072315050 • southeast@o-j.co.uk • o-j.co.uk/

Every care has been taken with the preparation of this brochure but it is for general guidance and complete accuracy can't be guaranteed. Prospective purchasers should seek clarification from their solicitor. The mention of any appliances fixtures or fittings does not imply they are in working order.