

The Old School House

School Lane, Henbury

A stunning 5-bed detached house near Alderley Edge & Knutsford. Original features & modern amenities over 3000 sqft. Grand lounge, open plan kitchen/diner, versatile bedrooms, gym, and lush gardens on an acre plot. Peaceful rural retreat with gated parking, garage. Close to top schools & amenities. Perfect family home.

Council Tax band: G

Tenure: Freehold

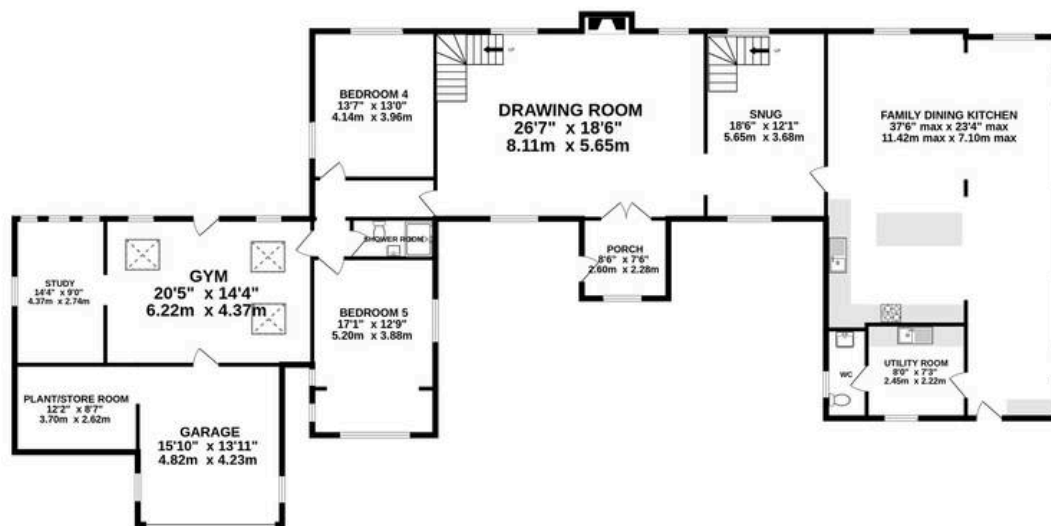
EPC Energy Efficiency Rating: E

EPC Environmental Impact Rating: F

- A beautifully extended and refurbished detached period home
- Extensive and versatile accommodation stretching more than 3800 square feet
- Attractive original features and a wealth of character
- Stunning open plan living/kitchen/diner with doors out into the gardens
- Versatile bedroomming, including 5 double bedrooms and four bathrooms
- Superb plot stretching to more than 0.8 acres
- Rural feeling setting, just a short journey from Alderley Edge, Knutsford and many sought-after schools



GROUND FLOOR
2873 sq.ft. (266.9 sq.m.) approx.



1ST FLOOR
963 sq.ft. (89.5 sq.m.) approx.



TOTAL FLOOR AREA : 3836 sq.ft. (356.4 sq.m.) approx.

Whilst every attempt has been made to ensure the accuracy of the floorplan contained here, measurements of doors, windows, rooms and any other items are approximate and no responsibility is taken for any error, omission or mis-statement. This plan is for illustrative purposes only and should be used as such by any prospective purchaser. The services, systems and appliances shown have not been tested and no guarantee as to their operability or efficiency can be given.

Made with Metropix ©2024



Stuart Rushton & Company

Stuart Rushton & Co, 35 King Street – WA16 6DW

01565 757000

enquiries@srushton.co.uk

www.srushton.co.uk



We are not authorised to make or give any representations or warranties in relation to the property either here or elsewhere. We assume no responsibility for any statement that may be made in these particulars, and they do not form part of any offer or contract and must not be relied upon as statements or representation of fact. Any areas, measurements or distances are approximate. The text, photographs and plans are for guidance only. Importantly, it should not be assumed that the property has all necessary planning, building regulations or other consents and we have not tested any services, equipment or facilities. Purchasers must satisfy themselves by inspection or otherwise.