



# WILLIFIELD WAY

HAMPSTEAD GARDEN SUBURB,  
NW11



# WILLIFIELD WAY

HAMPSTEAD GARDEN SUBURB, NW11

A wonderful detached house, surrounded by beautifully landscaped and secluded gardens, and situated in an elevated position at the heart of Hamstead Garden Suburb.

The house has a Tudor style frontage, is arranged over two floors, and is full of charm and individual character. This lovely home is superbly presented with generous reception rooms, a country-style kitchen, and excellent bedroom accommodation on the first floor. The outstanding sunny gardens have been carefully designed and landscaped and features a heated outdoor swimming pool with terracing, lawns and well established flower borders.

The house is set up from the road with a gated parking space to the side and is located just off Hampstead Way and within easy reach of Hampstead Heath Extension, Temple Fortune and the excellent transport facilities of Golders Green.








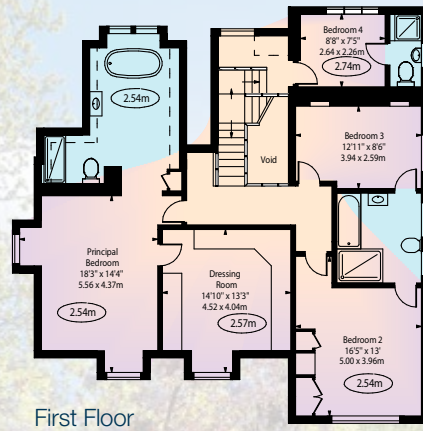


APPROXIMATE GROSS INTERNAL AREA  
292.09 SQ\_M (3,144 SQ\_FT)

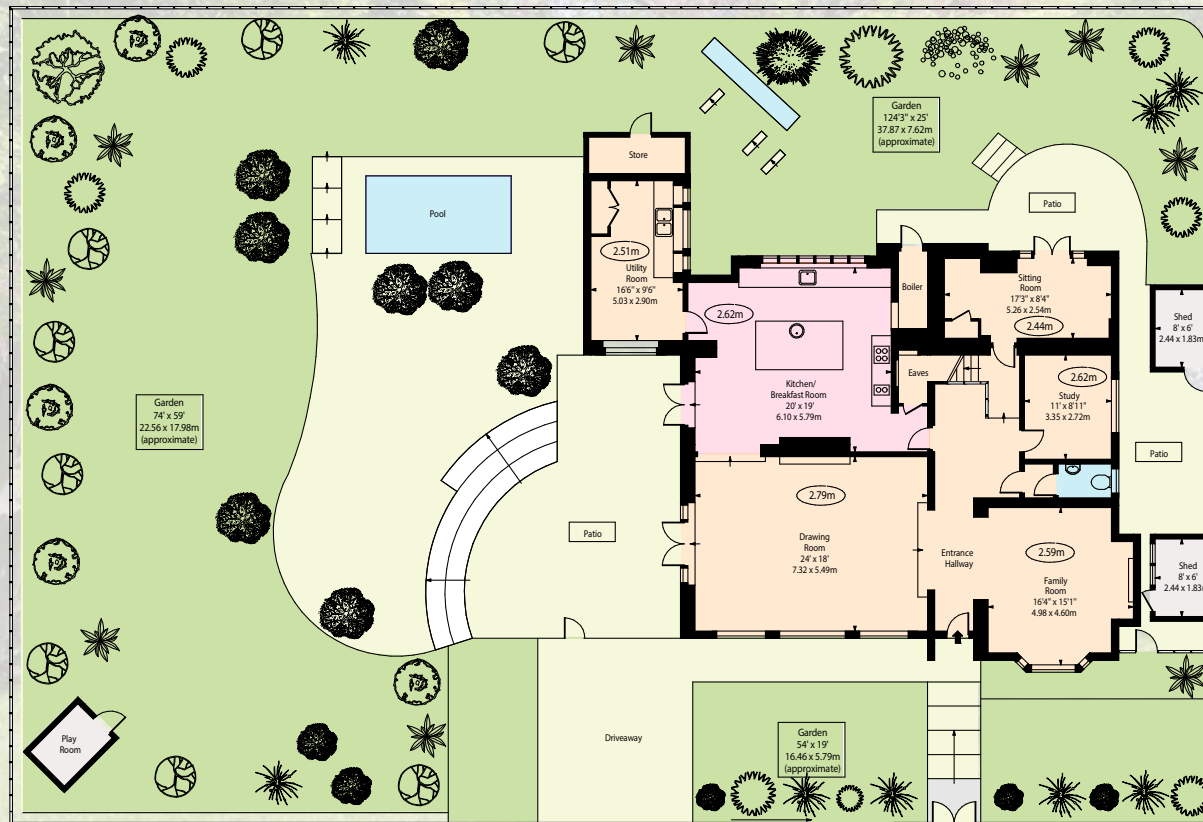
APPROXIMATE FLOOR AREA  
INCLUDING RESTRICTED HEIGHTS  
295.34 SQ\_M (3,179 SQ\_FT)



 - Ceiling Height



First Floor



Ground Floor

## ACCOMMODATION & AMENITIES

ENTRANCE HALL • FAMILY ROOM • DRAWING ROOM  
STUDY • SITTING ROOM • KITCHEN/ BREAKFAST ROOM  
PRINCIPAL BEDROOM WITH EN SUITE DRESSING ROOM  
AND BATHROOM • BEDROOMS 2 AND 3 WITH EN SUITE  
'JACK AND JILL' BATHROOM • BEDROOM 4 WITH EN  
SUITE SHOWER ROOM • BEAUTIFULLY LANDSCAPED AND  
SECLUDED GARDENS • OUTDOOR HEATED SWIMMING  
POOL • GATED DRIVEWAY PROVIDING OFF-STREET  
PARKING

PRICE ON APPLICATION

FREEHOLD

JOINT SOLE AGENTS

**MARCUS  
PARFITT**

RESIDENTIAL SALES & ACQUISITIONS

**020 7431 0000**

28 Church Row, Hampstead, London NW3 6UP  
email: [info@marcusparfitt.com](mailto:info@marcusparfitt.com) [www.marcusparfitt.com](http://www.marcusparfitt.com)

