



Flat 5, The Westbourne, 1 Artesian Road

London

£1,675,000



## Flat 5

The Westbourne, London

Luxurious 2 bed, 2 bath penthouse in vibrant Notting Hill. Stylish Art Deco block with double height ceilings, designer interior by House of Huga, air conditioning, private balconies with garden/city views, secure parking, and day porter. Convenient location near shops and amenities.

Council Tax band: G

Tenure: Leasehold

EPC Energy Efficiency Rating: B

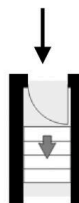
EPC Environmental Impact Rating: B



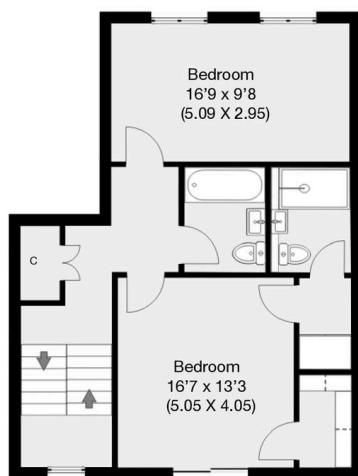


# The Westbourne, London, W2

Approximate Gross Internal Area 109 sqm / 1173 sqft  
(Excluding Loft Area 7 sq m / 75 sq ft)



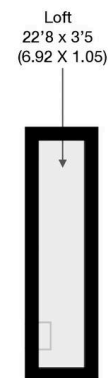
First Floor



Second Floor



Third Floor



Loft



## Garrison Estates

20 College Parade, Salusbury Road, Queens Park - NW6 6RN

020 4511 4820 • [contact@garrisonestates.co.uk](mailto:contact@garrisonestates.co.uk) • [www.garrisonestates.co.uk/](http://www.garrisonestates.co.uk/)