



**Morley Street, Atherton**

Manchester



In Excess of **£120,000**



# Morley Street

Atherton, Manchester

A SPACIOUS, two bedroom terraced property situated in a convenient location. Just a short walk from Atherton Town Centre, which is host to a range of pubs, shops and restaurants. Also benefits from close access to bus links into Manchester City Centre!

Council Tax band: A

Tenure: Leasehold

- Spacious, Two Bedroom Terraced Property
- Neutral Lounge with a Large Window Letting Plenty of Natural Light In
- Modern Kitchen Diner, Complete with Understairs Storage Space
- Two Generously-Sized Bedrooms, with the Second Bedroom Benefitting from a Vestibule that Comes Complete with Extra Storage Space
- Large, Three-Piece Bathroom
- Low-Maintenance Paved Yard to the Rear, with Access to a Brick-Built Outbuilding, Housing an Outside W/C and Storage
- Just a Short Walk from Atherton Two Centre, which is Host to a Range of Pubs, Shops and Restaurants
- Close to Transport Links into Manchester City Centre
- Great First Time Home or Investment - Viewing is HIGHLY Recommended!



HILLS



### **Porch**

### **Lounge**

14' 4" x 13' 3" (4.36m x 4.05m)

Featuring a central fireplace. Complete with a ceiling light point, double glazed window and wall mounted radiator. Fitted with carpet flooring.

### **Kitchen / Diner**

14' 3" x 11' 3" (4.35m x 3.43m)

Featuring complementary fitted units with integral hob and oven. Space for washer. Complete with a ceiling light point, two double glazed windows and wall mounted radiator. Fitted with cushioned flooring.

### **Landing**

Complete with a ceiling light point and carpet flooring.

### **Bedroom One**

14' 4" x 11' 0" (4.36m x 3.35m)

Complete with a ceiling light point, double glazed window and wall mounted radiator. Fitted with carpet flooring.

### **Bedroom Two**

11' 3" x 6' 11" (3.42m x 2.12m)

Complete with a ceiling light point, double glazed window and wall mounted radiator. Fitted with carpet flooring.

### **Bathroom**

11' 2" x 6' 11" (3.41m x 2.12m)

Featuring a three-piece suite including bath with shower over, hand wash basin and W.C. Complete with a ceiling light point, double glazed window and wall mounted radiator. Fitted with cushioned flooring.

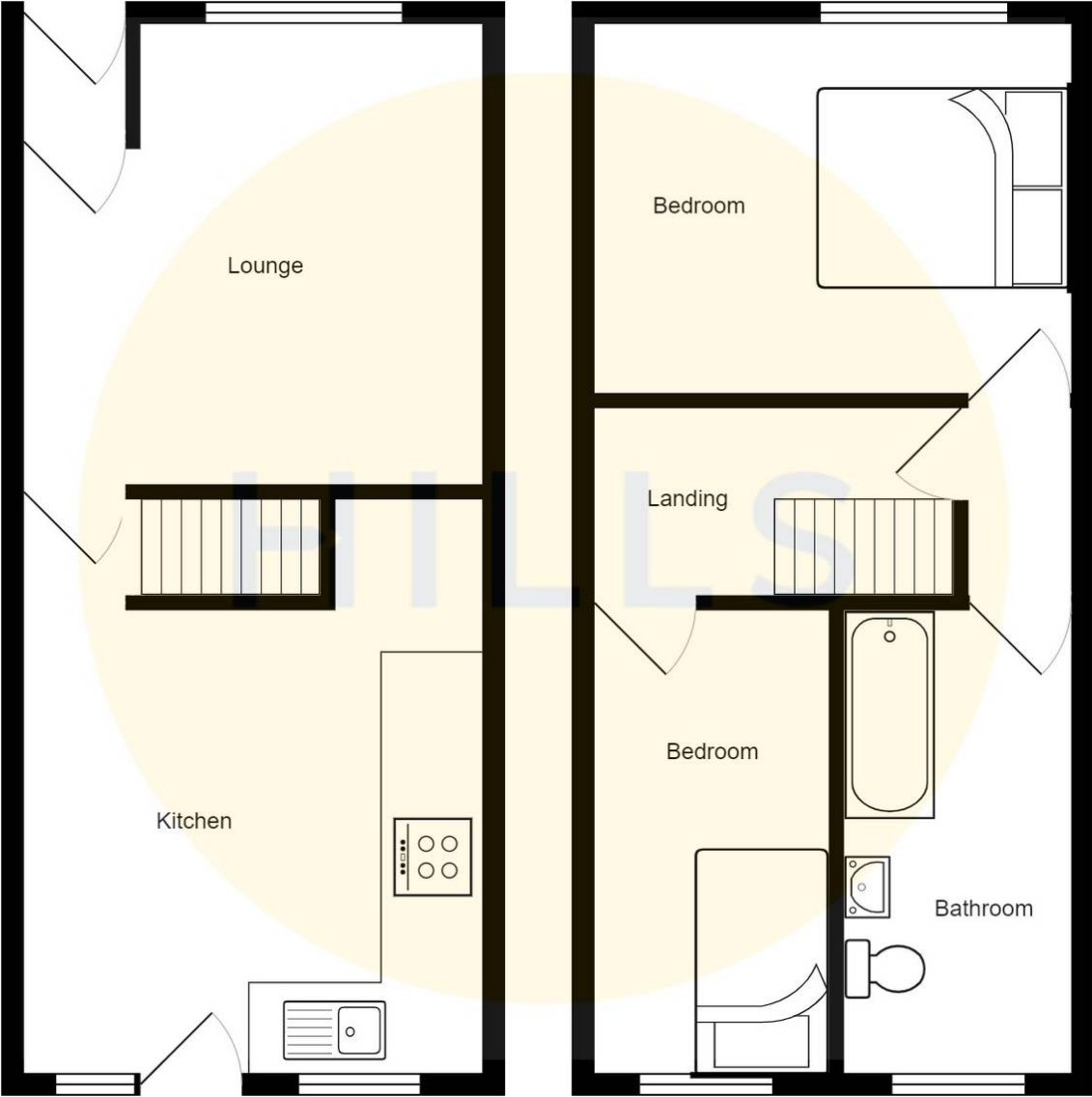
### **External**

To the rear of the property is a low maintenance paved courtyard with brick built outbuilding for storage.

### **Outside W.C.**

4' 0" x 2' 4" (1.23m x 0.71m)









HILLS

## Hills | Salfords Estate Agent

Hills Residential, Sentinel House Albert Street - M30 0SS

0161 707 4900

[sales@hills.agency](mailto:sales@hills.agency)

[www.hills.agency/](http://www.hills.agency/)



THE PROPERTY MISDESCRIPTIONS ACT 1991 The Agent has not tested any apparatus, equipment, fixtures and fittings or services and so cannot verify that they are in working order or fit for the purpose. A Buyer is advised to obtain verification from their Solicitor or Surveyor. References to the Tenure of a Property are based on information supplied by the Seller. The Agent has not had sight of the title documents. A Buyer is advised to obtain verification from their Solicitor. You are advised to check the availability of this property before travelling any distance to view. Every effort and precaution has been made to ensure these particulars are correct and not misleading but their accuracy is not guaranteed nor do they form part of any contract. If there is any point which is of particular importance to you, please contact us and we will provide any information you require. This is advisable, particularly if you intend to travel some distance to view the property. The mention of any appliances and services within these details does not imply that they are in full and efficient working order. These particulars are in draft form awaiting Vendors confirmation of their accuracy. These details must therefore be taken as a guide only.