



**125 Bishops Park, Mid Calder**

Mid Calder

Offers Over **£220,000**



## 125 Bishops Park

Mid Calder, Mid Calder

Welcome to 125 Bishops Park, an inviting and meticulously maintained three-bedroom semi-detached home in the charming village of Mid Calder. This property has been lovingly cared for by its current owners for 14 years and boasts numerous enhancements that make it move-in ready.

Upon entering, you're welcomed by a spacious ground floor with a warm, open layout. The large living room flows seamlessly into the upgraded kitchen and dining area, creating an ideal space for both everyday living and entertaining.

The ground level is fitted with real oak wood flooring, adding a touch of elegance and durability. The kitchen, upgraded just eight years ago, comes equipped with great storage solutions, and plenty of workspace, making it both functional and stylish.

Upstairs, the home offers three well-proportioned double bedrooms. Bedroom one and bedroom two each boast fitted wardrobes, maximizing storage and enhancing the rooms' functionality. The third bedroom can be a versatile space, as a further double bedroom, or would also be perfect for children, guests, or as a home office.



A family bathroom is also located on this level, complete with a bath and overhead shower, all presented in a clean, modern style.

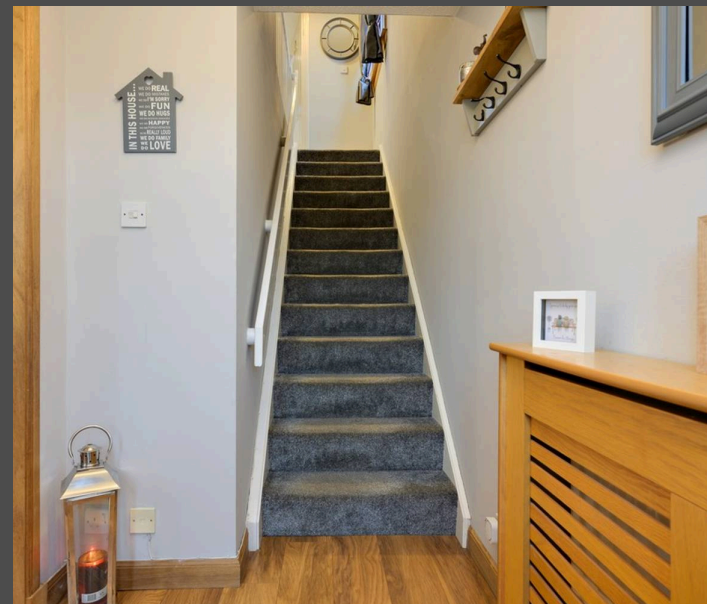
The exterior is impressive, with a driveway that accommodates 3-4 cars, ensuring ample parking for residents and guests alike.

To the rear, a spacious southwest-facing garden captures sunlight throughout the day, providing a perfect outdoor retreat for relaxing or entertaining. Additionally, a powered outhouse has been added, offering a flexible space that can serve as a workshop, home gym, or additional storage.

Mid Calder is a popular village known for its vibrant community and picturesque setting. This home is conveniently located within walking distance of the village centre, where you'll find a variety of amenities, including well-established pubs, reputable restaurants, and a hairdresser.

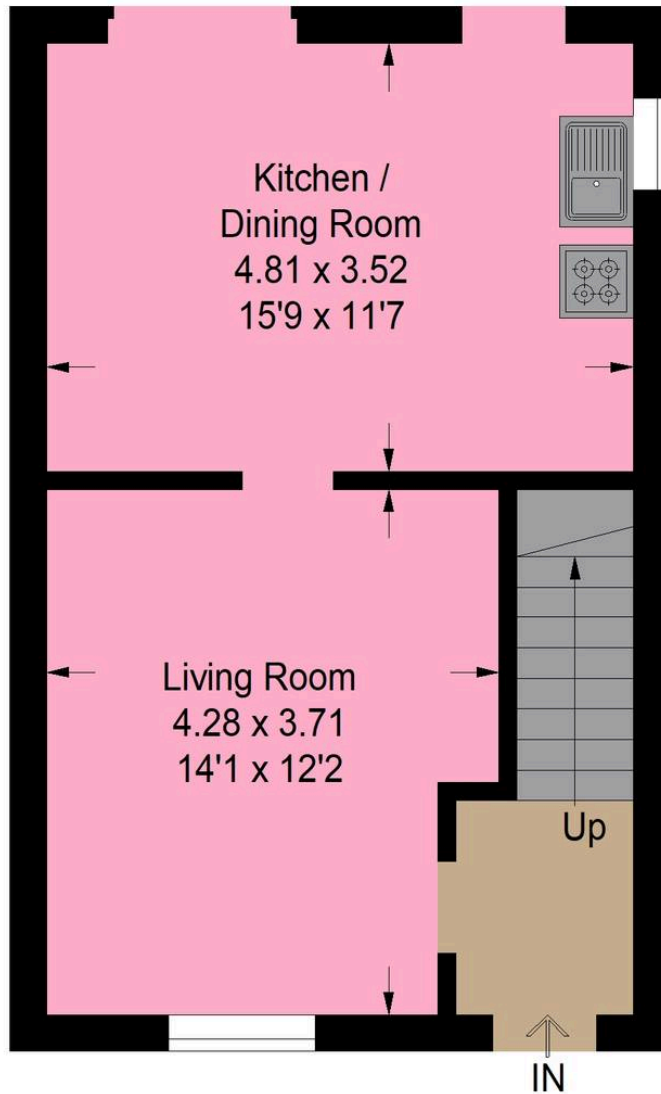
Nature enthusiasts will appreciate the close proximity to scenic walking trails like Sommers Park Trail, Almonddell Country Park, and a nearby local play park, ideal for family outings and outdoor adventures.

With its excellent location, thoughtful upgrades, and spacious layout, 125 Bishops Park is a fantastic opportunity for those seeking a well-appointed, move-in-ready home in a charming village setting.





Approximate Gross Internal Area = 76.6 sq m / 825 sq ft



Ground Floor

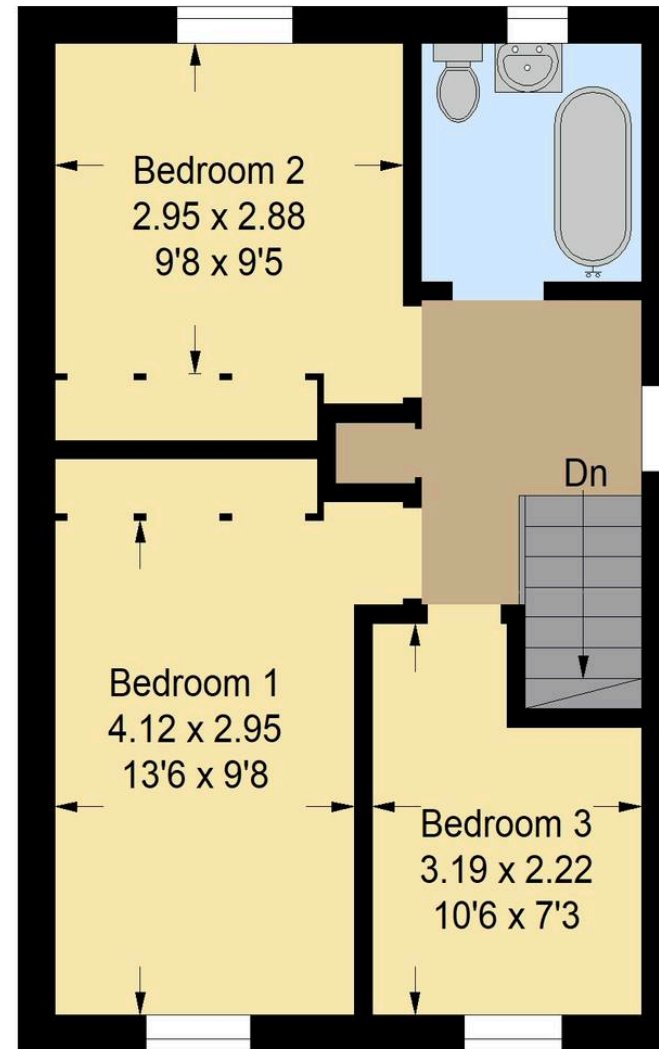


Illustration For Identification Purposes Only. Not To Scale (ID:1141805 / Ref:89541)



## Bridges Properties

94 West Main Street, Whitburn - EH47 0QU

01501519435

[info@bridges-properties.co.uk](mailto:info@bridges-properties.co.uk)

[www.bridges-properties.co.uk/](http://www.bridges-properties.co.uk/)

