



Bartlams.

21 Gordon Drive, Tipton - DY4 7LZ

In Excess of **£250,000**



21 Gordon Drive

Tipton, Dudley

*** IMPRESSIVE SEMI DETACHED FAMILY HOME ***
STUNNINGLY PRESENTED THROUGHOUT *** FULLY
REFURBISHED THROUGHOUT *** CORNER PLOT ***
NEW KITCHEN AND BATHROOM *** NO UPWARD
CHAIN ***

This is a spacious, stunningly presented three bedroom semi detached that has been refurbished throughout and is offered with no upward chain so must be viewed to be appreciated.

Located in the highly demanded area of Dudley Port with walking distance to local schools, shops, Dudley Port train station and easy access to motorway networks.

This immaculate family home offers; entrance hallway, lounge, stunning kitchen/diner with intergated appliances, three good sized bedrooms and a family bathroom. To the rear and side are private wrap around gardens and to the front is a tarmac driveway.

The property has recently been renovated throughout and boasts a new central heating system and complete rewiring.

Freehold. Council Tax Band - B. EPC - C



B.



21 Gordon Drive

Tipton, Tipton

Entrance Hallway

Lounge

10' 11" x 11' 4" (3.323m x 3.458m)

Kitchen/Diner

8' 9" x 17' 5" (2.657m x 5.300m)

First Floor Landing

Bedroom One

10' 10" x 11' 3" (3.309m x 3.434m)

Bedroom Two

11' 3" x 10' 1" (3.438m x 3.084m)

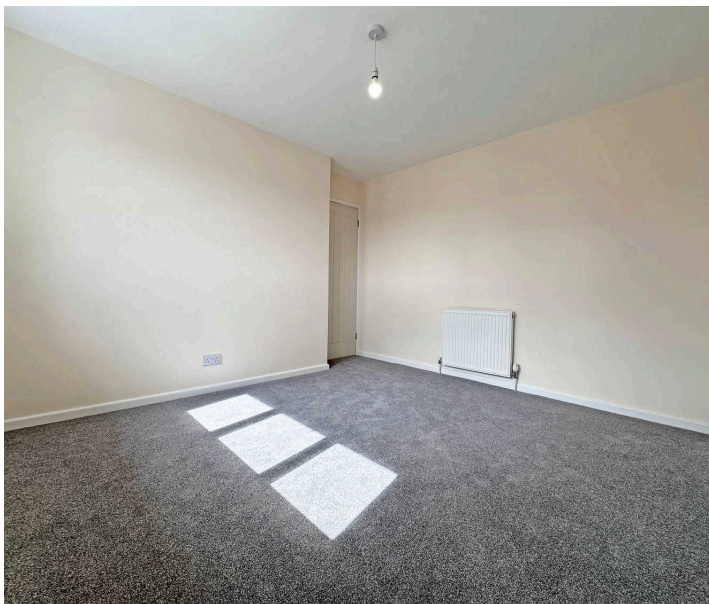
Bedroom Three

8' 3" x 7' 2" (2.504m x 2.182m)

Family Bathroom

5' 6" x 5' 11" (1.678m x 1.804m)

Detached Garage



B.





GROUND FLOOR



1ST FLOOR



Whilst every attempt has been made to ensure the accuracy of the floorplan contained here, measurements of doors, windows, rooms and any other items are approximate and no responsibility is taken for any error, omission or mis-statement. This plan is for illustrative purposes only and should be used as such by any prospective purchaser. The services, systems and appliances shown have not been tested and no guarantee as to their operability or efficiency can be given.
Made with Metropix ©2024

Bartlams

Bartlams Ltd, The House On The Green High Street - WV5 9DP

01902 894141

wombourne@bartlams.co.uk

www.bartlams.co.uk

NOTICE: These particulars, although believed to be correct, do not constitute any part of an offer or contract. All statements contained in these particulars as to this property are made without responsibility and are not to be relied upon as statements or representations of warranty whatsoever in relation to property. Any intending purchaser must satisfy themselves by inspection or otherwise as to the correctness each of the statements contained in these particulars. All measurements are approximate and for illustrative purposes only.

Photographs are produced for general information and it must not be inferred that any item shown is included in the sale. DISCLOSURE: As a professional Estate Agency our clients employ us to look after their best interests. This includes providing them with full details of offers made to purchase their property. To ensure our obligations to our clients are met we need to check the status of all potential purchasers. If you make an offer on this property we will ask a member of The Finance Family to contact you to verify your status. They are a leading firm of Independent Financial Advisers and Mortgage Brokers. Should they transact any business resulting from our introduction then we may receive a commission.

