



Flat 19, Bourns Court Ayshe Court Drive, Horsham

Guide Price £285,000

Bourns Court Ayshe Court Drive, Horsham

This two bedroom apartment offers generous proportions and is situated on the top floor providing stunning elevated views over Horsham town and the countryside beyond.

It is ideally located with access to Horsham mainline train station, the nearby town centre with local shops and amenities, Horsham park, countryside walks and a selection of well regarded local pubs and restaurants. It is also ideal for commuter routes to the capital and Gatwick Airport. The communal area offers lift access (and stairs) to this fourth floor apartment, the main living space is of generous proportions and is ideal for a sitting/dining room set up and there is a door to a private balcony. The kitchen has a range of wall and base cabinets with contrasting work surfaces and space for freestanding appliances. There are two generously proportioned bedrooms and a bathroom with a wall mounted shower over the bath, a low-level WC and wash hand basin - both within a vanity unit. The reception hallway also has ample storage and cupboard space.

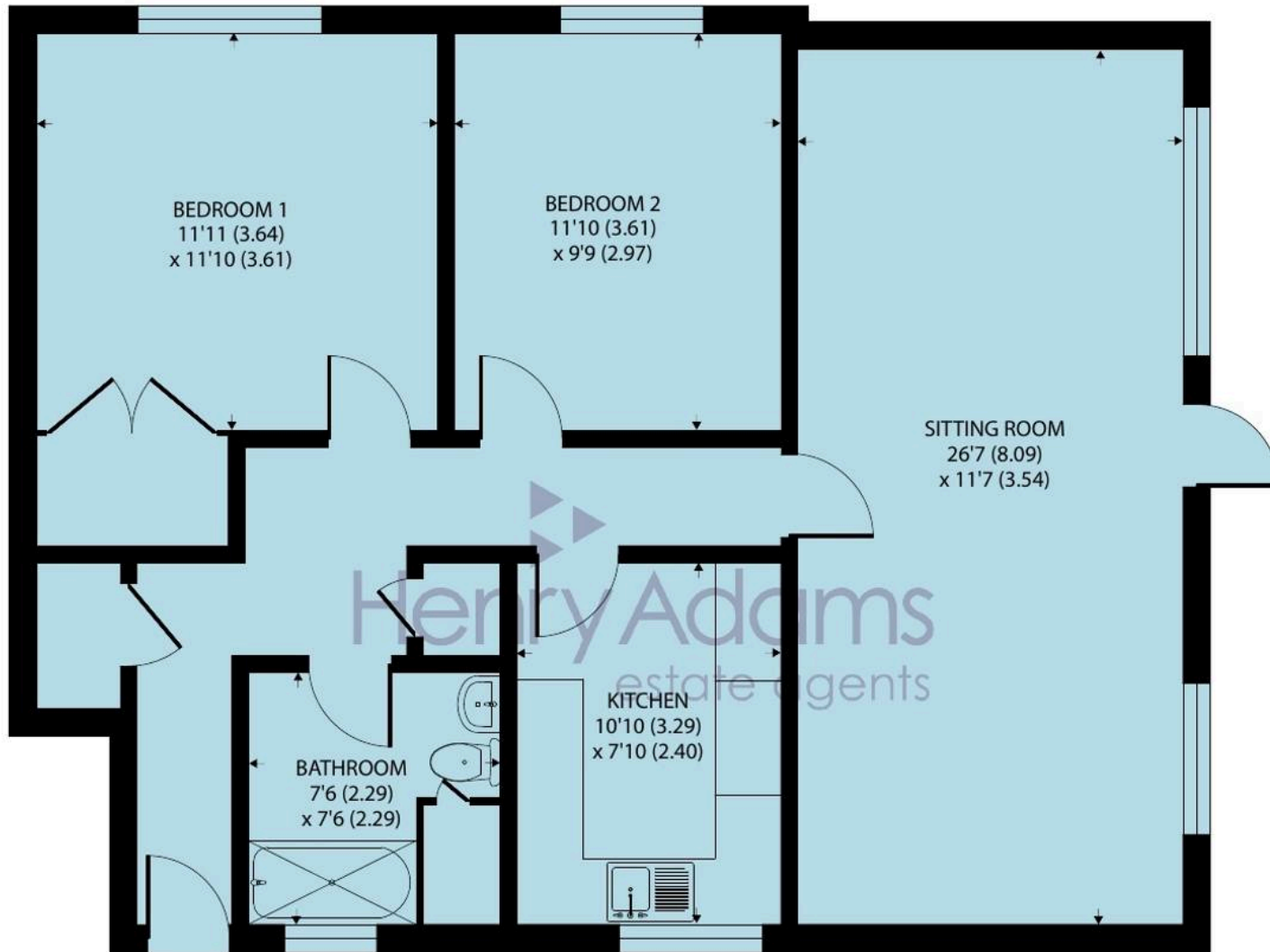
Council Tax band: C

Tenure: Leasehold

Annual Service charge: £3368 pa (approx.) This includes water charges

999 Year Lease from 1969 and Ground Rent of £17.00 pa.





SECOND FLOOR

Flat 19, Bourns Court, Ayshe Court Drive, Horsham, RH13 5RL

Approximate Area = 883 sq ft / 82 sq m

For identification only - Not to scale



Floor plan produced in accordance with RICS Property Measurement 2nd Edition, Incorporating International Property Measurement Standards (IPMS2 Residential). © natchecom 2024. Produced for Henry Adams. REF: 1206667



Henry Adams - Horsham

Henry Adams HRR Ltd, 50 Carfax, Horsham - RH12 1BP

01403 253271

horsham@henryadams.co.uk

www.henryadams.co.uk/

Agents Note - Our particulars are for guidance only and are intended to give a fair overall summary of the property. They do not form part of any contract or offer, and should not be relied upon as a statement or representation of fact. Measurements, areas and distances are approximate only. Photographs may include lifestyle shots and pictures of local views. No undertaking is given as to the structural condition of the property, or any necessary consents or the operating ability or efficiency of any service, system or appliance. Please ask if you would like further information, especially before you travel to the property.