



34 The Willows, Rue Horman, Grouville

In Excess of **£1,175,000**

BROADLANDS

FINDING YOU A HOME SINCE 1972

34 The Willows, Rue Horman

Grouville, Jersey

- Sought after west facing modern house in Gorey Village
- Open plan living room/dining room/ kitchen
- Three double bedrooms two bathrooms
- Ground floor cloakroom and utility room
- Stunning new kitchen
- Integral garage, two parking spaces and visitor parking
- Large west facing garden
- Superbly presented throughout
- Call Doug on 07700702585 or doug@broadlandsjersey.com



34 The Willows, Rue Horman

Grouville, Jersey

A rare opportunity to purchase a stunning three-bedroom, two-bathroom home within The Willows in Gorey Village. The development - completed in 2016 - has been expertly designed to reflect and complement its idyllic surroundings, blending seamlessly into one of the island's best-loved villages.

This semi-detached house occupies just under 2,000 square feet and comprises contemporary open-plan kitchen/living/dining room, stunning new conservatory, three double bedrooms, two bath/shower rooms, cloakroom, utility and integral garage with additional parking for 2 cars and further visitor parking available.

To the rear is a large private west facing garden perfect for relaxing and enjoying the summer sun, or entertaining should you feel more sociable. With a smaller front garden.

A brief stroll takes you into Gorey village and Harbour with its selection of restaurants, bars and cafes, and if you're into golf, the Royal Jersey Golf Club is a short walk from the house.





Living

Modern open plan living area with fully integrated kitchen. Superbly presented with patio doors opening into a stunning new conservatory. Separate utility room and cloakroom.

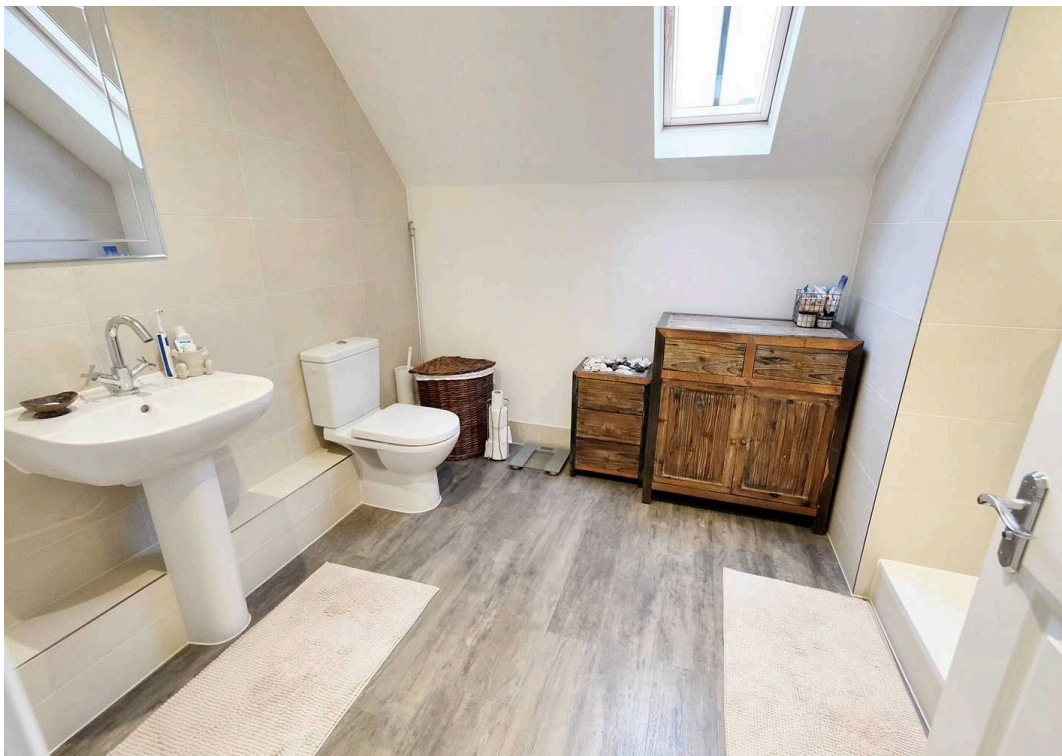
Sleeping

On the first floor you have two double bedrooms and a house bathroom. On the second floor you have the main suite, consisting of a generous size bedroom, dressing room and an en-suite.

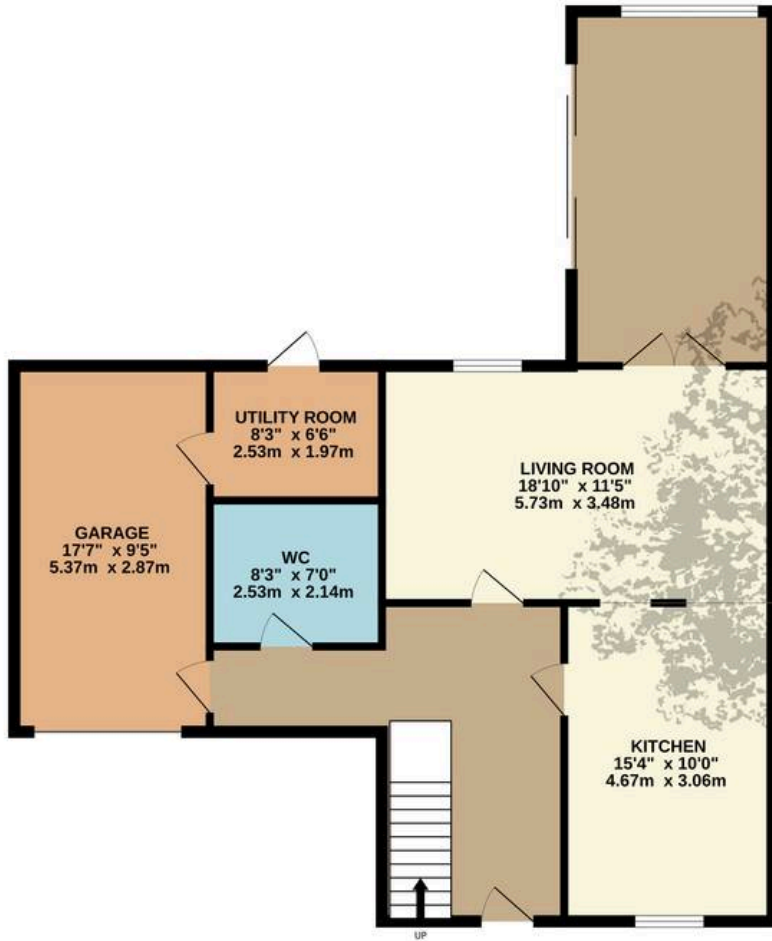
Services

All main services, only built in 2016. Electric heating and double glazing.

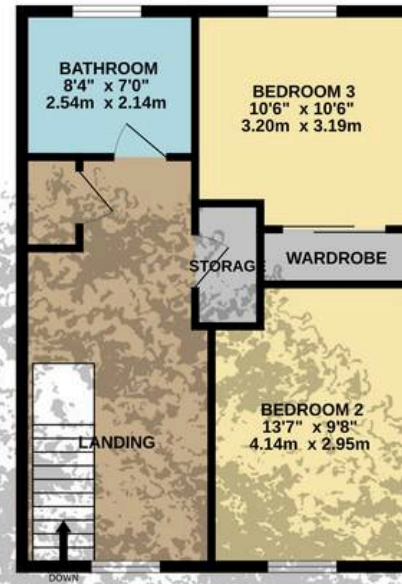




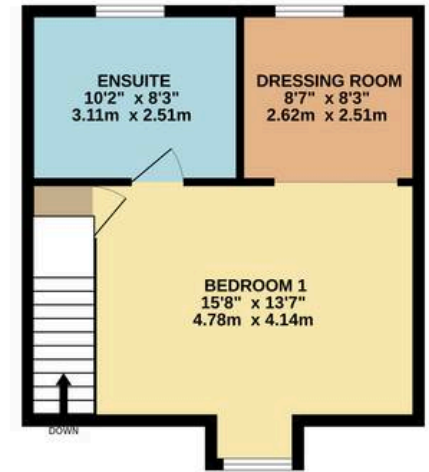
GROUND FLOOR
979 sq.ft. (91.0 sq.m.) approx.



1ST FLOOR
503 sq.ft. (46.7 sq.m.) approx.



2ND FLOOR
379 sq.ft. (35.2 sq.m.) approx.



TOTAL FLOOR AREA : 1789sq.ft. (166.2 sq.m.) approx.

Whilst every attempt has been made to ensure the accuracy of the floorplan contained here, measurements of doors, windows, rooms and any other items are approximate and no responsibility is taken for any error, omission or mis-statement. This plan is for illustrative purposes only and should be used as such by any prospective purchaser. The services, systems and appliances shown have not been tested and no guarantee as to their operability or efficiency can be given.

Made with Metropix ©2024



Broadlands

Broadlands Estates, Library Place - JE2 3NL

01534 880770 • enquiries@broadlandsjersey.com • www.broadlandsjersey.com/

BROADLANDS

FINDING YOU A HOME SINCE 1972