



School Lane, Weston Turville - HP22 5SE
£855,000





School Lane

Weston Turville, Aylesbury

- Large Driveway and Electric Car Charging Point
- Ground Floor Cloakroom/Shower Room
- Sitting Room with Log Burner
- Fitted Kitchen / Breakfast Room
- Master Bedroom with En-Suite Bathroom
- Four Further Bedrooms
- Southerly Facing Garden
- Single Garage with Power and Light

Weston Turville is an attractive village conveniently located between Aylesbury and Wendover with a bus route linking both. There is a combined infant and junior school, small parade of shops, well attended church, three pubs/restaurants, a golf club and a village hall. There are many opportunities for recreation close to the village including Wendover Woods and Coombe Hill and most sports are available in the Aylesbury Vale. Road access to London could either be via the A413 and M40 or the A41 and M1 and the neighbouring village of Wendover has a railway station which is on the Chilterns Railway Line providing commuter services to Marylebone in 45-50 minutes. It also offers good day to day shopping facilities and has a regular weekly market on Thursdays, health centre, dentists and library. The renowned Grammar School and High Schools are in Aylesbury together with the Sir Henry Floyd co-ed Grammar School.



School Lane

Weston Turville, Aylesbury

An immaculate five bedroom detached family home finished to a very high standard, located in a popular village location with a sunny, southerly facing rear garden

Situated in the heart of the village, this property offers spacious and well-appointed accommodation comprising: entrance hall, guest cloakroom with shower and a utility cupboard which has plumbing for a washing machine, sitting room with log burner, dining room with double doors leading out to the garden, superb kitchen/breakfast room fitted with a good range of eye level and base units with integrated appliances including dishwasher, double oven, 5 ring gas hob and extractor, with space for an American style fridge freezer. To the first floor is a spacious landing, a family bathroom fitted with a three piece white suite and five bedrooms comprising: master bedroom with en-suite bathroom, three further double bedrooms and a single bedroom with one of the bedrooms currently fitted with custom made office furniture.

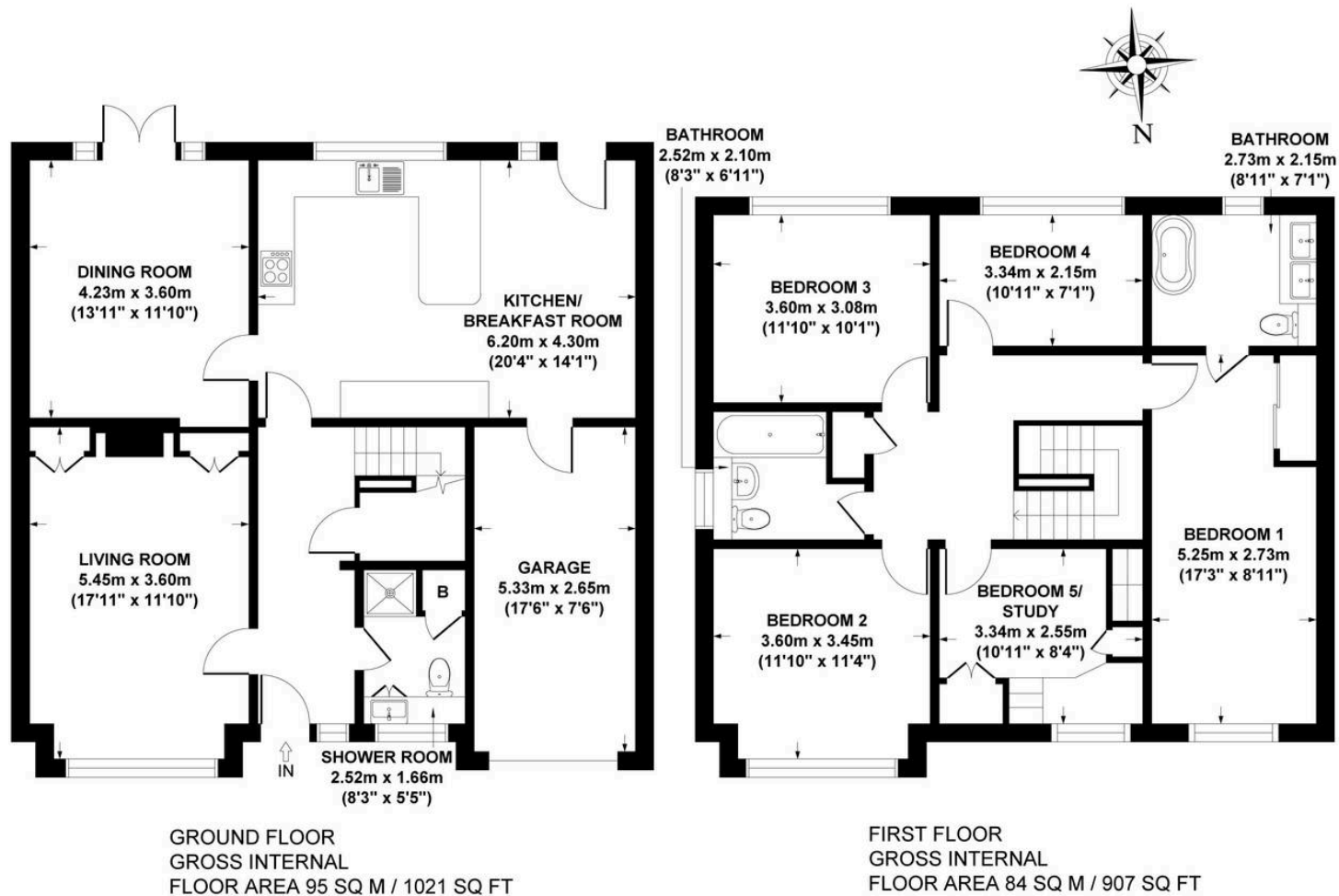
Council Tax band: G

Tenure: Freehold

EPC Energy Efficiency Rating: D

EPC Environmental Impact Rating: D





SCHOOL LANE, WESTON TURVILLE, HP22 5SE
APPROX. GROSS INTERNAL FLOOR AREA 179 SQ M / 1928 SQ FT
(INCLUDING GARAGE)
 FLOOR PLAN IDENTIFICATION PURPOSES ONLY -NOT TO SCALE

Tim Russ and Company

Tim Russ & Co, 4 Chiltern Court Back Street - HP22 6EP

01296 621177 • wendover@timruss.co.uk • timruss.co.uk/

