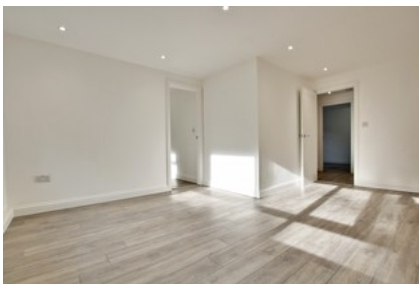







Warham Road Croydon



- ✓ Newly Refurbished
- ✓ Ground Floor
- ✓ Great Location
- ✓ New Kitchen & Bathroom
- ✓ Next To South Croydon Train Station
- ✓ Within Close Proximity To Croydon Shopping Center
- ✓ Two Bedrooms
- ✓ Of Road Parking

£1,475 PCM

Bedroom  2 Bathroom  1 Reception  1