



2 Bedroom Semi-Detached Bungalow located in Tiptree.

Find us on..



JOHN ALEXANDER
ESTATE AGENTS

Heycroft Way Tiptree Colchester CO5 0DG



2



1



1



EPC

TBC

Guide Price **£325,000**
to **£350,000**

FULL DESCRIPTION

OVERVIEW

John Alexander are delighted to offer this Two bedroom bungalow located in Heycroft way. This property has been kept in an immaculate condition. Benefiting from two double bedrooms, shower room, a large lounge, kitchen and conservatory. This property is offered with no onward chain.

HALLWAY

Radiator, storage cupboard housing gas combi, boiler doors to;

LOUNGE

11' 1" x 17' 4" (3.38m x 5.28m)

French doors to rear, radiator , gas fire with surround.

KITCHEN

9' 4" x 8' 6" (2.84m x 2.59m)

Window to side, matching eye and base units, space for cooker, fridge and washing machine, sink with drainer, extractor, door to conservatory.

CONSERVATORY

14' 3" x 6' 1" (4.34m x 1.85m)

Radiator, doors to garden.

BEDROOM ONE

12' 4" x 11' 7" (3.76m x 3.53m)

Window to front, radiator.

BEDROOM TWO

9' 4" x 8' 4" (2.84m x 2.54m)

Window to front, radiator.

SHOWER ROOM

Obscured window to rear, low level W.C, wash hand basin, radiator, shower cubicle.

GARDEN

Mainly laid to lawn, with flower and shrub boards, patio area, shed to remain with power connected.





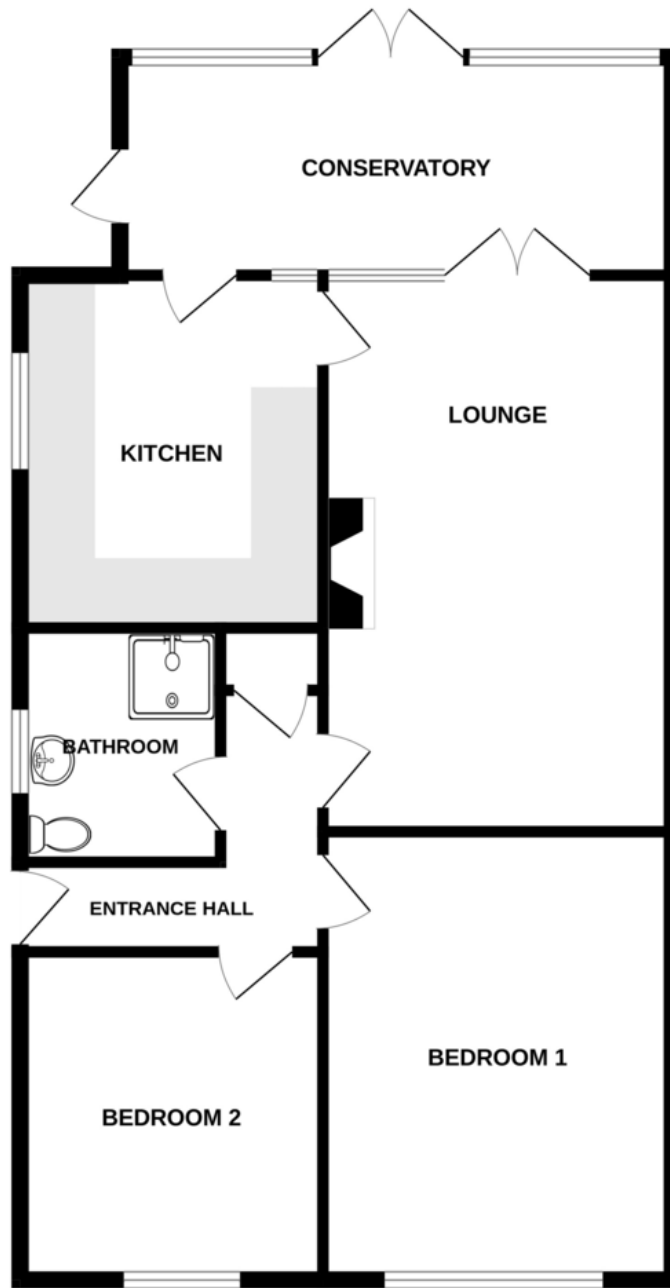


Heycroft Way, Tiptree CO5 0DG



FLOORPLAN

GROUND FLOOR



CONTACT
1 Church Road
Tiptree
Colchester
Essex
CO5 0LG

E info@john-alexander.co.uk

T 01621 814334 www.john-alexander.co.uk

Find us on..



JOHN ALEXANDER
ESTATE AGENTS