



Clayton End Terrace, Sillars Green, Tetbury Road

Malmesbury

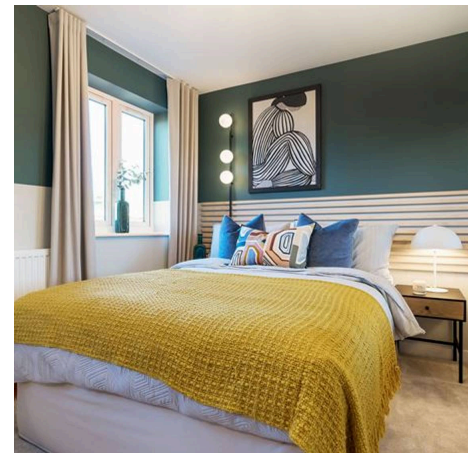
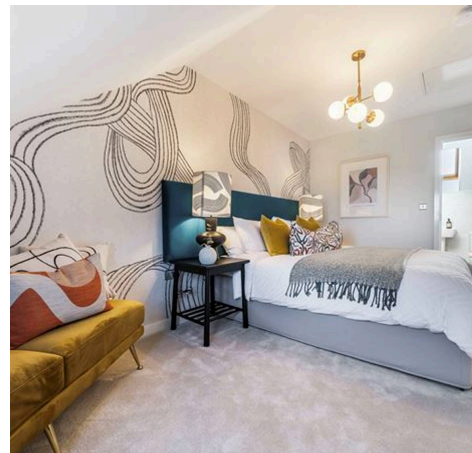
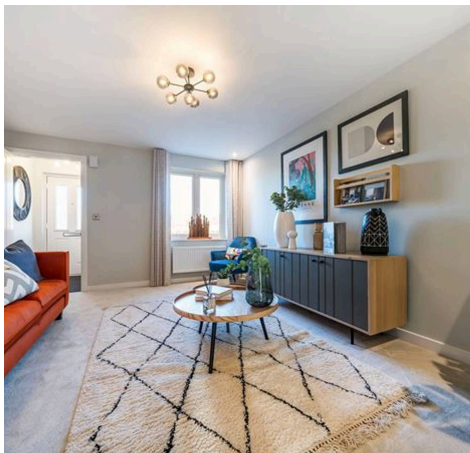
£399,995



Clayton End Terrace, Sillars Green

Tetbury Road, Malmesbury

Nestled within a sought-after neighbourhood, this stunning 3-bedroom end of terrace house offers the epitome of modern living. Impeccably designed, this new-build property boasts contemporary features, including solar panels that epitomise energy efficiency. Upon entering, you are greeted by a bright and spacious reception room. The property further impresses with a thoughtfully designed kitchen. The master bedroom features an en-suite bathroom for added privacy and convenience, while two additional bedrooms offer ample space for guests or a growing family. The property also benefits from a utility room, and a WC. With the added advantage of being an end-terrace property, enjoy the additional privacy and seclusion that this home offers. A single garage and parking space complete this exceptional property. The outdoor space presents a versatile canvas for outdoor enjoyment and relaxation, ideal for hosting summer gatherings or simply enjoying a peaceful moment after a busy day.



- NEW BUILD
- SOLAR PANELS
- LARGE RECEPTION
- SINGLE GARAGE
- PARKING SPACE
- EN-SUITE TO MASTER
- THREE BEDROOMS
- UTILITY ROOM AND WC
- END TERRACE

Entrance Hall

Living Room

18' 6" x 10' 3" (5.63m x 3.13m)

Kitchen/Dining Room

18' 6" x 9' 5" (5.63m x 2.86m)

Utility

WC

Landing

Bedroom 1

18' 6" x 10' 5" (5.63m x 3.17m)

En-Suite

Bedroom 2

10' 8" x 9' 2" (3.24m x 2.80m)

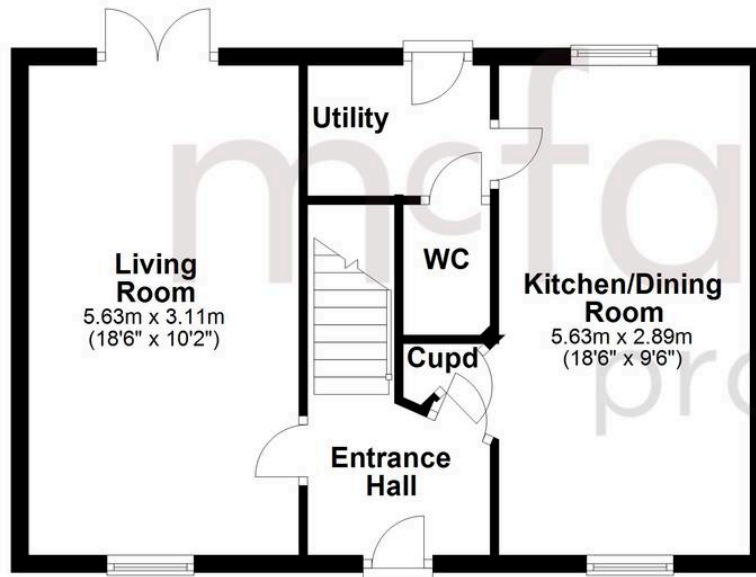
Bedroom 3

7' 7" x 9' 2" (2.30m x 2.80m)

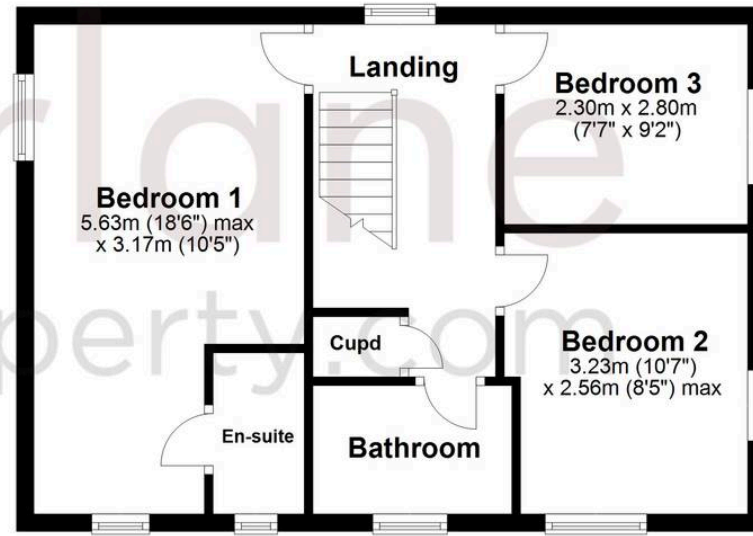
Bathroom



Ground Floor



First Floor



McFarlane Sales & Lettings

McFarlane Sales & Letting, 106 High Street - SN8 1LT

01672 514380 • marlborough@mcfarlaneproperty.com • www.mcfarlaneproperty.com/