



Moseley, Sillars Green, Tetbury Road

Malmesbury

£309,995

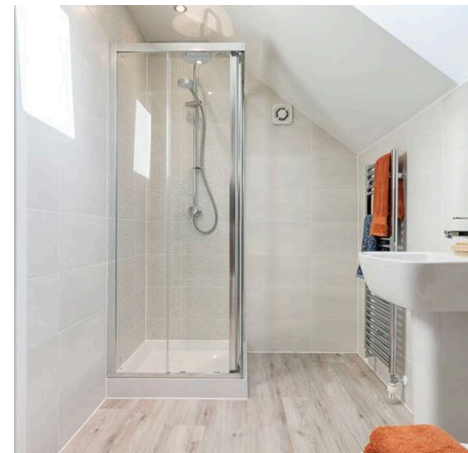
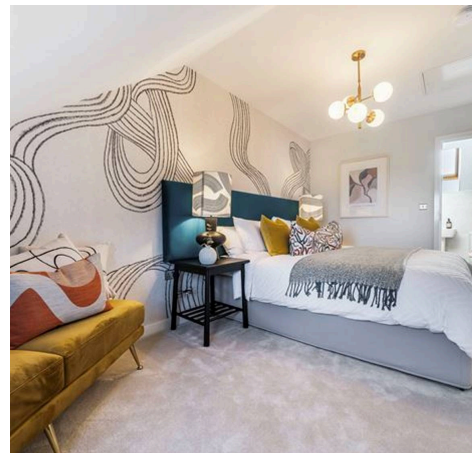


Moseley, Sillars Green

Tetbury Road, Malmesbury

Nestled in a charming neighbourhood, this stunning end of terrace house presents itself as a tastefully decorated new build. As you step inside this captivating abode, you are welcomed by an airy and spacious layout, featuring an open plan kitchen, dining, and living area that is sure to be the heart of the home. The main bedroom, extending over 15 feet, offers a luxurious retreat for relaxation after a long day. With three bedrooms in total, this property provides ample space for a growing family or those who enjoy having extra room for guests. Convenience is key with two designated parking spaces and a WC for added functionality. Don't miss the opportunity to make this enchanting property your own and experience the perfect blend of comfort and style in a picturesque setting.

- NEW BUILD
- MID TERRACE
- OVER 15FT MAIN BEDROOM
- OPEN PLAN KITCHEN/DINING/LIVING
- THREE BEDROOMS
- 2 PARKING SPACES
- WC



Entrance Hall

Kitchen/Dining/Living Room

22' 2" x 12' 2" (6.75m x 3.71m)

WC

Landing

Bedroom 2

7' 10" x 12' 2" (2.39m x 3.71m)

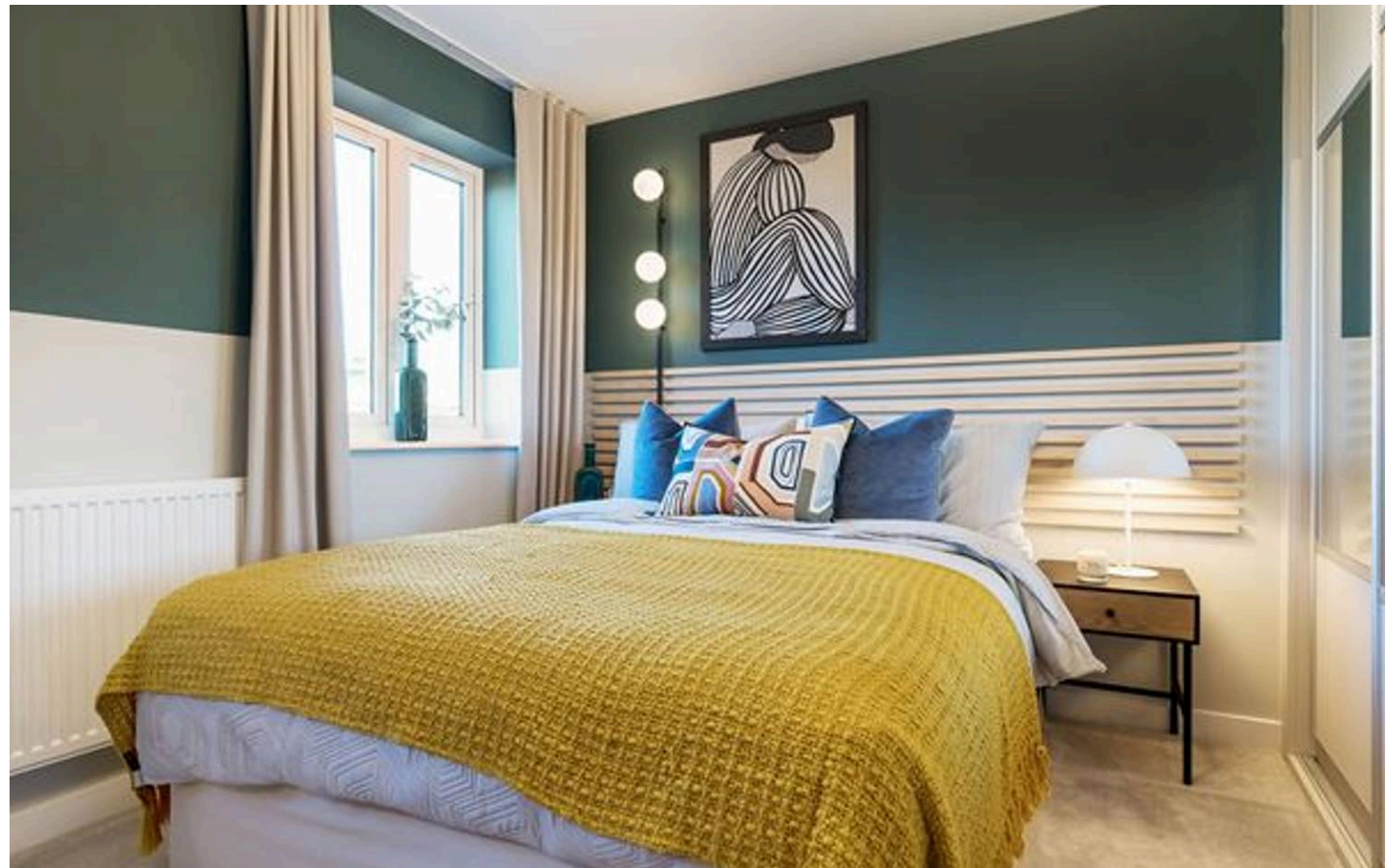
Bedroom 3

7' 9" x 12' 2" (2.36m x 3.71m)

Bathroom

Bedroom 1

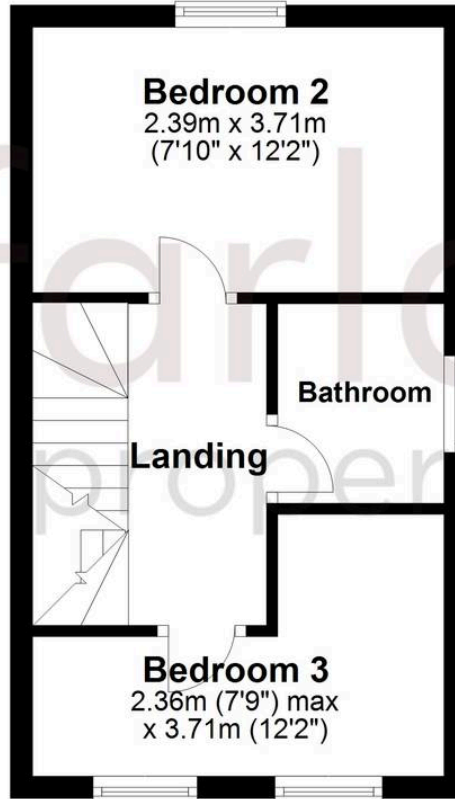
15' 7" x 9' 0" (4.75m x 2.75m)



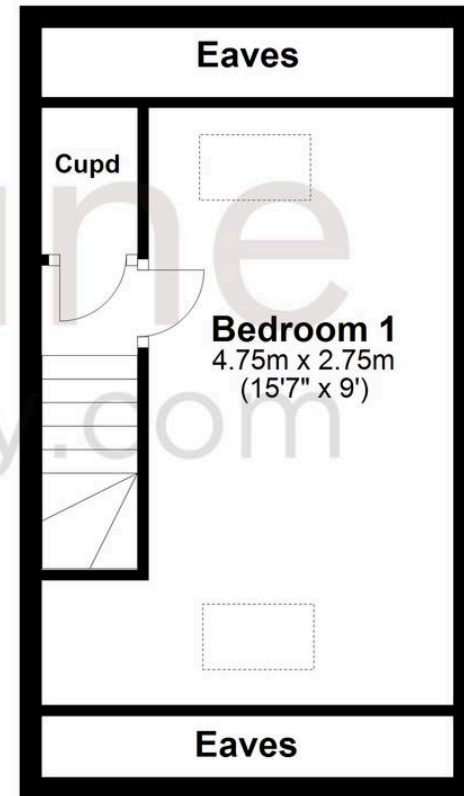
Ground Floor



First Floor



Second Floor



McFarlane Sales & Lettings

North Swindon, Redhouse Village Centre, Swindon - SN25 2FW

01793 296600 • swindon@mcfarlaneproperty.com • www.mcfarlaneproperty.com/