



1 Northcourt Mews, Abingdon OX14 1GW



Hodsons
...your move, our passion
Sales | Lettings

1 Northcourt Mews

Abingdon

SOLD WITH NO ONGOING CHAIN, spacious and very well presented two bedroom ground floor maisonette, benefiting from its own private front door offering many features including a desirable well-equipped open-plan kitchen/dining/living room and a master bedroom with en-suite shower room, well-situated within this small, select development, offering easy pedestrian access to many nearby amenities.

Location

1 Northcourt Mews is well-situated on the edge of this small, select development and offers easy pedestrian access to many nearby amenities combined with a quick route onto the A34 leading to many important destinations north and south. Useful distances include Abingdon town centre (circa. 0.5 miles), Oxford city (circa. 6 miles) and Radley railway station (circa. 2 miles).

Bedrooms: 2

Bathrooms: 2

Reception Rooms: 1

Council Tax band: C

Tenure: Leasehold

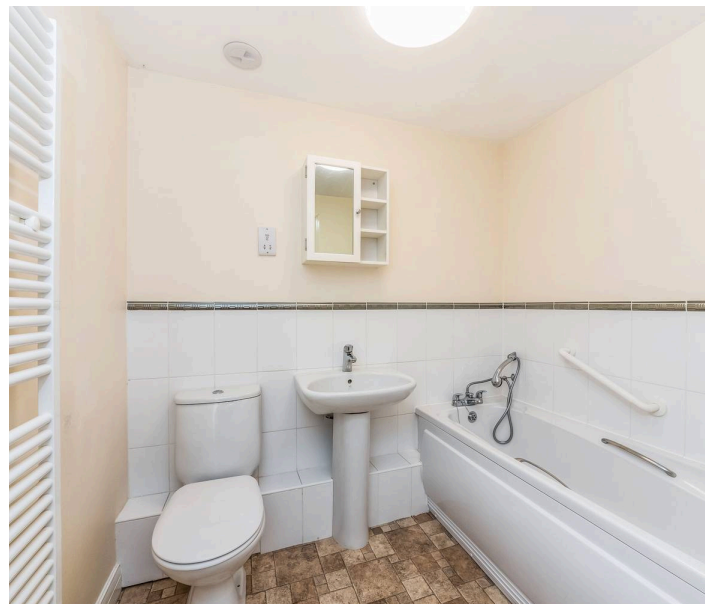
EPC Energy Efficiency Rating: C

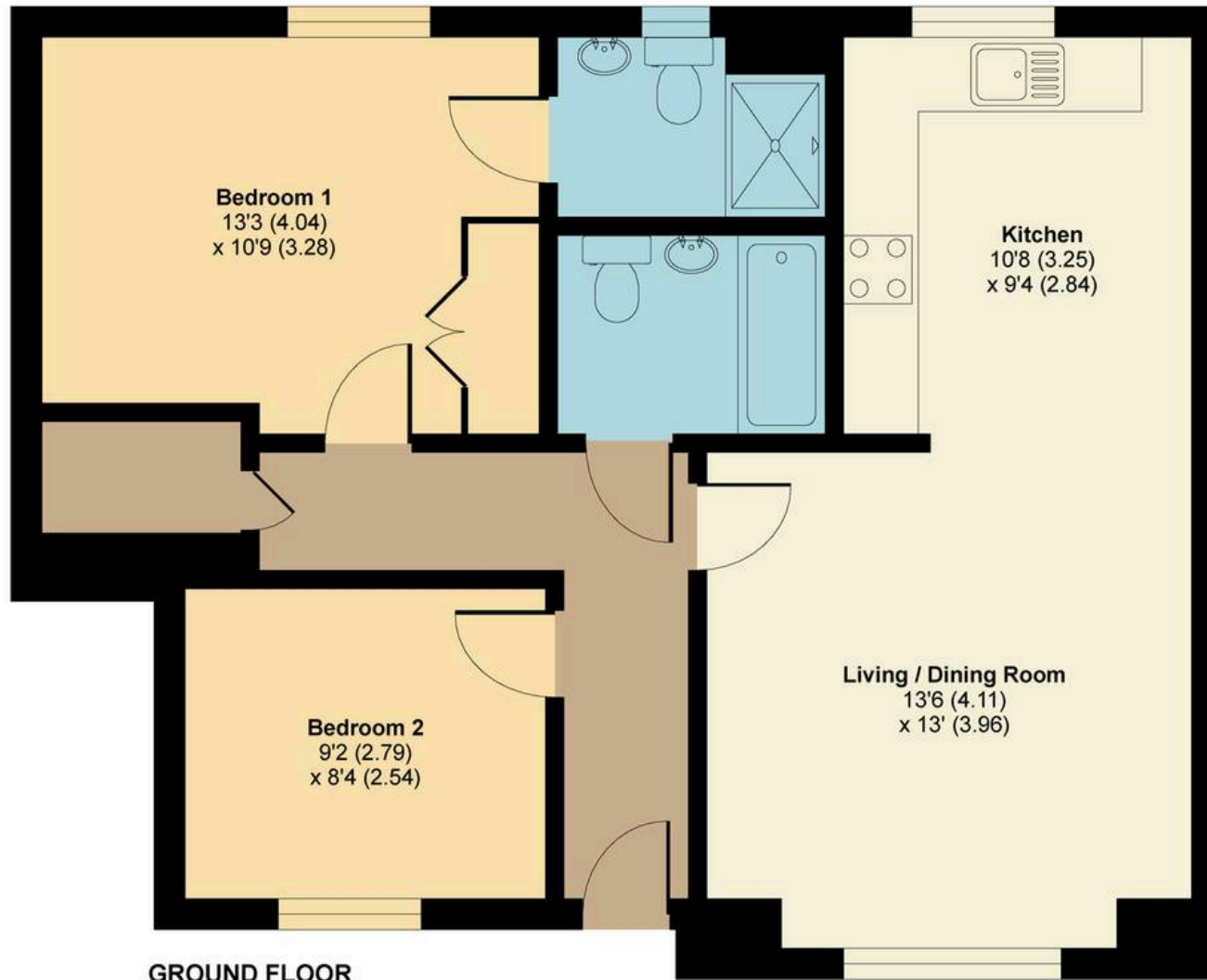




Key Features

- Entrance hall leading to a large master bedroom with built-in wardrobe cupboards and en-suite shower room
- Second double bedroom complemented by a further bathroom with white suite
- Desirable open-plan double aspect kitchen/dining/living room
- Well-maintained communal gardens and the property benefits from two allocated parking facilities
- Excellent lease with approximately 107 years remaining
- PVC double-glazed windows, mains gas radiator central heating and the property is sold with no ongoing chain
- The service charge is approximately £1,347 pa and ground rent is £350 pa





GROUND FLOOR

Northcourt Mews, Abingdon, OX14

APPROX. GROSS INTERNAL FLOOR AREA 697 SQ FT 64.7 SQ METRES

Whilst every attempt has been made to ensure the accuracy of the floor plan contained here, measurements of doors, windows and rooms are approximate and no responsibility is taken for any error, omission or misstatement. These plans are for representation purposes only as defined by RICS Code of Measuring Practice and should be used as such by any prospective purchaser. Specifically no guarantee is given on the total square footage of the property if quoted on this plan. Any figure given is for initial guidance only and should not be relied on as a basis of valuation.

Copyright nichecom.co.uk 2016 Produced for Hodsons REF : 100729



5 Ock Street, Abingdon,
Oxfordshire, OX14 5AL
T: 01235 553686
E: abingdon@hodsons.co.uk
www.hodsons.co.uk