



8 Fairmile Park Copse, Cobham
£3,000 pcm

GROSVENOR
SURREY



8 Fairmile Park Copse

Cobham, Cobham

A good sized three bedroom detached bungalow that's available for a flexible term. The house would ideally suit for a family wanting to break a chain or that is developing their own home. The house has many original features but the current owners have brought a new lease of life into the property by replacing all the carpets and flooring throughout along with some of the kitchen appliances making it a comfortable home.

The property is located in a small cul-de-sac on a very generous plot backing on the Reeds school playing fields.

EPC D



Approximate Gross Internal Area = 117 sq m / 1259 sq ft
Garage = 14.5 sq m / 156 sq ft
Total = 131.5 sq m / 1415 sq ft

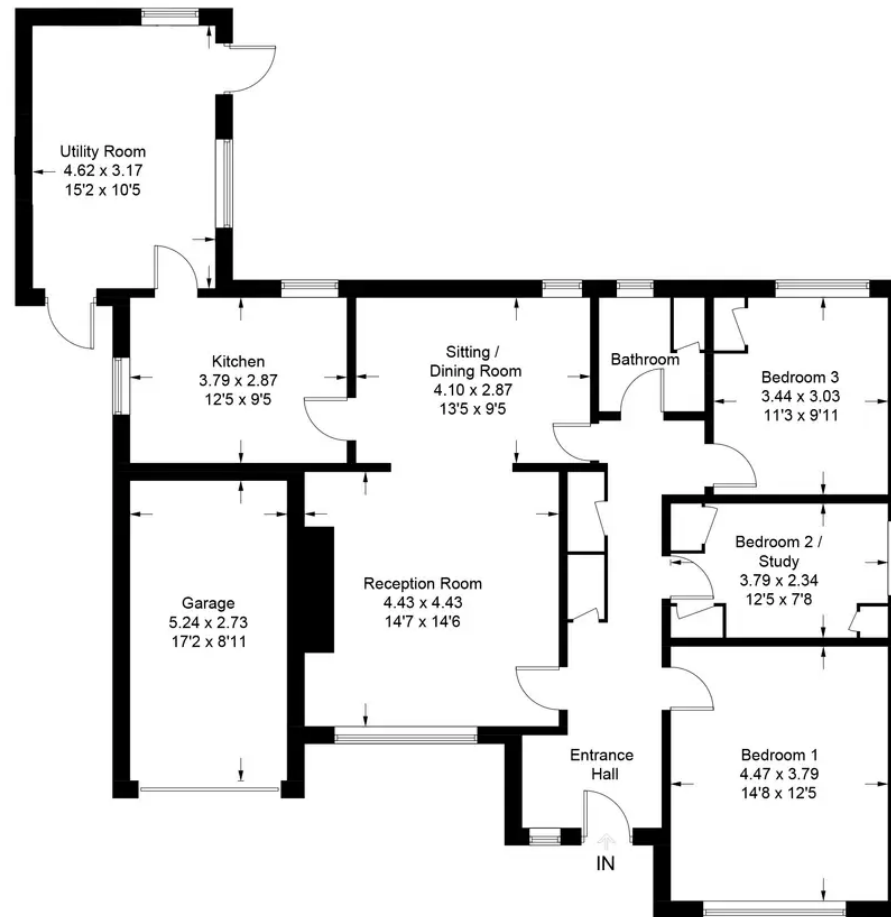


Illustration for identification purposes only, measurements are approximate, not to scale. floorplansUsketch.com © (ID973375)

Grosvenor Surrey - Cobham

Grosvenor Surrey, 8 High Street, Cobham - KT11 3DY

01932 588288 · cobham@wearegrosvenor.co.uk · <http://www.wearegrosvenor.co.uk>

GROSVENOR
SURREY