

SHARED
OWNERSHIP
AVAILABLE

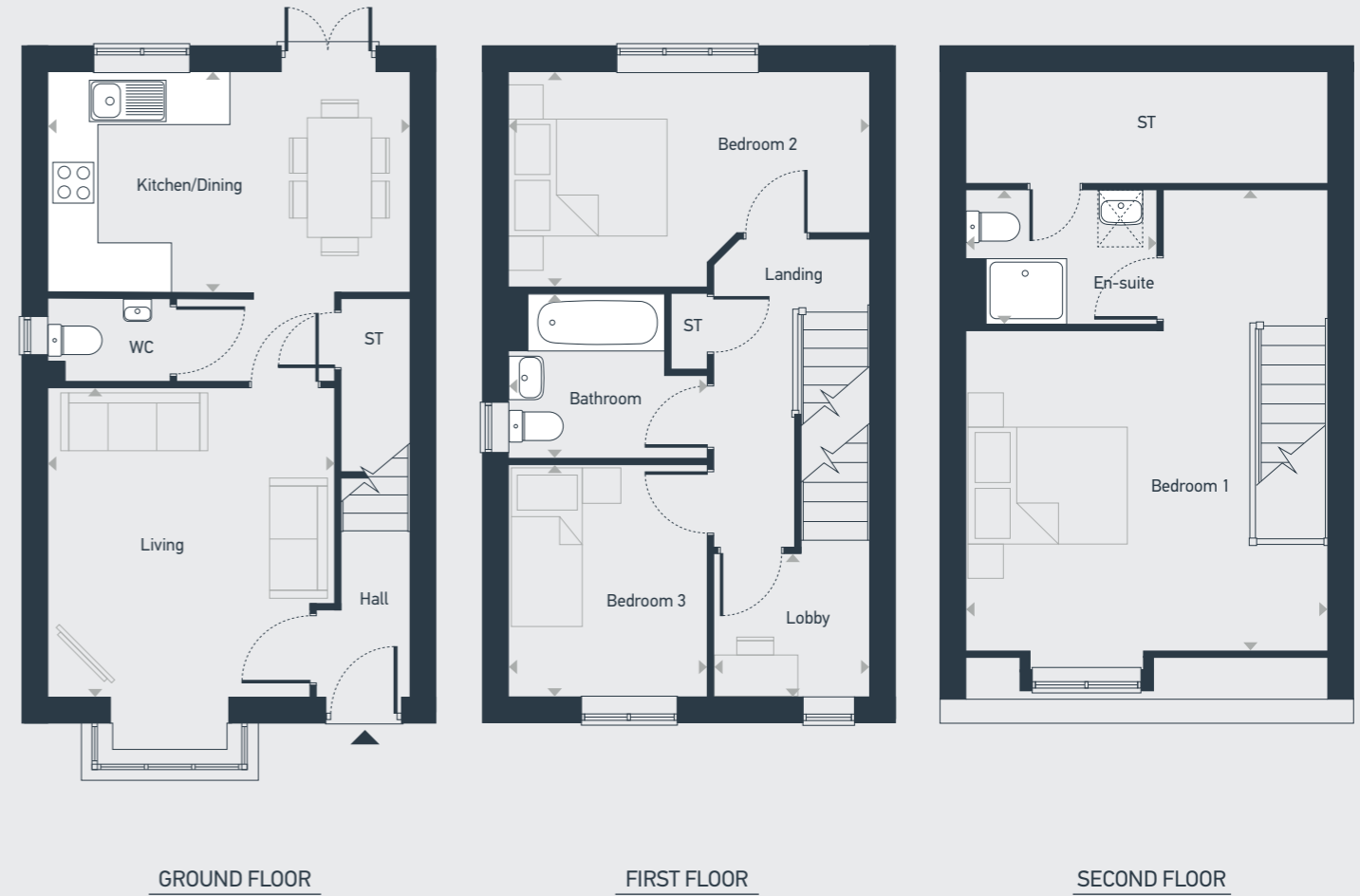
Vision



Somewhere to call home

Plots as drawn: 178, 179, 180, 181, 241 and 242
Handed:

98.66 sq.m / 1,062 sq.ft



ST: Store WC: Water Closet ☒: Roof Light

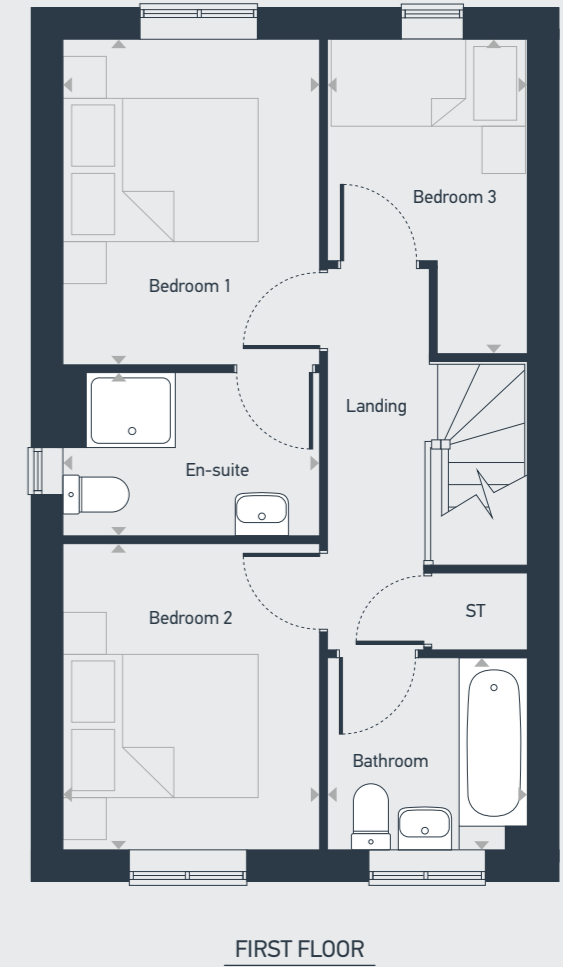
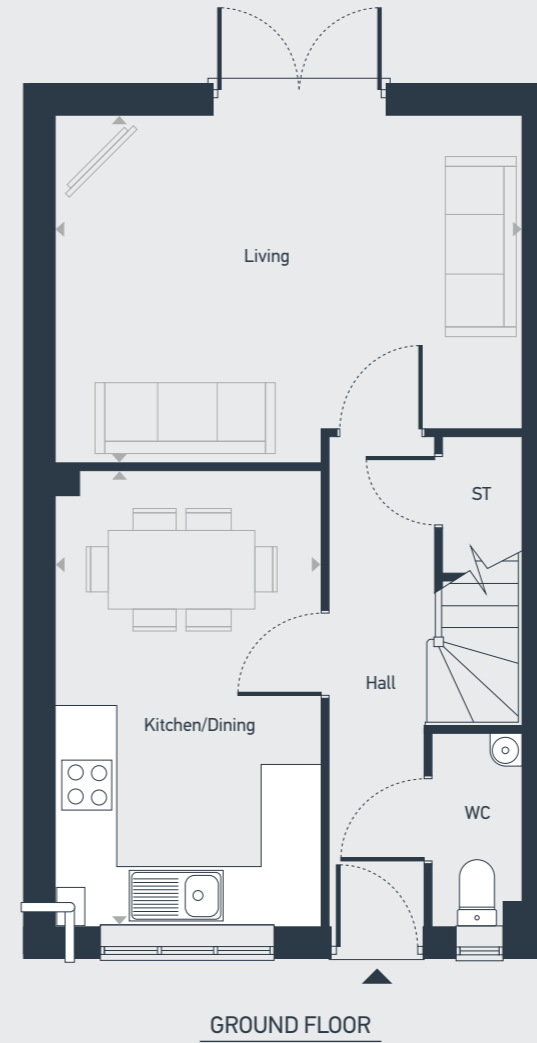
DIMENSIONS	m	ft
Kitchen/Dining	4.49m x 2.74m	14'8" x 8'11"
Living	3.89m x 3.55m	12'9" x 11'7"

DIMENSIONS	m	ft
Bedroom 1	4.50m x 3.98m	14'9" x 13'0"
En-suite	2.37m x 1.66m	7'9" x 5'5"
Bedroom 2	4.50m x 2.67m	14'9" x 8'9"
Bedroom 3	2.88m x 2.47m	9'5" x 8'1"
Bathroom	2.47m x 2.03m	8'1" x 6'8"
Lobby	1.94m x 1.78m	6'4" x 5'9"



Plots as drawn: 176, 177, 184, 185, 204, 205, 224 and 258
Handed:

79.06 sq.m / 851 sq.ft



ST: Store WC: Water Closet

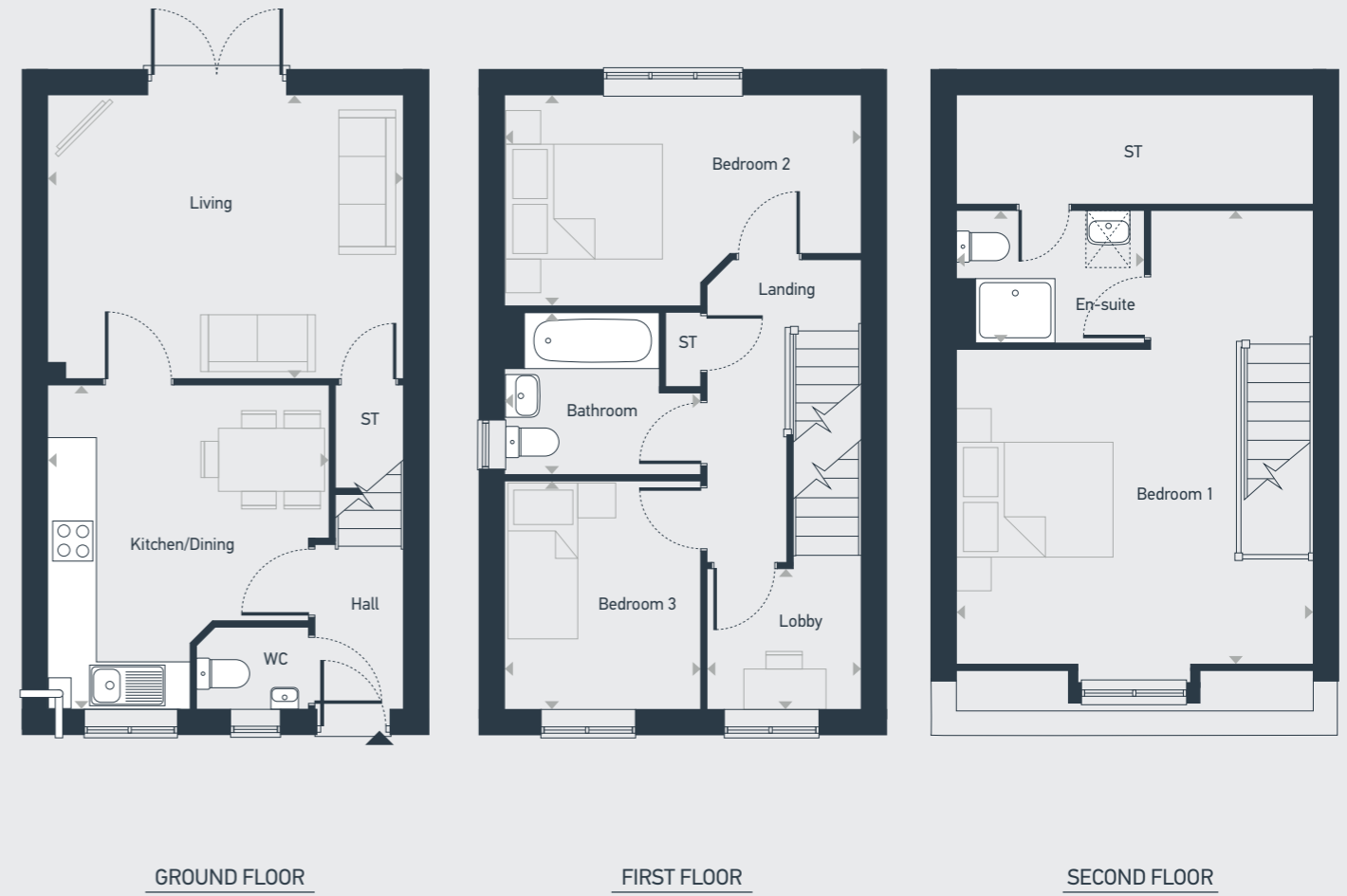
DIMENSIONS	m	ft
Kitchen/Dining	4.61m x 2.68m	15'1" x 8'9"
Living	4.72m x 3.52m	15'5" x 11'6"

DIMENSIONS	m	ft
Bedroom 1	3.29m x 2.60m	10' 9" x 8'6"
En-suite	2.60m x 1.64m	8'6" x 5'4"
Bedroom 2	3.10m x 2.60m	10'2" x 8'6"
Bedroom 3	3.20m x 2.02m	10'6" x 6'7"
Bathroom	2.03m x 1.94m	6'7" x 6'4"



Plots as drawn: 182, 183 246 and 299
Handed:

97.92 sq.m / 1,054 sq.ft






ST: Store WC: Water Closet ☒: Roof Light

DIMENSIONS	m	ft
Kitchen/Dining	4.10m x 3.54m	13'5" x 11'7"
Living	4.50m x 3.58m	14'9" x 11'8"

DIMENSIONS	m	ft
Bedroom 1	4.50m x 3.98m	14'9" x 13'0"
En-suite	2.37m x 1.66m	7'9" x 5'5"
Bedroom 2	4.50m x 2.70m	14'9" x 8'9"
Bedroom 3	2.88m x 2.47m	9'5" x 8'1"
Bathroom	2.47m x 2.03m	8'1" x 6'8"
Lobby	1.94m x 1.78m	6'4" x 5'9"



-  **The Bamburgh**
2 bedroom home
-  **The Caddington**
3 bedroom home
-  **The Stratton**
3 bedroom home



01274 531233 | centralandnorthsales@placesforpeople.co.uk | placesforpeople.co.uk/vision
Market Square, Shipley BD18 3QB

Please note: All CGIs, floor plans, configurations, maps and information are intended for guidance only and accuracy of this information cannot be relied upon by prospective purchasers who must make their own enquiries to satisfy themselves by inspection or otherwise as to the correct detail, including individual plot plans and colours. Sizes and dimensions approximate and subject to change. Correct at time of print – June 2024

Vision

Specifications

GENERAL

- Fitted carpets and vinyl flooring throughout
- White sockets and switches
- Chrome ironmongery to internal doors
- Turfed and/or Landscaped front garden in accordance with landscaping plan
- Turf to rear garden
- Outside tap
- White 5 panel vertical internal doors
- UPVC double glazed windows
- UPVC double glazed French doors (Design permitting)
- Hive heating - dual zone programmable gas central heating system with thermostatic radiator valves (High efficiency)
- Grey slab patio fitted (x6 slabs)
- Door numbers to front of property

DECORATING

- Matt emulsion painted walls and ceilings
- White gloss paint to interior woodwork

KITCHEN

- Gas hob, splash back, extractor hood
- Integrated Fridge/Freezer
- Stainless steel single bowl and half sink
- Chrome sockets & switches above worktops*
- LED downlighters in Kitchen*

BATHROOM/EN-SUITE

- Thermostatic shower in en-suite and bathroom
- Extractor fan to bathroom and ensuite
- Moisture resistant light fitting
- Full height tiling around bath
- Shower over bath with shower screen

ELECTRICAL

- Media plate to lounge
- TV Ariel socket to bed 1
- BT socket to lounge & bed 1
- USB charge point - double socket (Kitchen & bed 1)
- Outside light*

SAFETY & SECURITY

- Security latches to windows except fire egress
- Mains connected smoke detectors to hallway and landing
- Doorbell
- Burglar alarm

*On selected plots only, please speak to the Sales Agent for further details.

Follow us on
 @placesnewhomes
 @placesforpeopleofficial

#BecauseCommunityMatters



01274 531233 | centralandnorthsales@placesforpeople.co.uk | placesforpeople.co.uk/vision
Market Square, Shipley BD18 3QB

Please note: The specifications outlined above are for indication purposes only. There may be changes throughout the build process to specific brand, materials and appliances referred to in the specification. In such cases, an alternative of similar quality will be provided. Any alterations of the specification will be of equal to or greater value, and Places for People reserve the right to implement changes to the specification without warning. This information is for guidance only and does not form any part of any contract or constitute a warranty. Please consult your Sales Executive for further information. Correct as of June 2024.



01274 531233 | centralandnorthsales@placesforpeople.co.uk | placesforpeople.co.uk/vision
Market Square, Shipley BD18 3QB

Shared ownership terms and conditions apply. Please talk to us for further details. Applications are subject to affordability and eligibility criteria.

Places for People and any joint agents give notice that: 1. The text, photographs, computer generated images and plans are for guidance only and are not necessarily comprehensive. 2. These particulars were prepared from preliminary plans and specifications before the completion of the properties. These particulars, together with any images that they contain, are intended only as a guide. They may have been changed during construction and final finishes could vary. This information is for guidance only and does not form any part of any contract or constitute a warranty. 3. There may be changes throughout the build process to specific brands, materials and appliances referred to in the specification. In such cases, an alternative of similar quality will be provided.