



Tetbury, Sillars Green, Tetbury Road

Malmesbury

£279,995

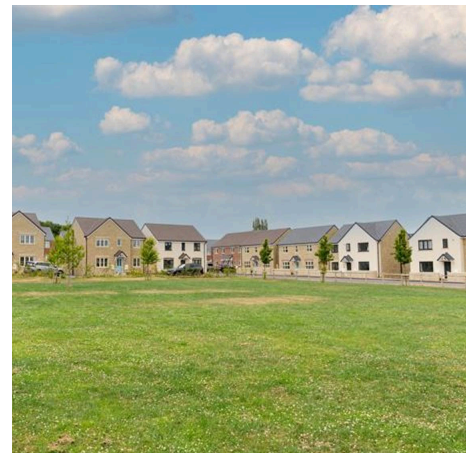
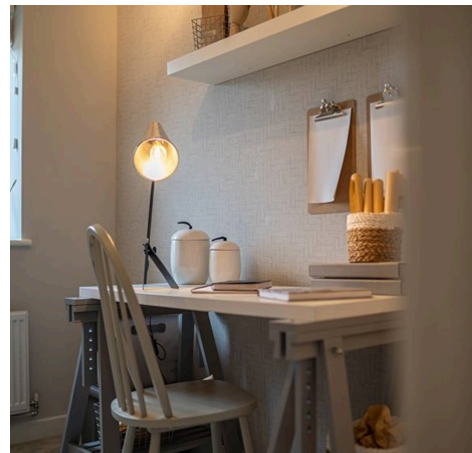


Tetbury, Sillars Green

Tetbury Road, Malmesbury

Introducing this exceptional 2 Bedroom Coach House residing in a NEW BUILD development, this property exudes modernity and comfort. Situated uniquely above FOUR GARAGES, this COACH HOUSE offers a rare and impressive living experience. Perfectly suited for FIRST TIME BUYERS, this home features a spacious and bright living/dining room, ideal for entertaining guests or unwinding after a long day. The SEPARATE KITCHEN provides a functional and stylish space for culinary creations. Additionally, the property boasts a convenient SINGLE GARAGE and a designated PARKING SPACE, ensuring both security and ease of access. With a contemporary design and prime location, this Coach House presents a fantastic opportunity to step into the property market with style and convenience.

Experience the epitome of contemporary living with this exceptional Coach House that is sure to impress even the most discerning home seeker.



- NEW BUILD
- COACH HOUSE OVER FOUR GARAGES
- IDEAL FOR FIRST TIME BUYERS
- LARGE LIVING/DINING ROOM
- SEPARATE KITCHEN
- SINGLE GARAGE
- PARKING SPACE

Entrance

Landing

Living/Kitchen/Dining Room

Bedroom 1

17' 0" x 10' 4" (5.18m x 3.14m)

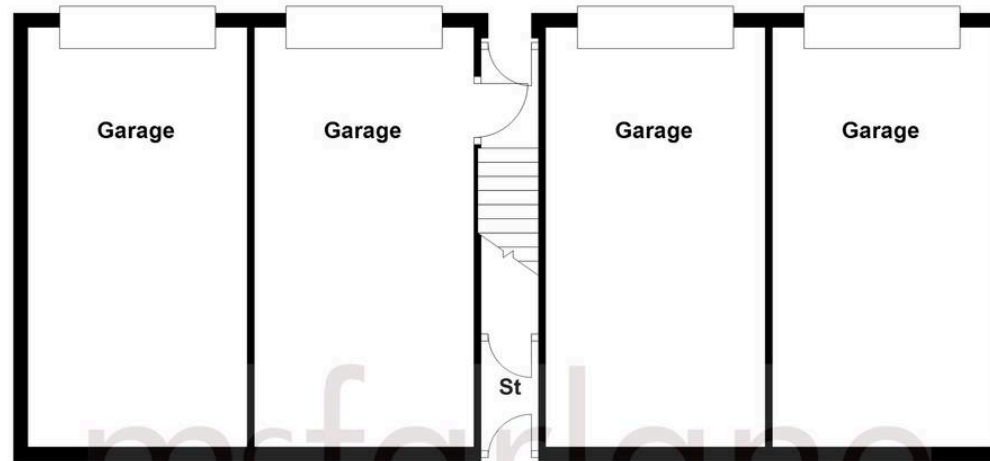
Bedroom 2

17' 0" x 8' 10" (5.17m x 2.70m)

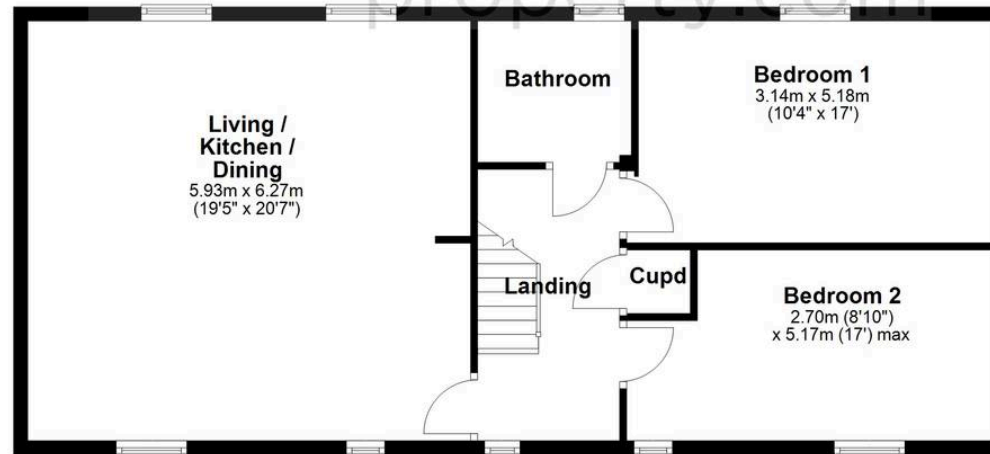
Bathroom



Ground Floor



First Floor



McFarlane Sales & Lettings

Cricklade Sales, 36 High Street, Cricklade - SN6 6AY

01793 751044 • cricklade@mcfarlaneproperty.com • www.mcfarlaneproperty.com/