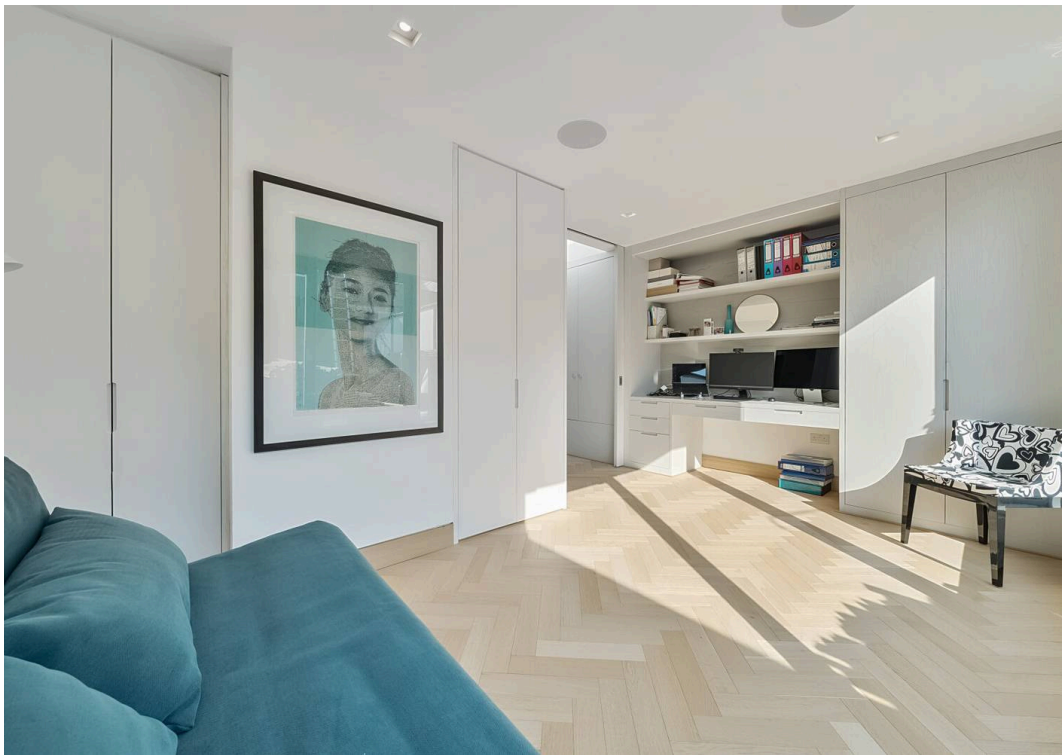


Bell Yard Mews, SE1







Bell Yard Mews.

- Comprehensively refurbished to the highest specification with particular attention to the detail and materials.
- Professionally installed Kite wood flooring
- Smart Home with Control 4 system managing lighting, Air conditioning, Audio and Audio Visual throughout the interior.
- Semi professional kitchen from Eggersman with high end integrated appliances from Miele and VZug.
- Outstanding views of the London Eye, The Shard, Tower Bridge and the City skyline.
- Voluminous top floor living space with high ceilings and abundant natural light space from sizable roof skylights
- Principal bedroom suite with luxurious bathroom and generous walk in dressing room with bespoke wardrobes.
- Spectacular west facing terrace with retractable roof and uninterrupted panoramic views
- Enjoying a discreet and secluded position, very quietly located in a small mews leading from Bermondsey Street
- An exceptional and unrivalled penthouse without comparison.



Bell Yard Mews, London, SE1

Approximate Area = 1943 sq ft / 180.5 sq m

For identification only - Not to scale



Floor plan produced in accordance with RICS Property Measurement Standards incorporating International Property Measurement Standards (IPMS2 Residential). © nichecom 2024. Produced for Daniel Cobb. REF: 1189253



Daniel Cobb

Daniel Cobb Estate Agents, 82-84 Bermondsey Street – SE1 3UD

020 7357 0026 • londonbridge@danielcobb.co.uk • www.danielcobb.co.uk/