



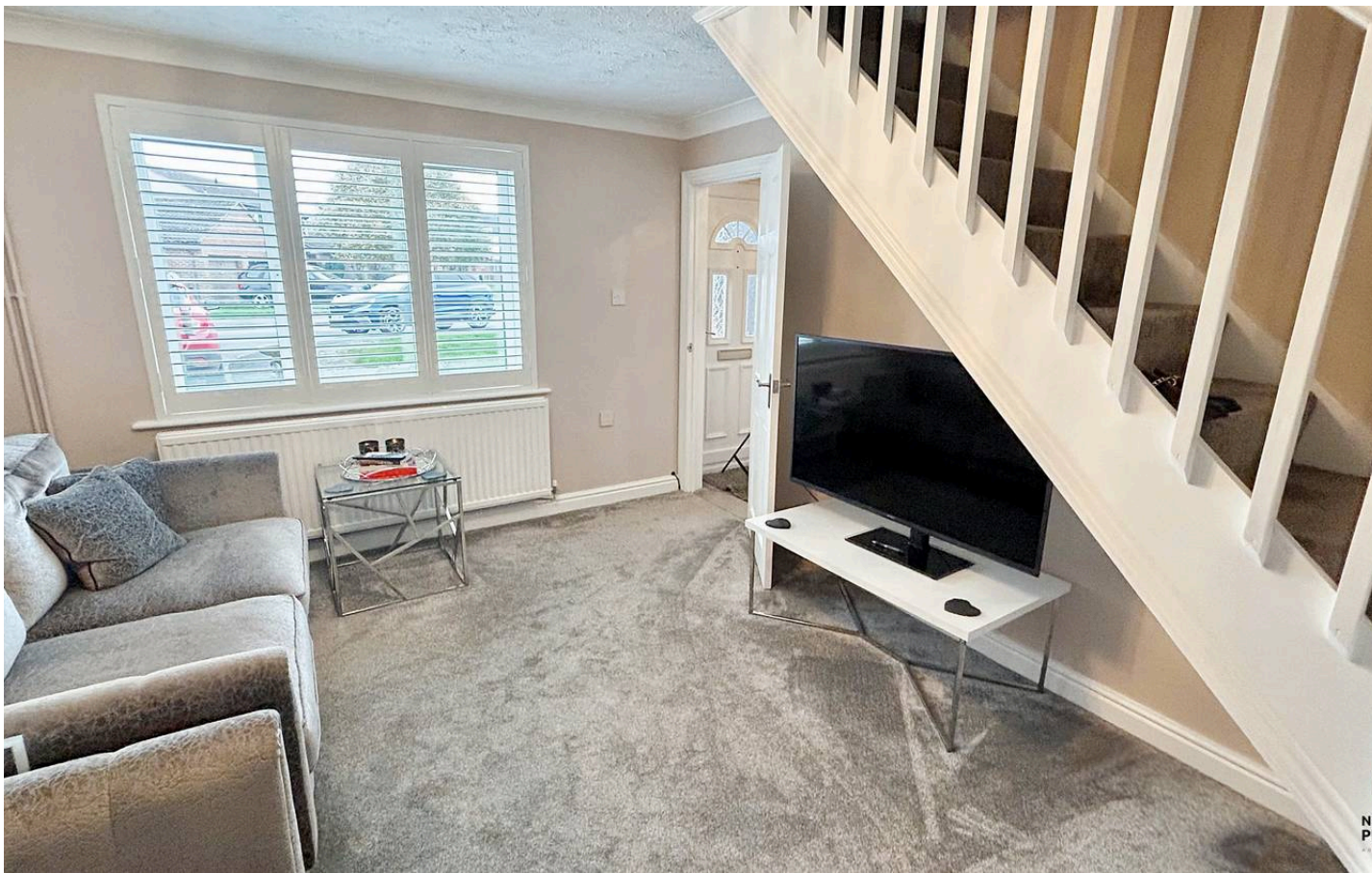
9 Carpenters Way, Doddington  
March



**NEXT LEVEL  
PROPERTY**  
AGENTS THAT CARE

Offers Over £170,000





## 9 Carpenters Way

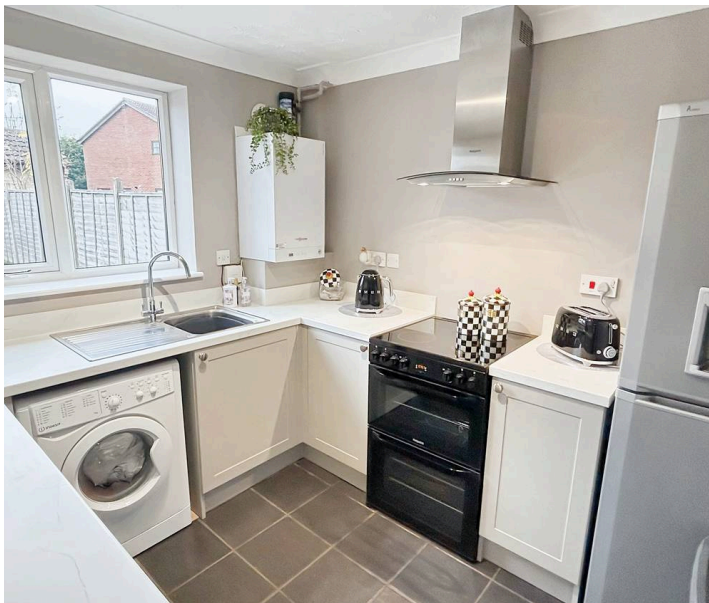
Doddington, March

Charming 2 bed house in sought-after village. Fully renovated in last 2 years, new kitchen & bathroom, under-warranty boiler. Fresh decor, new flooring. Allocated parking, storage area, flexibility in use of lawn. Just a stroll from amenities.

Council Tax band: A

Tenure: Freehold

- Modern home in popular village location
- Fully renovated in the last two years
- Well presented throughout, an ideal first home
- New kitchen & bathroom fitted
- New boiler in 2022 (still under warranty)
- Re-decorated and new flooring throughout
- Allocated parking in adjoining parking area
- Walking distance to village shops, park and school
- No upward chain!



**NEXT LEVEL  
PROPERTY**

AGENTS THAT CARE

### Entrance Hallway

Doors leading off to the bathroom, kitchen and lounge

### Bathroom

A modern white bathroom suite, tiled splashbacks, a heated towel rail and a uPVC double glazed window to the side

### Kitchen

This newly fitted kitchen (2024) has a range of fitted base, drawer and matching wall units. There are spaces for appliances, there is a fitted sink and a wall mounted extractor hood. There is a wall mounted gas boiler (installed 2022) and a uPVC double glazed window to the side.

### Lounge

The lounge has fitted shutters, a uPVC double glazed window to the front and a staircase to the first floor.

### First Floor Landing

uPVC double glazed window to the front and doors that lead off to the bedrooms.

### Bedroom 1

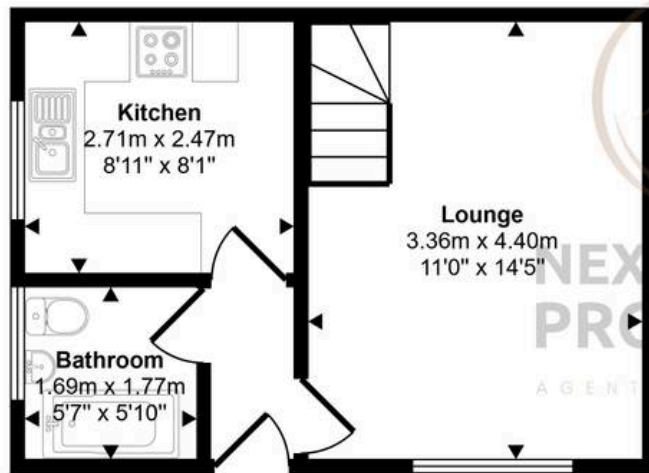
A double bedroom with a uPVC double glazed window to the front

### Bedroom 2

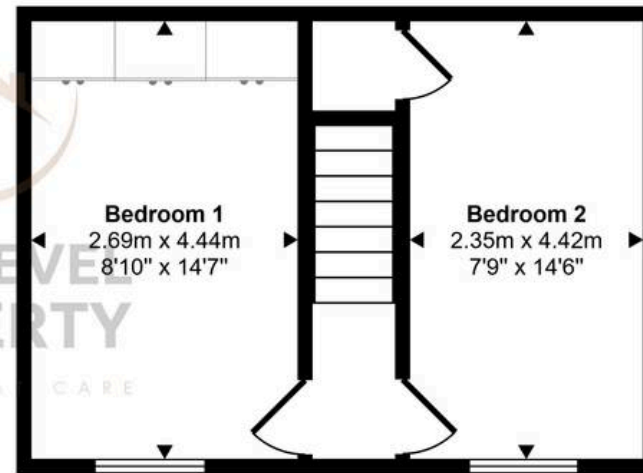
(photo to follow) A double bedroom with a uPVC double glazed window to the front



Approx Gross Internal Area  
55 sq m / 588 sq ft



Ground Floor  
Approx 27 sq m / 294 sq ft



First Floor  
Approx 27 sq m / 294 sq ft

This floorplan is only for illustrative purposes and is not to scale. Measurements of rooms, doors, windows, and any items are approximate and no responsibility is taken for any error, omission or mis-statement. Icons of items such as bathroom suites are representations only and may not look like the real items. Made with Made Snappy 360.



## Next Level Property

8 Juniper Close, Doddington - PE15 0WQ

01354 776180

[info@next-level-property.co.uk](mailto:info@next-level-property.co.uk)

[next-level-property.co.uk](http://next-level-property.co.uk)



**NEXT LEVEL  
PROPERTY**

AGENTS THAT CARE