

Crucible

Homes



Mill Street
Rotherham, S61 4ES

£190,000

Overview

Extremely well presented home

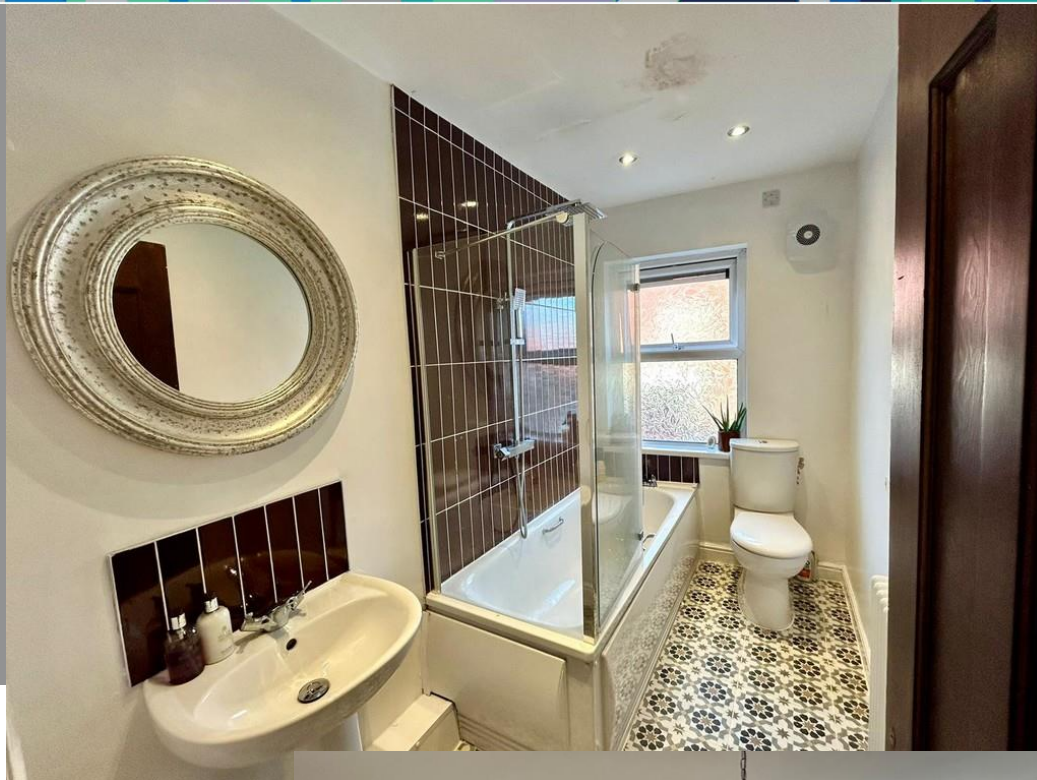
Three bedrooms

Close to local amenities

Two reception rooms

Significantly upgraded by the current owner

Excellent transport links



Description

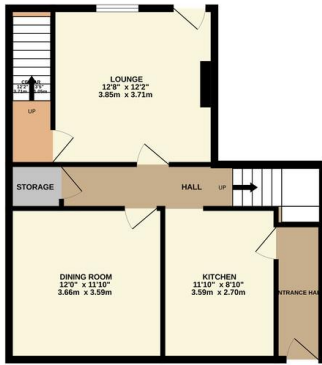
SUMMARY DESCRIPTION Welcome to this generously sized and charming three-bedroom terraced home in Rotherham, offering a superb combination of modern comfort, spacious interiors, and the added benefit of a picturesque location. With meticulously maintained finishes throughout, this property is ideal for first-time buyers, couples, or anyone looking to enjoy the conveniences of contemporary living in a scenic setting.

Upon entry, you'll be welcomed by a spacious, thoughtfully designed layout that optimizes both comfort and functionality. The light-filled living and dining areas provide ample space for relaxation, entertainment, or unwinding at the end of the day. The modern kitchen is a standout, equipped with high-quality appliances, sleek countertops, and extensive storage, making it a practical and stylish space for daily cooking and dining. Additionally, a cellar offers valuable extra storage space.

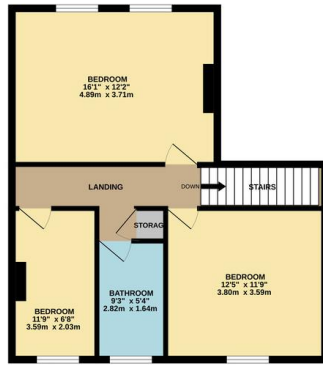
Upstairs, discover three generously sized bedrooms, each presenting a cozy yet expansive retreat. With tasteful decor and large windows, these rooms are bright and airy, creating an inviting ambiance perfect for restful nights or personalized spaces. The modern family bathroom complements the home's contemporary design, featuring quality fixtures and a streamlined, polished look.



GROUND FLOOR
565 sq.ft. (52.5 sq.m.) approx.



1ST FLOOR
563 sq.ft. (52.3 sq.m.) approx.



TOTAL FLOOR AREA: 1128 sq.ft. (104.8 sq.m.) approx.
 Whilst every attempt has been made to ensure the accuracy of the floorplan contained herein, measurements of blocks, windows, doors and any other items are approximate and no responsibility is taken for any error, omission or mis-statement. This plan is for illustrative purposes only and should be used as such by any prospective purchaser. The services, systems and appliances shown have not been tested and no guarantee as to their operability or efficiency can be given.
 Made with Metropix ©2022

Score	Energy rating	Current	Potential
92+	A		
81-91	B		88 B
69-80	C		
55-68	D	66 D	
39-54	E		
21-38	F		
1-20	G		

A unique highlight of this property is its prime location. Positioned just moments away from scenic countryside trails and the renowned Wentworth Woodhouse—one of the UK's grandest stately homes—this home allows for easy access to picturesque walks, weekend excursions, and the historic allure of a beloved local attraction. Whether you're exploring Wentworth's expansive gardens or enjoying tranquil country walks, the surrounding area offers an exceptional quality of life with a strong connection to nature.

With its harmonious blend of modern interiors, a spacious layout, and proximity to Rotherham's stunning countryside and historical sites, this property presents a remarkable lifestyle opportunity. Whether you're seeking your first home or downsizing into a comfortable, well-situated residence, this home offers everything needed to create lasting memories. Don't miss the chance to make this exceptional property your own!



