

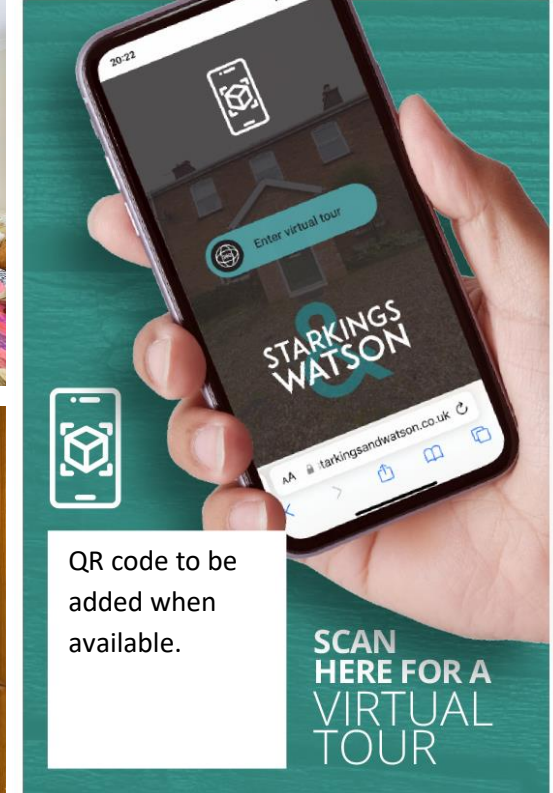
CHAPELFIELD

Freethorpe, Norwich NR13 3LY

Energy Efficiency Rating : D

To arrange an accompanied viewing please pop in or call us on 01603 336226

PROPERTY TO LET



QR code to be added when available.

SCAN
HERE FOR A
VIRTUAL
TOUR

arla | propertymark
PROTECTED

naea | propertymark
PROTECTED

The Property
Ombudsman

For our full list of available properties, or for a FREE INSTANT online valuation visit

starkingsandwatson.co.uk



STARKINGS & WATSON

- Rural Village Setting with Field Views
- Extended Detached Bungalow
- Bay Fronted Sitting Room
- Three Bedrooms
- Large Bathroom with Separate Shower
- Kitchen/Dining Room with Utility Space
- Garden Room
- Private Non-Overlooked Gardens

IN SUMMARY

This EXTENDED and DETACHED BUNGALOW offers over 1100 Sq. ft (stms) of accommodation, with PRIVATE NON-OVERLOOKED GARDENS which back onto a FIELD. Having been WELL MAINTAINED over the years, the property enjoys a SUBSTANTIAL PLOT with ample PARKING and an adjoining GARAGE. Various upgrades including WOOD FLOORING and NEW WINDOWS, whilst the accommodation includes a HALL ENTRANCE, bay fronted SITTING ROOM, three bedrooms with one currently used as an IDEAL STUDY, LARGE BATHROOM with separate SHOWER, open plan KITCHEN/DINING ROOM with utility space, and further garden room beyond. The GARDENS have been FULLY STOCKED and include a wildlife pond, lawns, patio and TIMBER SUMMER HOUSE.

SETTING THE SCENE

From the road, a hard standing driveway offers tandem parking, with adjacent lawned gardens screened with mature hedging, shrubbery and trees. With open fields to front, the front garden offers a perfectly usable space, with a raised bed and patio

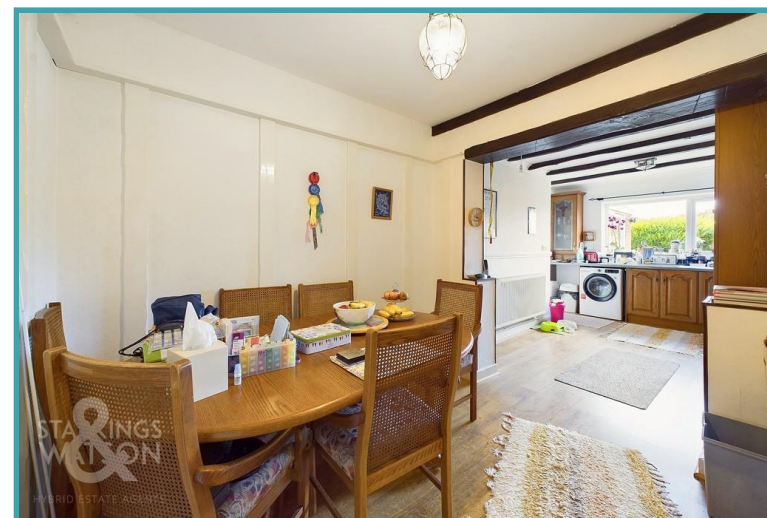
area to front. Access leads to the garage and main property.

THE GRAND TOUR

Heading inside, wood flooring runs underfoot, with built-in storage cupboards to one side. The first door on your right is the sitting room, with a feature fireplace and woodburner, bay window to front and wood flooring underfoot. This spacious room offers attractive views over the front gardens, and French doors could be installed allowing direct access to the front patio. The bedrooms are all located off the hall, one facing to front, the second to side, and the main bedroom to rear - with a range of built-in bedroom furniture. The family bathroom is extended and includes space for a four piece suite - allowing for a separate bath and shower cubicle. The kitchen/dining room is also extended, with space for a table, and ample built-in storage, integrated cooking appliances, and space for white goods. A utility space which offers further storage of white goods provides access to the garden room. with views over the garden and a door to rear.

THE GREAT OUTDOORS

The rear garden offers a wealth of planting, with a central grass area, range of planting and a feature shingle bed with a recessed wildlife pond. A timber shed offers storage, whilst there is gated access to front, outside water supply, oil fired central heating boiler and tank, along with a timber summer house. The garden is enclosed with timber panelled fencing.



To arrange an accompanied viewing please call our Centralised Hub on **01603 336116**



OUT & ABOUT

Situated in the heart of Freethorpe, the village is located to the East of Norwich with local facilities including public house, church and school. There is access close by to the A47 and the larger village of Acle which has a more comprehensive range of amenities including village shops, schools and train station.

FIND US

Postcode : NR13 3LY

What3Words : ///mondays.pushing.syndicate

VIRTUAL TOUR

View our virtual tour for a full 360 degree of the interior of the property.

Disclaimer: Whilst every care has been taken to prepare these sales particulars, they are for guidance purposes only. All measurements are approximate are for general guidance purposes only and whilst every care has been taken to ensure their accuracy, they should not be relied upon and potential buyers are advised to recheck the measurements.

Price:



For our full list of available properties, or for a FREE INSTANT online valuation visit

starkingsandwatson.co.uk

Approximate total area⁽¹⁾
114.85 ft²
103.57 m²

(1) Excluding balconies and terraces

GIRAFFE360
While every attempt has been made to ensure accuracy, all measurements are approximate, not to scale. This floor plan is for illustrative purposes only.

