



HINTON
residential

SALES, LETTINGS & MANAGEMENT

Boxtree Road

Harrow HA3 6TG

- One bedroom apartment
- Brand new build
- Large bathroom
- Share of freehold

Asking Price Of £300,000

EPC Rating '83'





Property Description

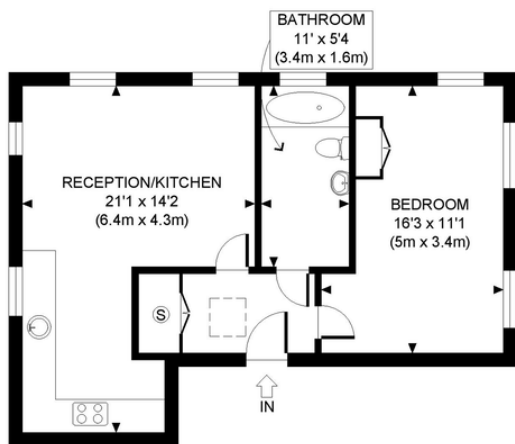
A BRAND NEWLY BUILT ONE BEDROOM APARTMENT WITH SHARE OF FREEHOLD located on a highly sought after road within close proximity to the amenities of the High Road and Harrow Weald Bus Garage. The property is being offered to the market with no upper chain, internal inspection strongly advised.

The apartment comprises; a large open plan reception room with fitted wrap around kitchen, a very good sized bathroom tiled floor to ceiling and a spacious double bedroom with fitted wardrobes.

We have been advised the service charge is approximately £1,260 per annum including buildings insurance.



Score	Energy rating	Current	Potential
92+	A		
81-91	B	83 B	83 B
69-80	C		
55-68	D		
39-54	E		
21-38	F		
1-20	G		



SECOND FLOOR
GROSS INTERNAL
FLOOR AREA 519 SQ FT

APPROX. GROSS INTERNAL FLOOR AREA: 519 SQ FT/ 48 SQM

PROPERTY PHOTO PLANS.CO.UK
ONE STOP SHOP FOR PROPERTY MARKETING

This plan is for illustrative purposes only and should be used as such by any prospective client. Whilst every attempt has been made to ensure the accuracy of the Floor Plan contained here, measurements of the doors, windows, rooms and any other items are approximate and no responsibility is taken for any errors, omissions, or misstatement. The services, systems and appliances shown have not been tested and no guarantee as to the operability or efficiency can be given.

399 High Road
Harrow
Middlesex
HA3 6EL

www.hintonresidential.com
sales@hintonanddownes.com
0208 861 1066

Agents Note: Whilst every care has been taken to prepare these sales particulars, they are for guidance purposes only. All measurements are approximate are for general guidance purposes only and whilst every care has been taken to ensure their accuracy, they should not be relied upon and potential buyers are advised to recheck the measurements