



14 Holloway Close, Swindon
Swindon

Offers Over **£450,000**

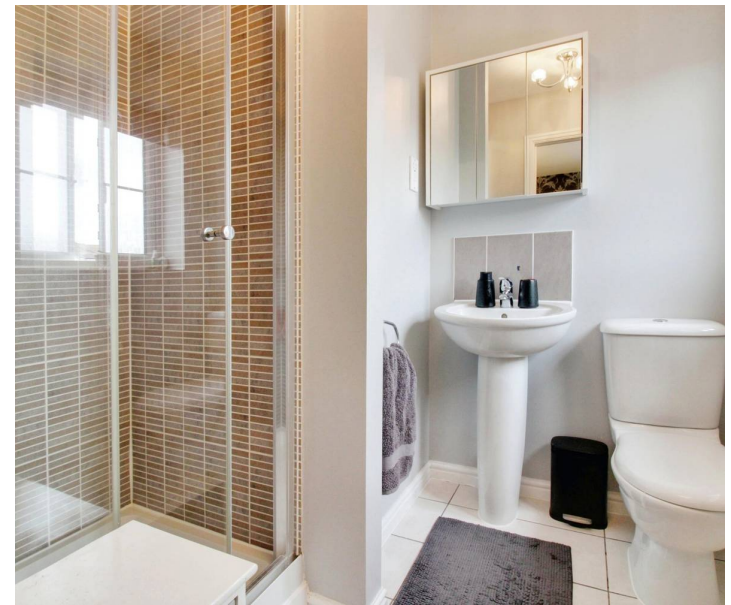


14 Holloway Close

Swindon, Swindon

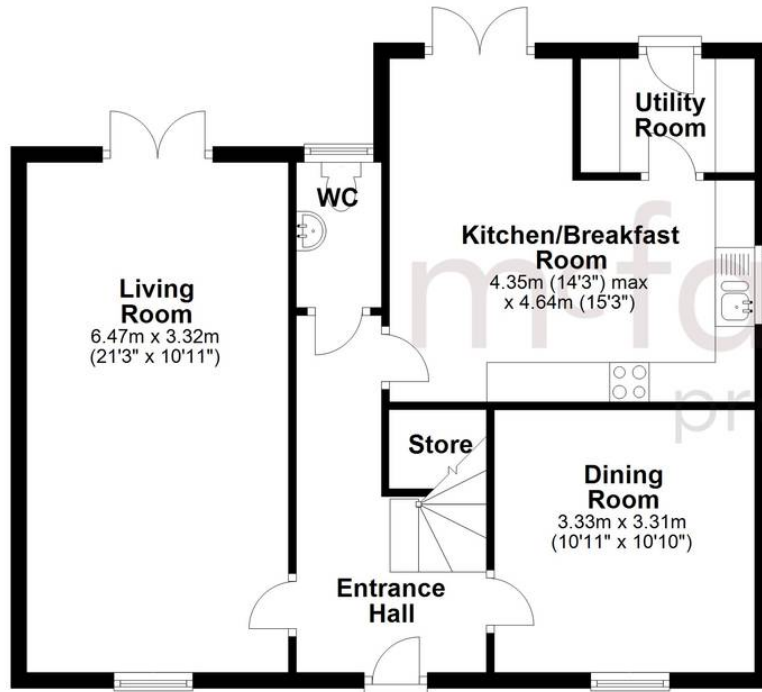
An immaculately presented four bedroom detached family home. This property has fantastic ground floor space including a beautiful open plan kitchen breakfast room with French doors to the garden, a dual aspect living room with further French doors to the garden, an additional reception room as well as a utility room and WC. On the first floor there are four fantastic sized bedrooms and a family bathroom. Bedroom one benefits from an en-suite shower room. Externally the property offers a low maintenance, generously sized rear garden with side access and access to the garage. There is also driveway parking in front of the garage. Council Tax Band E - Estimated cost £2015 p.a.





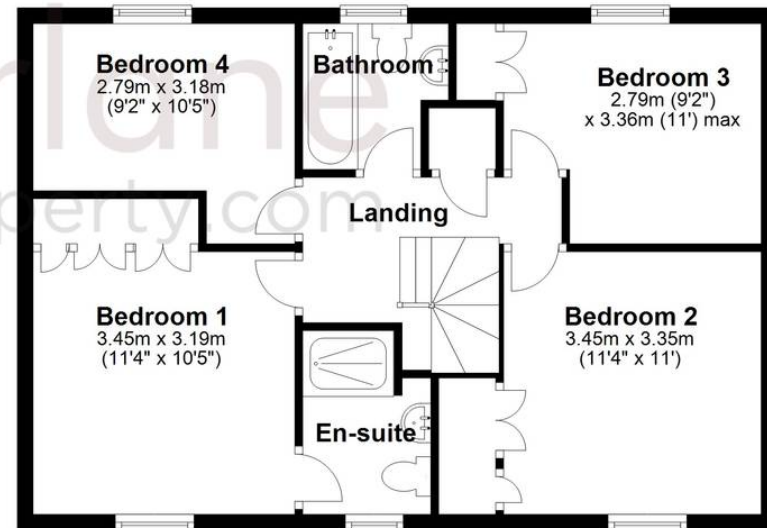
Ground Floor

Approx. 66.4 sq. metres (714.6 sq. feet)



First Floor

Approx. 59.8 sq. metres (643.7 sq. feet)



Total area: approx. 126.2 sq. metres (1358.3 sq. feet)

North Swindon Sales

North Swindon, Redhouse Village Centre, Swindon - SN25 2FW

01793 296600 • swindon@mcfarlaneproperty.com • www.mcfarlaneproperty.com/