



**Clayton End Terrace, Sillars Green, Tetbury Road**

Malmesbury

**£394,995**

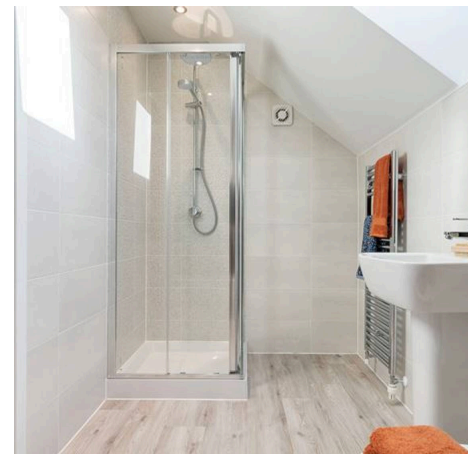
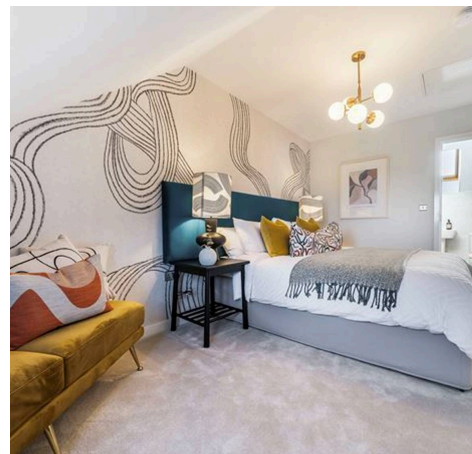
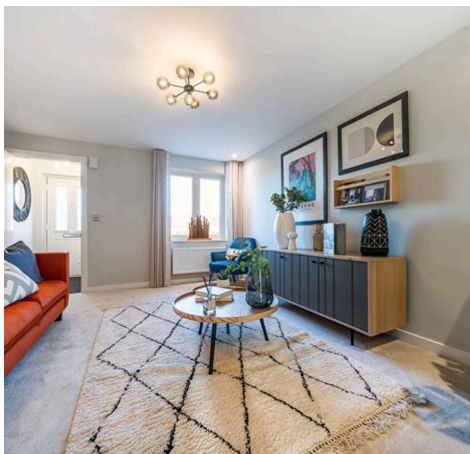


## Clayton End Terrace, Sillars Green

Tetbury Road, Malmesbury

Nestled within a sought-after neighbourhood, this stunning 3-bedroom end of terrace house offers the epitome of modern living. Impeccably designed, this new-build property boasts contemporary features, including solar panels that epitomise energy efficiency. Upon entering, you are greeted by a bright and spacious reception room, perfect for entertaining guests or unwinding after a long day. The property further impresses with a thoughtfully designed kitchen, complete with high-quality fixtures and fittings. The master bedroom features an en-suite bathroom for added privacy and convenience, while two additional bedrooms offer ample space for guests or a growing family. The property also benefits from a utility room, and a WC for added convenience. A single garage and parking space complete this exceptional property, making it a home that truly caters to all your needs and desires.

- NEW BUILD
- SOLAR PANELS
- LARGE RECEPTION
- SINGLE GARAGE
- PARKING SPACE
- EN-SUITE TO MASTER
- THREE BEDROOMS
- UTILITY ROOM
- WC
- END TERRACE



**Entrance Hall**

**Living Room**

18' 6" x 10' 3" (5.63m x 3.13m)

**Kitchen/Dining Room**

18' 6" x 9' 5" (5.63m x 2.86m)

**Utility**

**WC**

**Landing**

**Bedroom 1**

18' 6" x 10' 5" (5.63m x 3.17m)

**En-Suite**

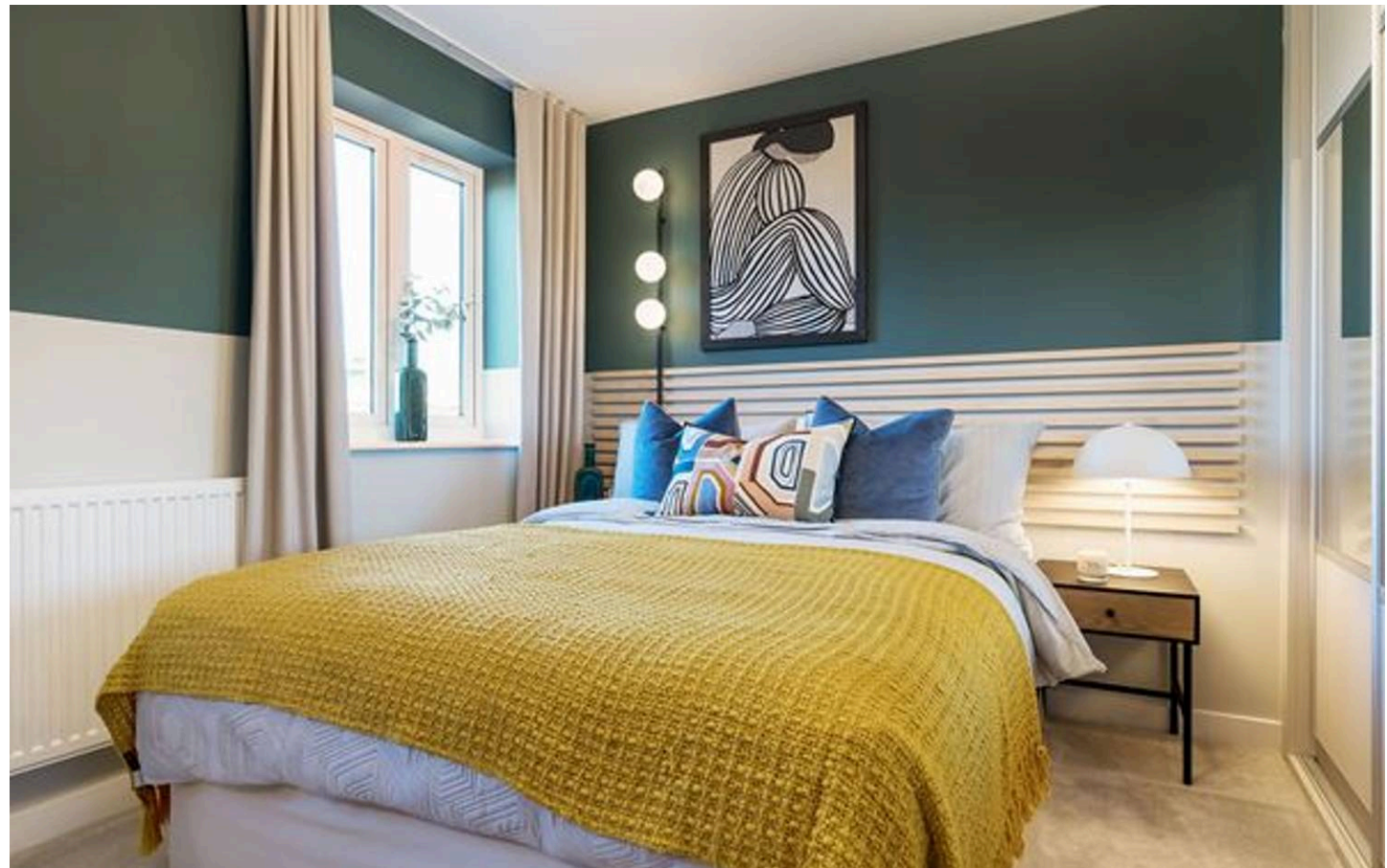
**Bedroom 2**

10' 8" x 9' 2" (3.24m x 2.80m)

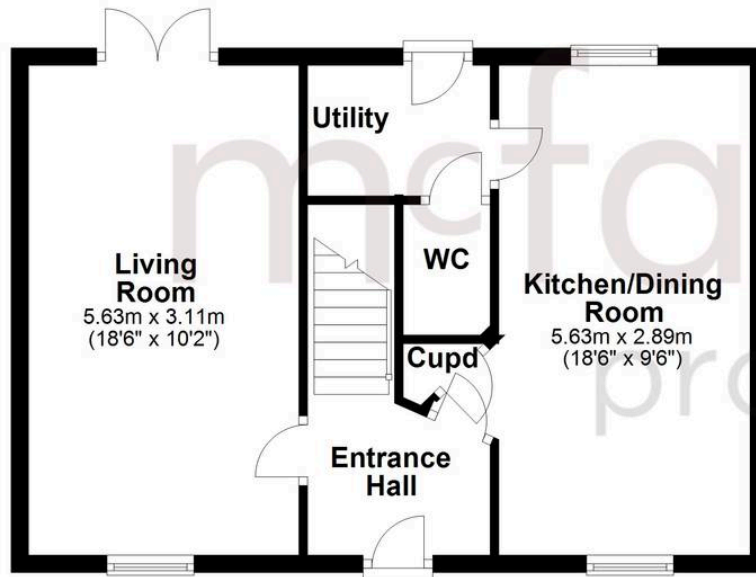
**Bedroom 3**

7' 7" x 9' 2" (2.30m x 2.80m)

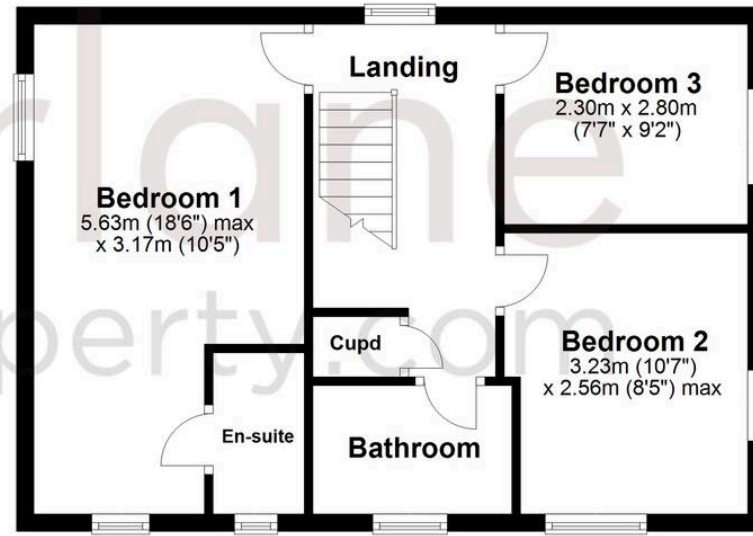
**Bathroom**



**Ground Floor**



**First Floor**



## McFarlane Sales & Lettings

North Swindon, Redhouse Village Centre, Swindon - SN25 2FW

01793 296600 • [swindon@mcfarlaneproperty.com](mailto:swindon@mcfarlaneproperty.com) • [www.mcfarlaneproperty.com/](http://www.mcfarlaneproperty.com/)