



Eastview Close, Stow On The Wold



This three-double-bedroom Cotswold stone terraced house blends charm with modern comforts was Constructed in 2017 by the esteemed Spitfire Homes and has three years remaining on its 10-Year Premier Guarantee Warranty, the property offers spacious and well-appointed interiors. The entrance hall, featuring an engineered oak floor, opens to a cloakroom and leads into both the cozy lounge and the open-plan kitchen/dining area. The sitting room boasts a gas log-burning stove, creating a warm, inviting atmosphere. The kitchen and dining room serve as the heart of the home, showcasing hand-painted oak cabinetry, quartz countertops, and top-quality integrated appliances, including a double oven with microwave, induction hob with extractor, dishwasher, fridge, and freezer. Double doors open onto the rear terrace, ideal for outdoor dining and entertaining. Adjacent to the kitchen is a convenient utility room with additional fitted units and an exterior door.

Upstairs, the principal bedroom offers a fully fitted wardrobes and an en suite with a spacious double shower. Two further double bedrooms and a modern family bathroom, complete with both a bath and a separate shower, provide comfort and flexibility. The home also includes a fully insulated loft with lighting and a ladder for added storage.

Outside, the south-facing garden offers a beautifully landscaped, low-maintenance retreat, complete with a terrace surrounded by raised flower borders and mature shrubs. Access is also available through a rear gate. A handsome double-car barn enhances the property's appeal, providing ample covered parking.

EPC: B

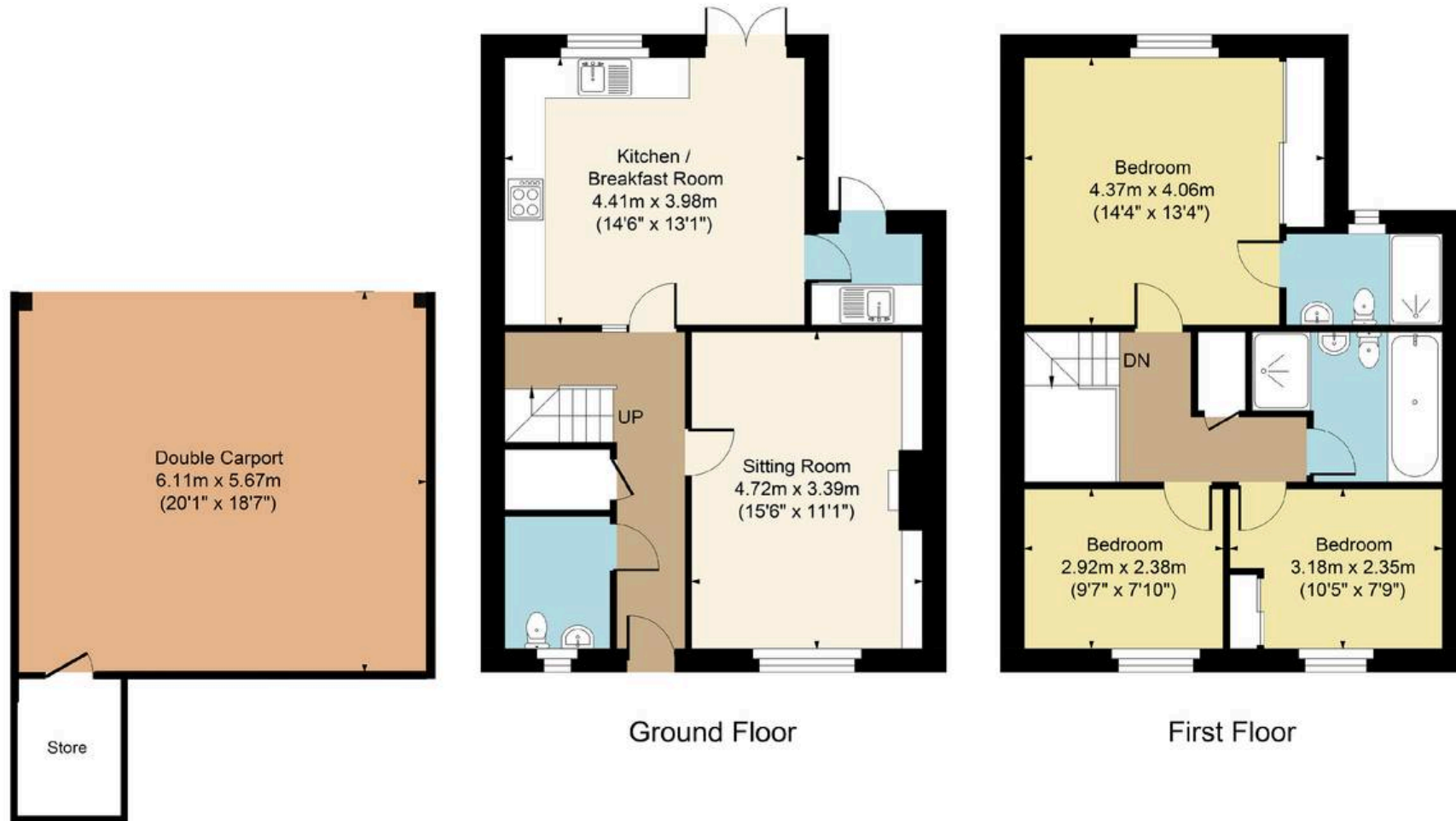
Council Tax Band: D

Tenure: We believe the property to be **Freehold**. Potential purchasers should obtain confirmation of this from their solicitor prior to exchange of contracts.





Main House Approx. Gross Internal Area:- 99.00 sq.m. 1066 sq.ft.
Carport Approx. Gross Area:- 34.64 sq.m. 373 sq.ft.
Total Approx. Gross Area:- 133.64 sq.m. 1439 sq.ft.



FOR ILLUSTRATIVE PURPOSES ONLY-NOT TO SCALE
The position & size of doors, windows, appliances and other features are approximate only.
□□□ Denotes restricted head height
www.dmlphotography.co.uk