



**35 International House, Don Road, St Helier**

**£335,000**

**BROADLANDS**

FINDING YOU A HOME SINCE 1972

# 35 International House Don Road

St Helier

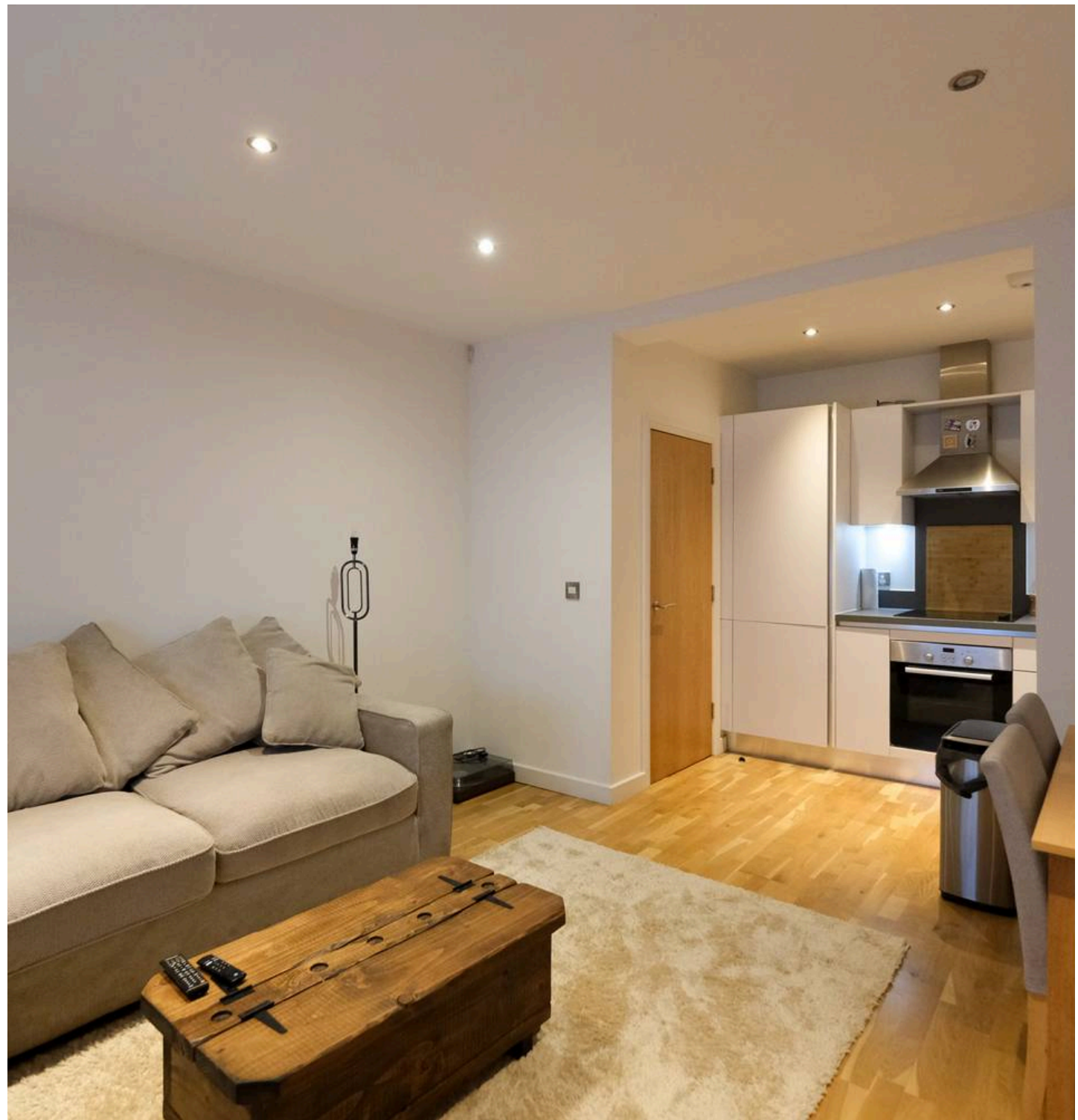
- Modern purpose built apartment
- Spacious open plan living area
- Fully fitted kitchen
- One good size double bedroom
- Modern house bathroom
- Great first home or buy to let
- Walk to work
- Please contact Ciara 07797960571 / [ciara@broadlandsjersey.com](mailto:ciara@broadlandsjersey.com)



## 35 International House Don Road

St Helier

Modern purpose built one bedroom apartment on the outskirts of town. The apartment comprises; open plan living area with fully fitted kitchen, one good size double bedroom, modern house bathroom and good size utility/storage cupboard. Convenient location just minutes from town, a great first home or buy to let.



**Living**

Large open plan living area with fully integrated kitchen. Store room.

**Sleeping**

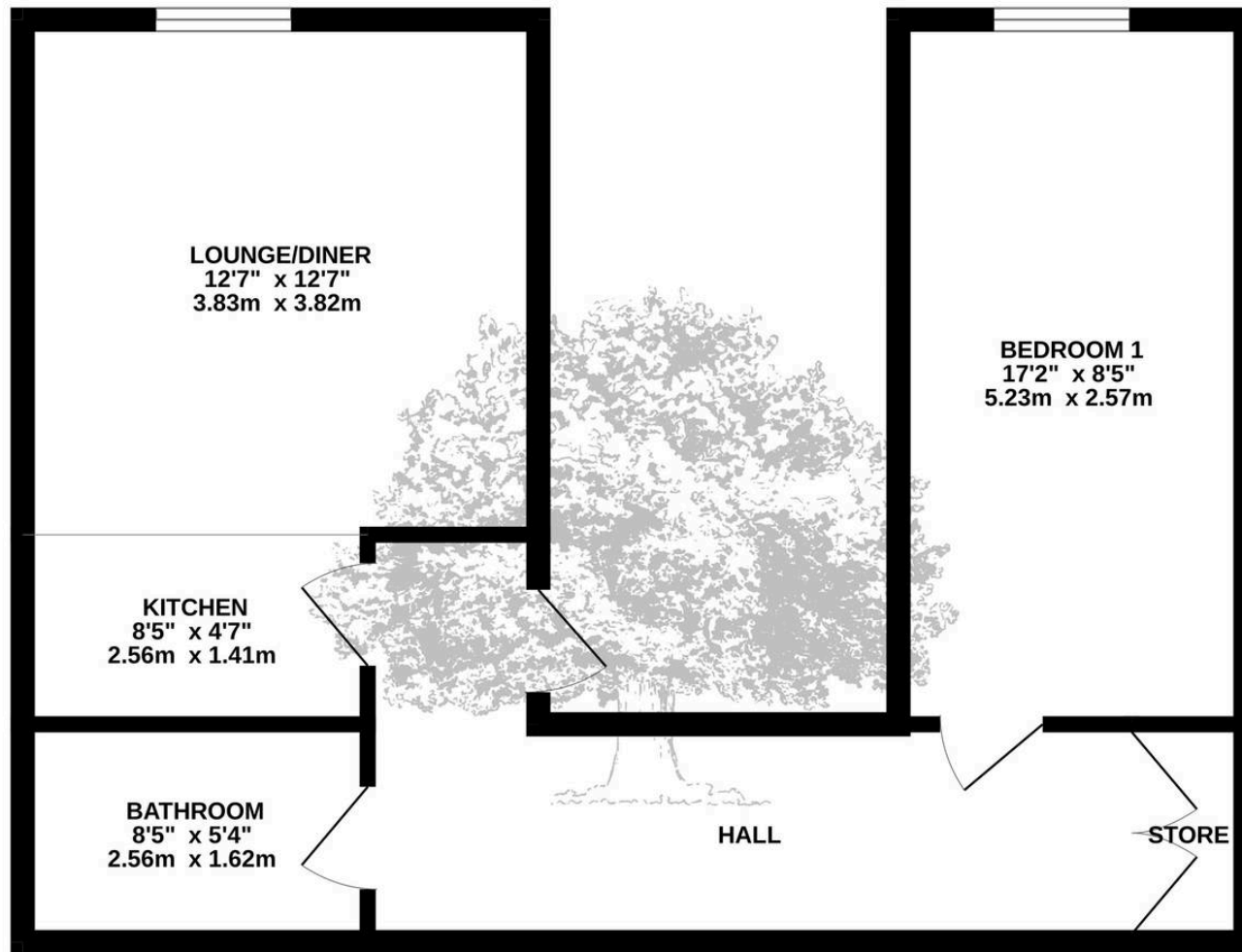
One good size double bedroom and house bathroom.

**Services**

All main services. Electric heating and double glazing. Service charges £1,159.12 per annum (£96.60pm).



**GROUND FLOOR**  
568 sq.ft. (52.8 sq.m.) approx.



TOTAL FLOOR AREA : 568 sq.ft. (52.8 sq.m.) approx.

Whilst every attempt has been made to ensure the accuracy of the floorplan contained here, measurements of doors, windows, rooms and any other items are approximate and no responsibility is taken for any error, omission or mis-statement. This plan is for illustrative purposes only and should be used as such by any prospective purchaser. The services, systems and appliances shown have not been tested and no guarantee as to their operability or efficiency can be given.

Made with Metropix ©2024



## Broadlands

Broadlands Estates, Library Place - JE2 3NL

01534 880770 • [enquiries@broadlandsjersey.com](mailto:enquiries@broadlandsjersey.com) • [www.broadlandsjersey.com/](http://www.broadlandsjersey.com/)

# BROADLANDS

FINDING YOU A HOME SINCE 1972