



**Valletort Road, Plymouth, PL1 5PN**

**£160,000 LEASEHOLD EPC: C**





## Valletort Road

Plymouth, PL1 5PN

Chic top-floor apartment in city centre with 2 double bedrooms, integrated kitchen, stylish bathroom, balcony, parking, and ample storage. Ideal for first-time buyers or buy-to-let investors. Book a viewing now!

Council Tax band: B

Tenure: Leasehold

- Two Double Bedroom Top Floor Apartment
- Spacious Integrated Kitchen
- Three Piece Bathroom Suite
- Balcony
- Parking Space
- Large Hallway Cupboards
- First Time Buy Potential
- Buy to Let Potential



# Valletort Road

Plymouth, PL1 5PN

Step into this stunning top-floor apartment, boasting two spacious double bedrooms in the heart of the city. Thoughtfully designed integrated kitchen and a stylish three-piece bathroom suite. The balcony offers a serene spot to unwind and enjoy the city views after a long day. With the convenience of a parking space and large hallway cupboards, storage is never an issue here.

Ideal for first-time buyers looking for a chic urban retreat or savvy investors seeking a lucrative buy-to-let opportunity, this property offers endless possibilities.

Contact us today to schedule a viewing and make this apartment yours.

## Tenure & Services

**Council Tax band:** B

**Tenure:** Leasehold

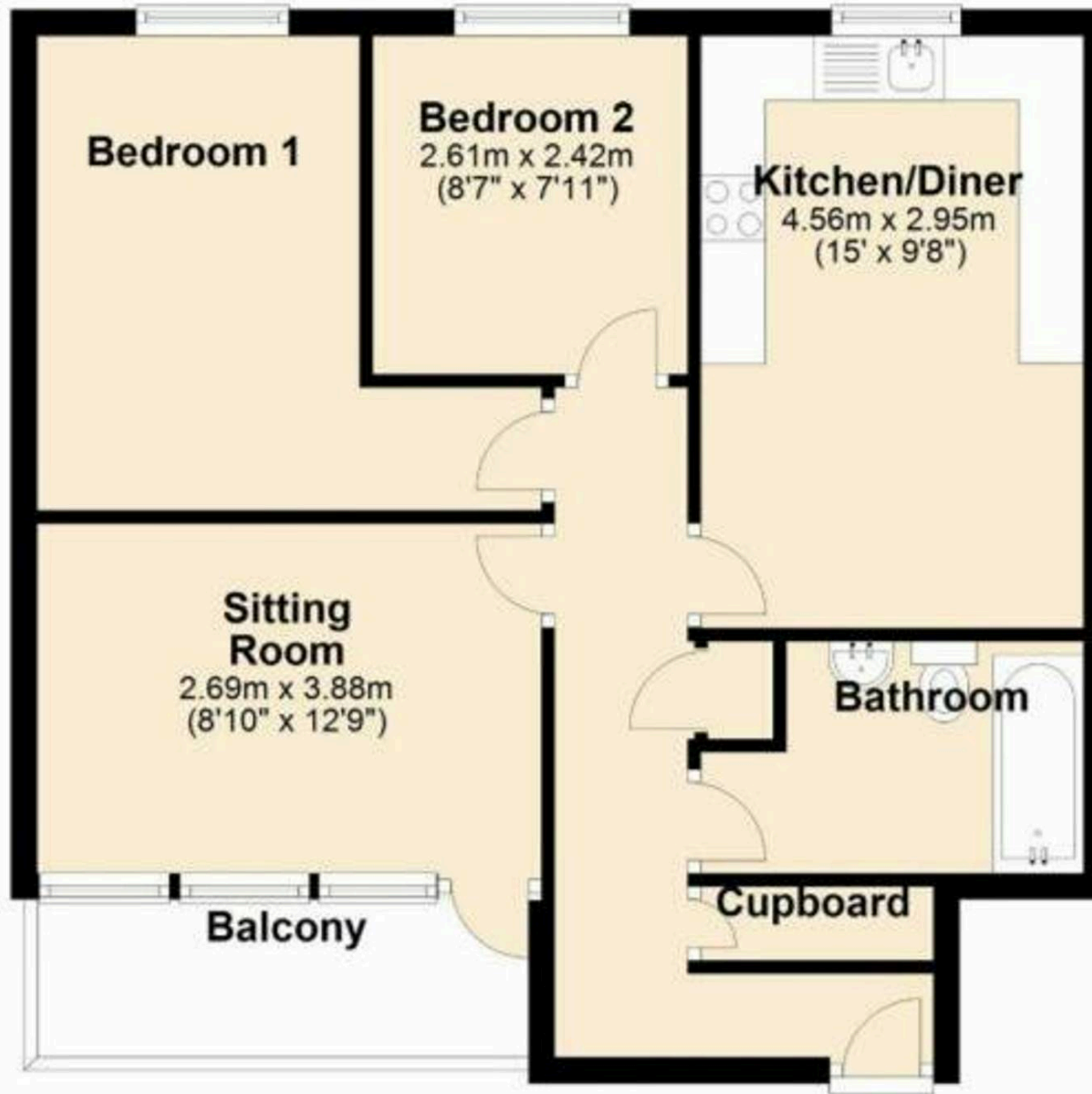
**Service Charge:** £1300 per annum

**Ground Rent:** £225 per annum

**Lease Expiry:** 11/11/2149



## Ground Floor



Floor Plans are for guidance purposes only - although we make every attempt to show them accurately they should not be used for planning purposes.

Plan produced using PlanUp.



## Atwell Martin

Atwell Martin, 65 Southside Street - PL1 2LA

01752 202121

[plymouthsales@atwell-martin.co.uk](mailto:plymouthsales@atwell-martin.co.uk)

[plymouth.atwellmartin.co.uk/](http://plymouth.atwellmartin.co.uk/)

Atwell Martin Plymouth endeavour to ensure the accuracy of property details produced and displayed. Please note that we have not tested any apparatus, equipment, fixtures, fittings or services and so cannot verify that they are connected, in working order or fit for purpose. It is imperative that the buyer of any property makes such checks, prior to purchase so as to satisfy themselves of the properties suitability for their purchase..

