



9 Parsonage Way, Plymouth, PL4 0LY

£575,000 LEASEHOLD







## Queen Anne's Quay

9 Parsonage Way, Plymouth

Luxurious 4-bed Penthouse at Queen Anne's Quay with panoramic views of Plymouth Sound. Open-plan layout, extensive terrace, en-suite master bedroom, garaged parking. Prime location near historic Barbican. Contact us to schedule a private viewing.

Council Tax band: F

Tenure: Leasehold

- A four bedroom Penthouse Apartment situated in the gated Queen Annes Quay development
- Large Lounge and open plan kitchen
- An extensive terrace offering wonderful views toward Plymouth Sound
- Views over Sutton Harbour, The Barbican, The Royal Citadel and Plymouth Hoe, Drakes Island and The Rame Peninsular, Mountbatten Watersports Centre and over the Cattewater to the West
- The property is serviced via both stairwell and lift off a shared landing.
- The apartment is conveniently situated for ease of access to all local amenities, and is only a short walk away from Plymouth's historic Barbican via the Sutton Harbour footbridge
- Two additional Car Parking Spaces are available by separate negotiation
- Garaged Parking for one vehicle





# Queen Anne's Quay

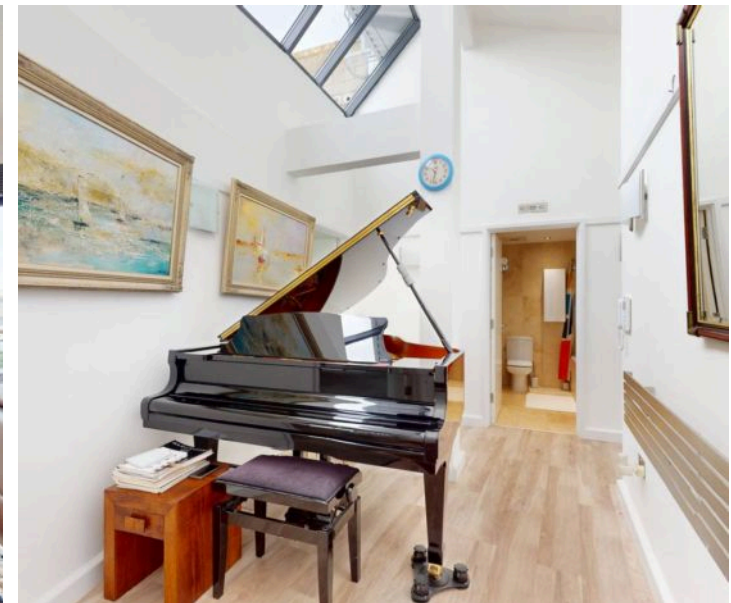
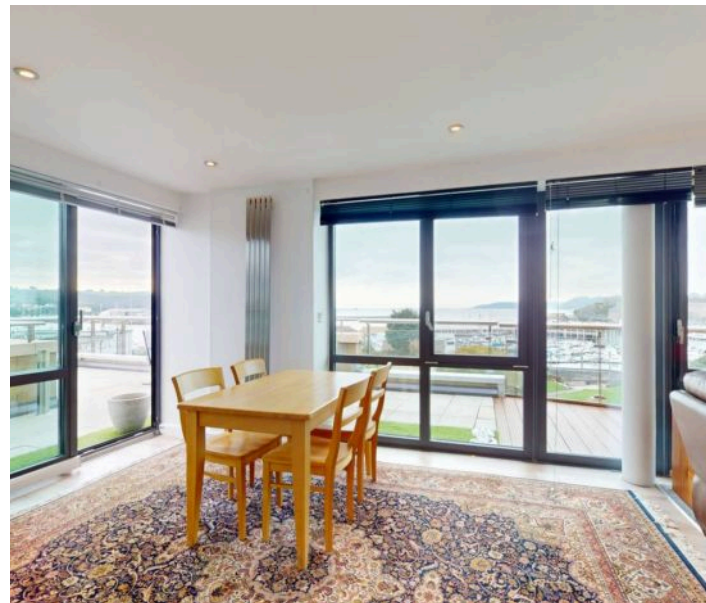
9 Parsonage Way, Plymouth

Welcome to a luxurious lifestyle at Queen Anne's Quay, where grandeur meets unparalleled comfort in this exquisite four-bedroom Penthouse Apartment. Envisioned by a renowned developer, this residence epitomises modern living with its sophisticated design and breathtaking views over Plymouth Sound and its surroundings.

As you step into this meticulously crafted penthouse, you are greeted by a large lounge that seamlessly transitions into an open-plan kitchen, perfect for entertaining guests and creating lasting memories. The layout is designed to maximise space and natural light, creating an ambience of serenity and elegance throughout.

The heart of this home lies in its extensive Sun terrace, offering panoramic views that stretch from Sutton Harbour to The Barbican, The Royal Citadel, and Plymouth Hoe. From Drakes Island to The Rame Peninsular, every glance captures the essence of coastal living at its finest. The Sun terrace invites you to indulge in al-fresco dining or simply unwind while taking in the mesmerising sunset over the Cornish hills to the West.

This prestigious penthouse boasts Four double bedrooms, each designed to provide a sanctuary of comfort and privacy. The master bedroom with its en-suite bathroom offers a retreat from the hustle and bustle of every-day life, while the additional bedrooms provide versatility for guests or a home office, all complemented by luxurious fittings and fixtures.

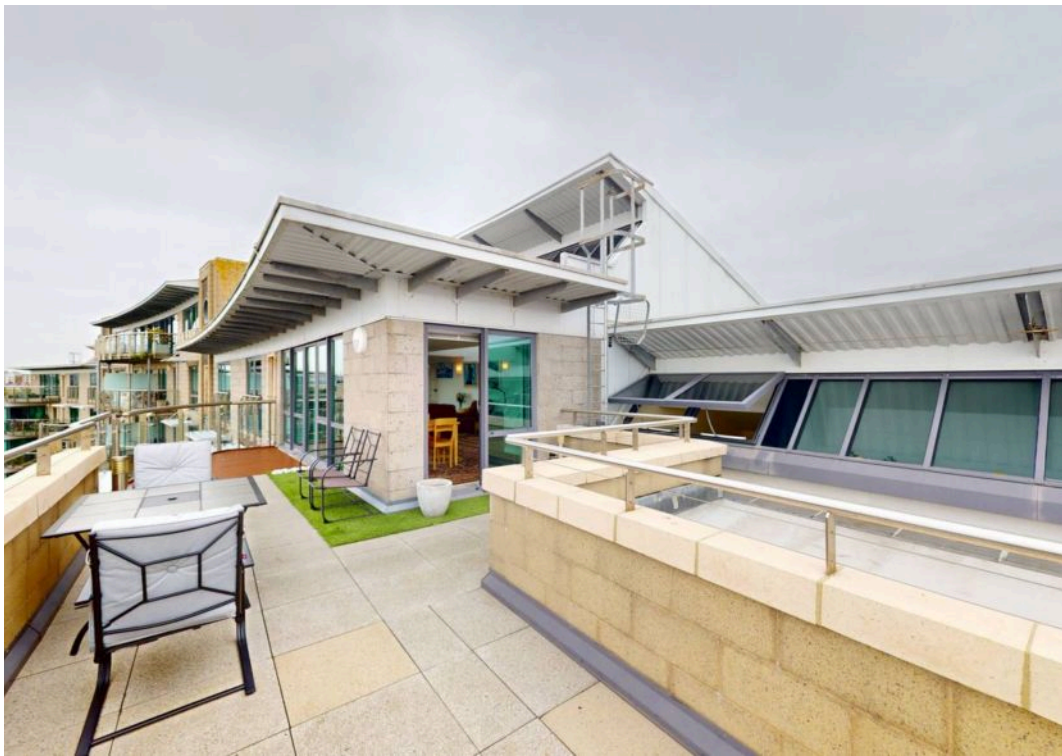


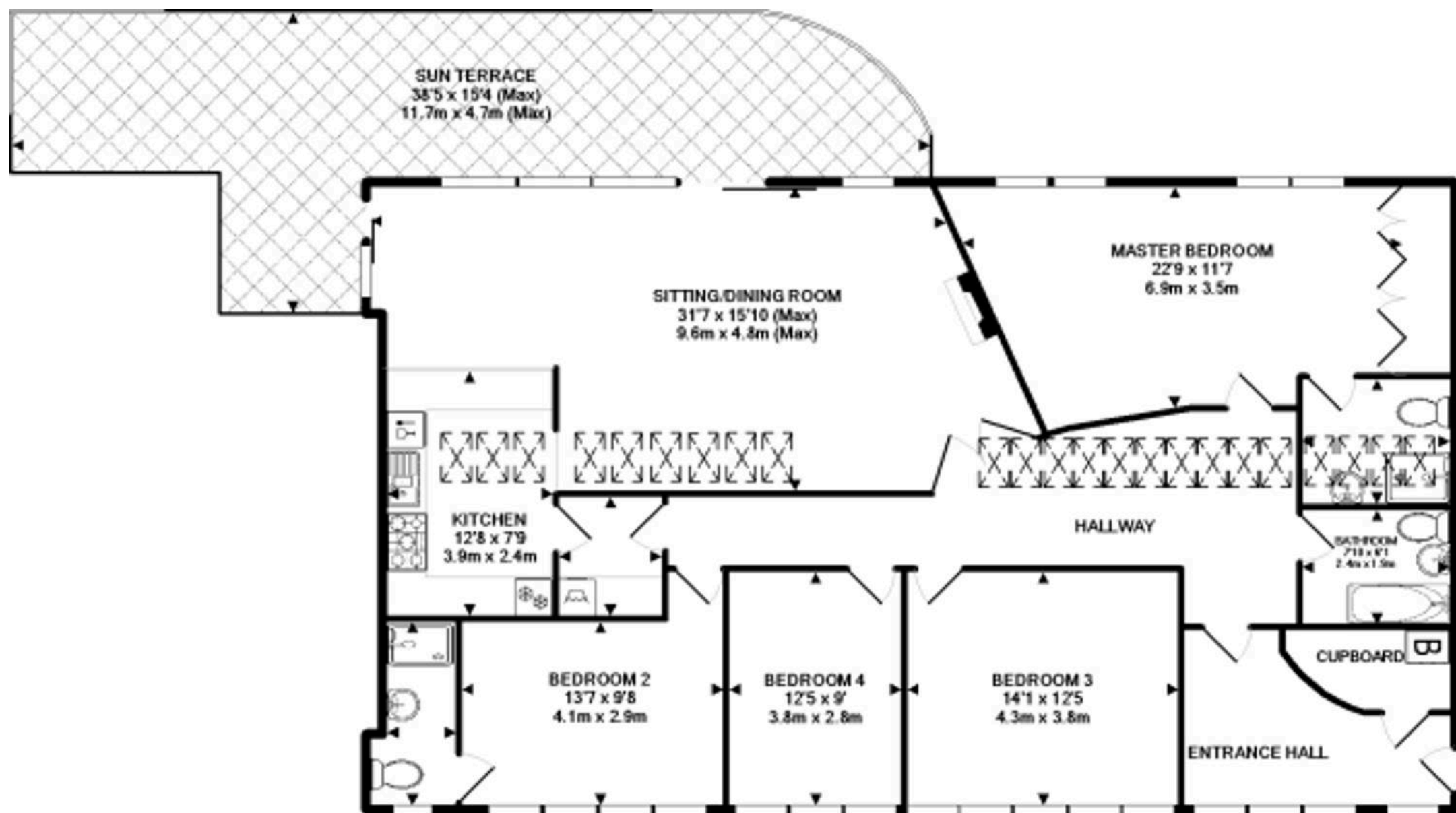












**TOTAL APPROX. FLOOR AREA 1738 SQ.FT. (161.5 SQ.M.)**

Whilst every attempt has been made to ensure the accuracy of the floor plan contained here, measurements of floors, windows, rooms and any other items are approximate and no responsibility is taken for any error, omission, or mis-statement. This plan is for illustrative purposes only and should be used as such by any prospective purchaser. The services, systems and appliances shown have not been tested and no guarantee as to their operability or efficiency can be given.

Made with Metropix ©2014





## Atwell Martin

Atwell Martin, 65 Southside Street – PL1 2LA

01752 202121

[plymouthsales@atwell-martin.co.uk](mailto:plymouthsales@atwell-martin.co.uk)

[plymouth.atwellmartin.co.uk/](http://plymouth.atwellmartin.co.uk/)

Atwell Martin Plymouth endeavour to ensure the accuracy of property details produced and displayed. Please note that we have not tested any apparatus, equipment, fixtures, fittings or services and so cannot verify that they are connected, in working order or fit for purpose. It is imperative that the buyer of any property makes such checks, prior to purchase so as to satisfy themselves of the properties suitability for their purchase. .



