



**Ground Floor Flat, Pounds Park Road, Plymouth, PL3 4QP**

**£150,000 SHARE OF FREEHOLD EPC: TBC**

**ATWELL  
MARTIN**  
ESTATE AGENTS



## Ground Floor Flat

Pounds Park Road, Plymouth, PL3 4QP

Ground floor apartment near city centre with a cosy double bedroom. Features charming fireplace, ample storage, and tranquil courtyard. Includes share of freehold and on-street parking for convenience.

Council Tax band: A

Tenure: Share of Freehold

- Large Ground Floor One Bedroom Apartment
- Shared Rear Courtyard
- Double Bedroom with Fitted Wardrobes
- On Street Parking
- Close Proximity to City Centre & A38
- Feature Fireplace
- Storage Shed in the Courtyard
- Share of Freehold with a 965 year lease



# Ground Floor Flat

Pounds Park Road, Plymouth, PL3 4QP

Step into this stunning ground floor one-bedroom apartment, located in a prime spot with close proximity to the vibrant city centre and convenient access to the A38. This property boasts a spacious double bedroom with fitted wardrobes, perfect for a cosy retreat after a long day.

As you enter, you'll be greeted by a charming feature fireplace that adds character to the living space, creating a warm and inviting atmosphere. The design allows for seamless transitions between the living room, bedroom and kitchen, making it ideal for entertaining guests or simply relaxing in style.

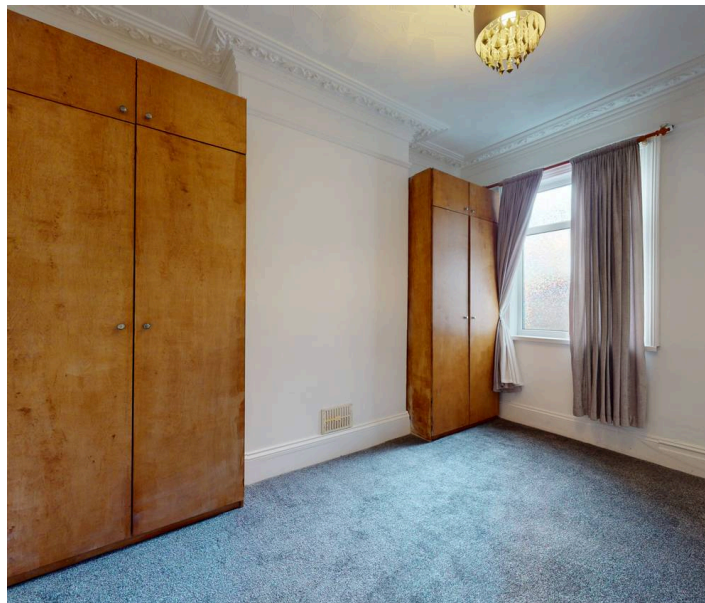
This property offers not only a comfortable living space but also practicality with ample storage both internally and externally, ensuring you can keep your living area clutter-free. The shared rear courtyard provides a tranquil outdoor space where you can unwind and enjoy the fresh air.

With the convenience of on-street parking, you'll never have to worry about finding a place for your vehicle.

Vendor Notes: The property has a shared freehold between the two flats and an arranged 965 year lease.

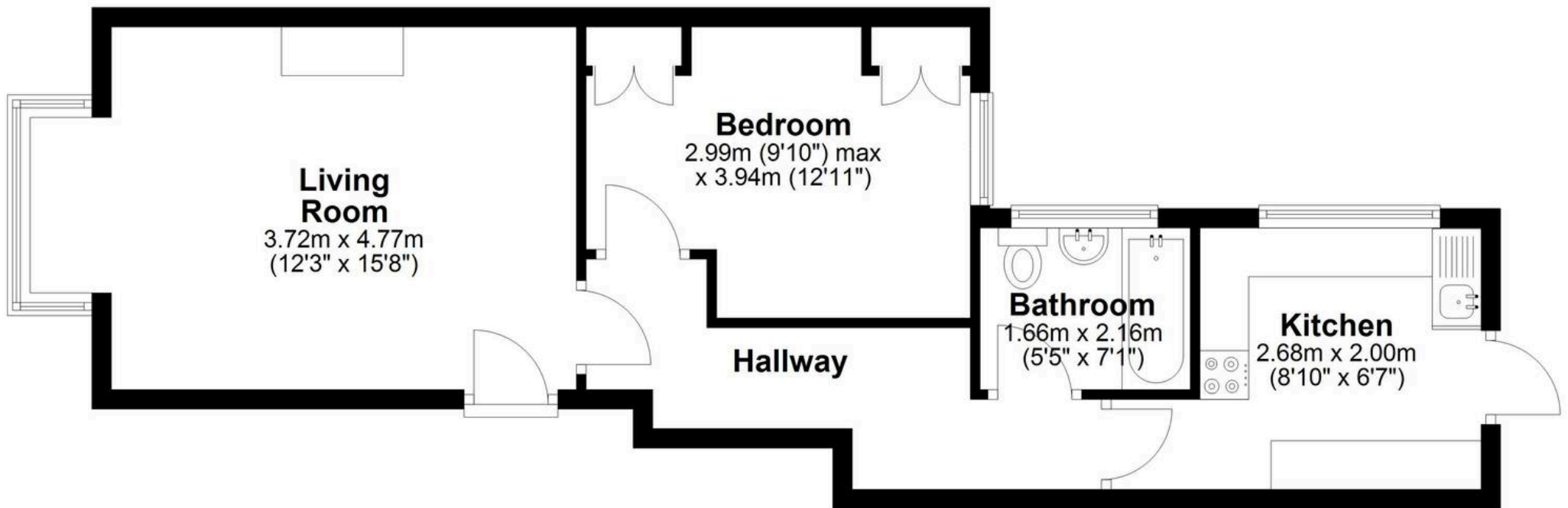
Council Tax band: A

Tenure: Share of Freehold



## Ground Floor

Approx. 49.7 sq. metres (535.0 sq. feet)



Total area: approx. 49.7 sq. metres (535.0 sq. feet)

**Pounds Park Road, Peverell**



## Atwell Martin

Atwell Martin, 65 Southside Street - PL1 2LA

01752 202121

[plymouthsales@atwell-martin.co.uk](mailto:plymouthsales@atwell-martin.co.uk)

[plymouth.atwellmartin.co.uk/](http://plymouth.atwellmartin.co.uk/)

Atwell Martin Plymouth endeavour to ensure the accuracy of property details produced and displayed. Please note that we have not tested any apparatus, equipment, fixtures, fittings or services and so cannot verify that they are connected, in working order or fit for purpose. It is imperative that the buyer of any property makes such checks, prior to purchase so as to satisfy themselves of the properties suitability for their purchase. .

