



  
**Andrew Pearce**  
PINNER

**HARLYN DRIVE, PINNER, MIDDLESEX, HA5 2DF**



**Unlock the potential of this three double-bedroom detached property, perfect for buyers eager to take on a renovation project. With no upper chain, this home offers a generous living space and an ultra-convenient location, making it an excellent opportunity for a growing family.**

The ground floor features an entrance hallway leading to one or two inviting reception rooms, along with a kitchen equipped with fitted units and a door that opens to the garden, creating a seamless indoor-outdoor flow. Upstairs, you'll find two spacious double bedrooms and a family shower room, ready for your personal touch.

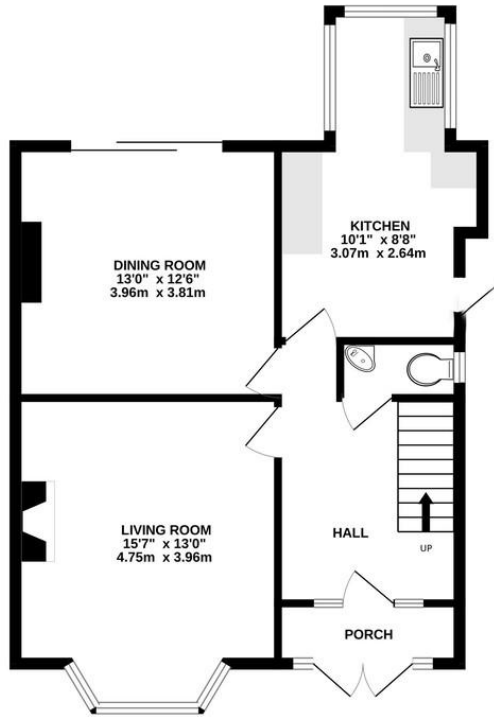
The outside space includes a rear garden with a lawn, shrubs, storage, and a patio, ideal for summer gatherings. Off-street parking is available at the front for your convenience.

Situated just steps from Northwood Hills High Street, you'll enjoy easy access to a variety of shops and eateries. Commuters will appreciate the numerous bus routes and the nearby Metropolitan Line station, providing quick links to Central London. Plus, you'll be close to several well-regarded schools, including Harlyn Primary School and Haydon School.

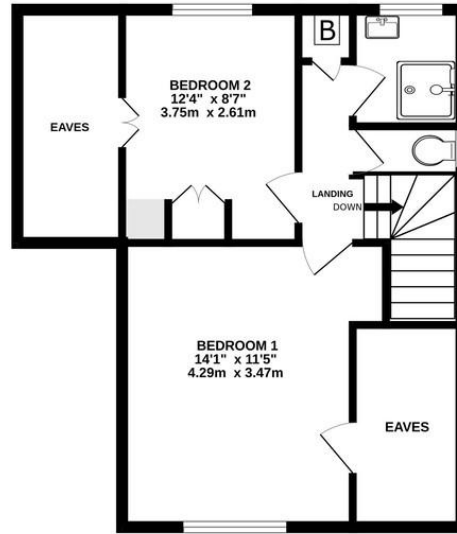


This property is a blank canvas awaiting your vision-don't miss your chance to create your dream home!

GROUND FLOOR  
612 sq.ft. (56.8 sq.m.) approx.



1ST FLOOR  
490 sq.ft. (45.5 sq.m.) approx.



TOTAL FLOOR AREA : 1102 sq.ft. (102.4 sq.m.) approx.

Whilst every attempt has been made to ensure the accuracy of the floorplan contained here, measurements of doors, windows, rooms and any other items are approximate and no responsibility is taken for any error, omission or mis-statement. This plan is for illustrative purposes only and should be used as such by any prospective purchaser. The services, systems and appliances shown have not been tested and no guarantee as to their operability or efficiency can be given.  
Made with Metropix ©2024



