

Pearl Street,

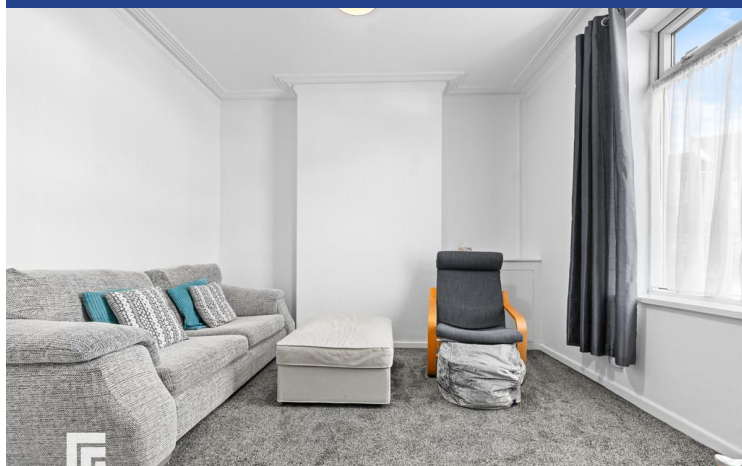
Adamsdown, Cardiff, CF24 1PN



Estate Agents and
Chartered Surveyors

Asking Price Of

£250,000



Three Bedroom Mid Terraced House

3

1

1

2

Property Description

BEAUTIFULLY PRESENTED, THREE BEDROOM, MID-TERRACED HOUSE IN ADAMSDOWN MGY are delighted to bring to market this immaculately presented and spacious, mid-terraced, three double bedroom house situated on Pearl Street, Adamsdown. The accommodation briefly comprises entrance hallway, lounge, dining room, kitchen, downstairs bathroom with separate WC, and three double bedrooms. The property further benefits from a well maintained rear garden, gas central heating and double glazing throughout. Viewing highly recommended.

Tenure Freehold

Council Tax Band D

Floor Area Approx 1,098 sq ft

Viewing Arrangements
Strictly by appointment

ENTRANCE HALL

Entered via front door leading from porch. Carpet to floor. Pendant light fitting. Radiator. Door to dining room and kitchen. Stairs rising to first floor.

LOUNGE

12' 5" x 11' 5" (3.80m x 3.50m)
Carpet to floor. Double glazed window to front aspect. Pendant light fitting. Radiator. Power points. Two alcoves. Opening to :-

DINING ROOM

11' 5" x 10' 5" (3.48m x 3.20m)
Continuation of carpet to floor. Pendant light fitting. Two alcoves. Double glazed window to rear aspect. Power points. Radiator.

KITCHEN

13' 8" x 9' 0" (4.18m x 2.76m)
Modern fitted kitchen with a range of wall, base and drawer units with worktops over incorporating stainless steel sink with hot and cold tap over. Space and plumbing for a washing machine. Space for fridge/freezer and cooker. Tiled splashback. Extractor fan. Double glazed window to side aspect. Pendant light fitting. Vinyl flooring. Wall mounted boiler. Power points. Door to bathroom. Door leading to rear garden.

BATHROOM

10' 0" x 6' 0" (3.06m x 1.84m)
Tiled flooring and tiled walls. Pedestal wash hand basin with hot and cold tap over. Panelled bath with hot and cold tap over. Extractor fan. Obscure double glazed window to rear aspect. Radiator. Pendant light fitting.

FIRST FLOOR

Split level landing. Carpet to floor. Pendant light fitting. Radiator. Doors to all bedrooms. Loft hatch.

MASTER BEDROOM

16' 1" x 11' 5" (4.92m x 3.50m)
Carpet to floor. Two double glazed windows to front aspect. Pendant light fitting. Power points. Radiator. Two alcoves.

BEDROOM TWO

11' 5" x 10' 5" (3.48m x 3.20m)
Carpet to floor. Double glazed window to rear aspect. Power points. Pendant light fitting. Radiator. Two alcoves.

BEDROOM THREE

13' 4" x 9' 0" (4.08m x 2.76m)
Carpet to floor. Pendant light fitting. Radiator. Power points. Double glazed window to rear aspect.

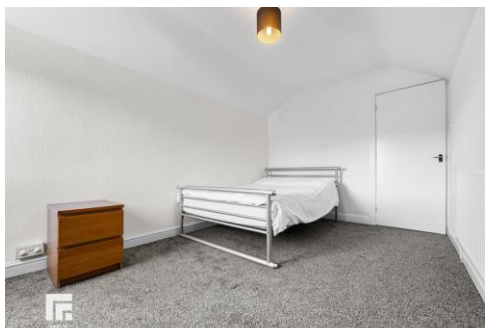
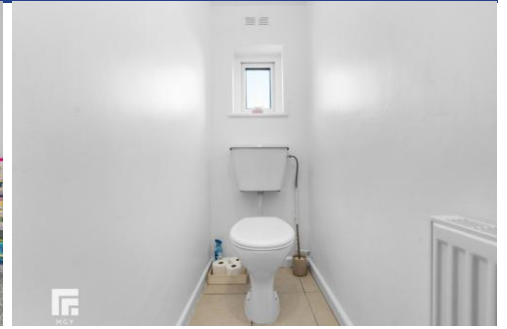
GARDEN

Laid to patio. Lawn area. Wall border. Flower beds. Door to outbuilding.

TENURE

MGY have been advised that this property is FREEHOLD.

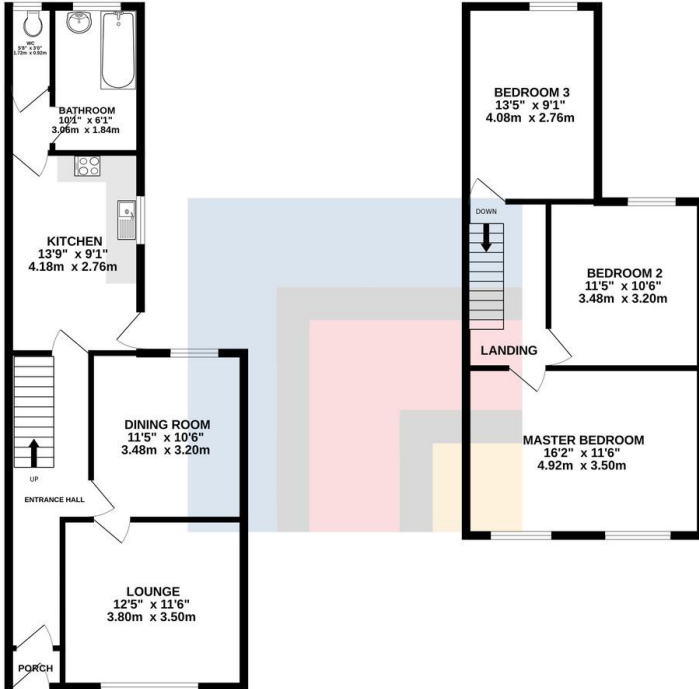
Pearl Street,
Adamsdown, Cardiff, CF24 1PN



Pearl Street, Adamsdown, Cardiff, CF24 1PN

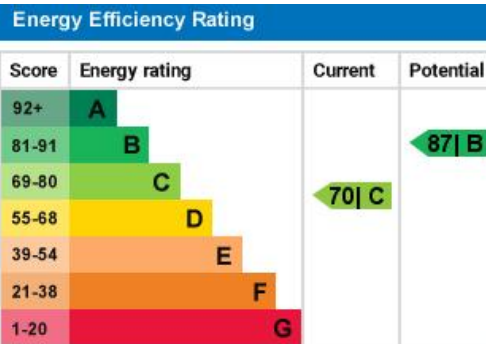
GROUND FLOOR
585 sq.ft. (54.3 sq.m.) approx.

1ST FLOOR
491 sq.ft. (45.6 sq.m.) approx.



TOTAL FLOOR AREA: 1075 sq.ft. (99.9 sq.m.) approx.

Whilst every attempt has been made to ensure the accuracy of the floorplan contained herein, measurements of doors, windows, floors and any other items are approximate and no responsibility is taken for any error, omission or mis-statement. This plan is for illustrative purposes only and should be used as such by any prospective purchaser. The services, systems and appliances shown have not been tested and no guarantee as to their operability or efficiency can be given.
Made with Mergin 10/2024



Cardiff 029 2046 5466

13 Mount Stuart Square, Cardiff Bay, Cardiff,
South Glamorgan, CF10 5EE



mgyc.co.uk

Important Notice: These particulars are prepared for guidance only and do not form whole or any part of any offer or contract. Whilst the particulars are given in good faith, they are not to be relied upon as being a statement or representation of fact. They are made without responsibility on the part of MGY Ltd or Vendor/lessor and the prospective purchaser/lessee should satisfy themselves by inspection or otherwise as to their accuracy. Neither MGY Ltd nor anyone in their employ, or the vendor/lessor, imply, make or give any representation/warranty whatsoever in relation to this property.