

Byrds Lane

Uttoxeter, Staffordshire, ST14 7NB

John
German





Byrds Lane

Uttoxeter, Staffordshire, ST14 7NB

£240,000

Well maintained and presented semi detached family sized home with extended ground floor accommodation, occupying a pleasant plot and position on the popular road.



Whether moving up or down the property ladder or for your first home, viewing and consideration of this lovely home is highly advised to appreciate its excellently extended ground floor accommodation to the rear and side which provides additional living space and a utility room, plus an impressive shower room. The property also has a delightful rear garden enjoying a degree of privacy as there are only single storey properties behind. Situated on the well regarded and popular road within easy reach of both local amenities which include Tynsel Parkes first school and the five shops, plus the town centre with its wide range of facilities.

An enclosed porch leads to the delightful lounge which extends to the full width of the home having a focal electric living flame effect fire and feature surround, stairs rising to the first floor with an understairs cupboard, and a wide bow window providing ample natural light. The extended kitchen now has a separate dining area overlooking the rear garden, having a range of base and eye level units with work surfaces and an inset sink unit, space for a cooker with extractor over, an integrated dishwasher plus a built in store cupboard and Karndean flooring. A part glazed door opens to the versatile extended sitting room, also overlooking the garden and equally adept to be used as a family room or study area depending on your needs. A sliding door in the dining area leads to the fitted utility room, having base and eye level units with a fitted worktop and an inset sink unit, plumbing for a washing machine and additional appliance space, plus a double glazed door and window to the garden, and the same Kamdean flooring as the kitchen. Completing the spacious ground floor accommodation is the impressive shower room having a modern white suite incorporating a double shower cubicle with a mixer shower over and complimentary splashbacks.

To the first floor, the landing has a side facing window, access to the loft and a built in airing cupboard housing the combination central heating boiler. Doors open to the three good size bedrooms, two of which can easily accommodate a double bed and furniture. Finally, there is the fitted family bathroom which has a white suite incorporating a panelled bath with an electric shower and folding screen above, plus tiled splashbacks.

Outside to the rear, a block paved patio extends to the full width of the plot, providing a lovely seating and entertaining area enjoying a degree of privacy, leading to the garden laid to lawn with well stocked borders containing a variety of shrubs and plants, space for shed, all enclosed to three sides by panelled fencing. To the front, there is a block paved driveway providing ample off road parking with a shrub border and leading to the garage which has an up and over door, power and light, plus direct access into the home.

What3words: warms.recount.absorbing

Tenure: Freehold (purchasers are advised to satisfy themselves as to the tenure via their legal representative).

Please note: It is quite common for some properties to have a Ring doorbell and internal recording devices.

Property construction: Standard. **Parking:** Drive & garage

Electricity supply: Mains. **Water supply:** Mains. **Sewerage:** Mains. **Heating:** Gas.
(Purchasers are advised to satisfy themselves as to their suitability).

Broadband type: See Ofcom link for speed: <https://checker.ofcom.org.uk/>

Mobile signal/coverage: See Ofcom link <https://checker.ofcom.org.uk/>

Local Authority/Tax Band: East Staffordshire Borough Council / Tax Band B

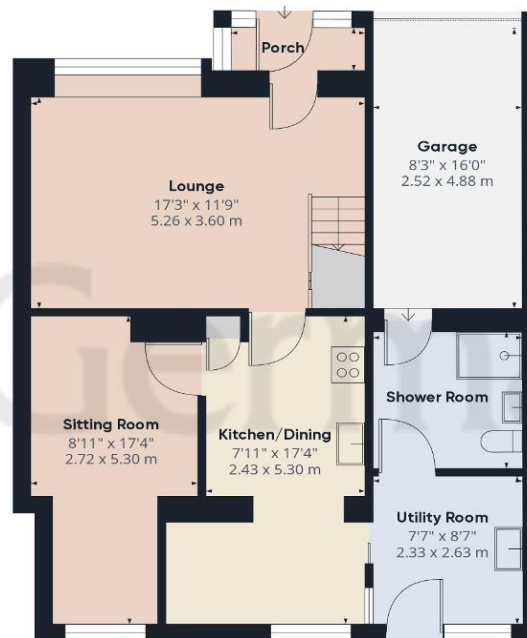
Useful Websites: www.gov.uk/government/organisations/environment-agency

Our Ref: JGA/06112024

The property information provided by John German Estate Agents Ltd is based on enquiries made of the vendor and from information available in the public domain. If there is any point on which you require further clarification, please contact the office and we will be pleased to check the information for you, particularly if contemplating travelling some distance to view the property. Please note if your enquiry is of a legal or structural nature, we advise you to seek advice from a qualified professional in their relevant field.





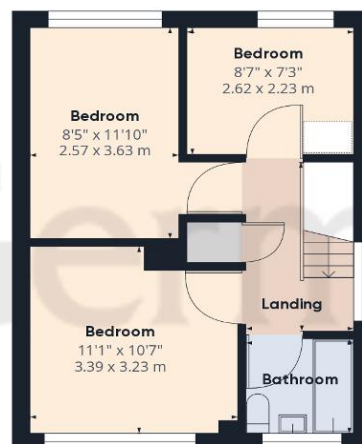


Ground Floor

Approximate total area⁽¹⁾

1143.67 ft²

106.25 m²



Floor 1

(1) Excluding balconies and terraces

While every attempt has been made to ensure accuracy, all measurements are approximate, not to scale. This floor plan is for illustrative purposes only.

Calculations are based on RICS IPMS 3C standard.

GIRAFFE360



Agents' Notes

These particulars do not constitute an offer or a contract neither do they form part of an offer or contract. The vendor does not make or give and Messrs. John German nor any person employed has any authority to make or give any representation or warranty, written or oral, in relation to this property. Whilst we endeavour to make our sales details accurate and reliable, if there is any point which is of particular importance to you, please contact the office and we will be pleased to check the information for you, particularly if contemplating travelling some distance to view the property. None of the services or appliances to the property have been tested and any prospective purchasers should satisfy themselves as to their adequacy prior to committing themselves to purchase.

Referral Fees

Mortgage Services - We routinely refer all clients to APR Money Limited. It is your decision whether you choose to deal with APR Money Limited. In making that decision, you should know that we receive on average £60 per referral from APR Money Limited.

Conveyancing Services - If we refer clients to recommended conveyancers, it is your decision whether you choose to deal with this conveyancer. In making that decision, you should know that we receive on average £150 per referral.

Survey Services - If we refer clients to recommended surveyors, it is your decision whether you choose to deal with this surveyor. In making that decision, you should know that we receive up to £90 per referral.

Score	Energy rating	Current	Potential
92+	A		
81-91	B		81 B
69-80	C		
55-68	D	63 D	
39-54	E		
21-38	F		
1-20	G		



John German

9a Market Place, Uttoxeter, Staffordshire, ST14 8HY

01889 567444

uttoxeter@johnngerman.co.uk

Ashbourne | Ashby de la Zouch | Barton under Needwood
Burton upon Trent | Derby | East Leake | Lichfield
Loughborough | Stafford | Uttoxeter

JohnGerman.co.uk Sales and Lettings Agent



