



1 Regent Road

Blackpool, FY1 4LY

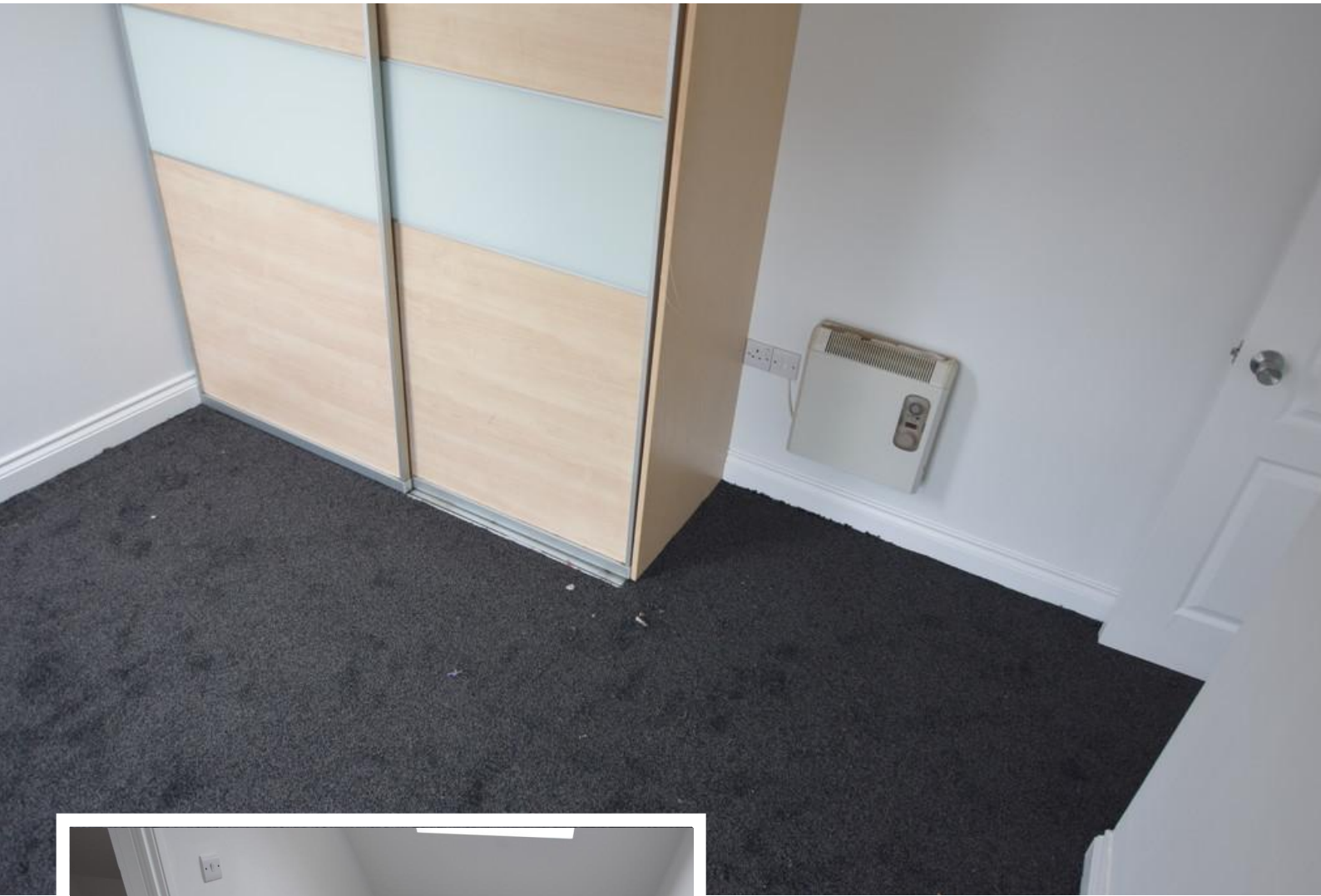
- **2 BEDROOM MAISONETTE FLAT**
- **LOUNGE WITH BALCONY**
- **2 BEDROOMS WITH FITED ROBES**
- **MOVE IN COSTS £1345.00**

£625 pcm

EPC Rating '60'



Flat 4, Goodwood Place, 1 Regent Road, Blackpool, FY1 4LY



Property Description

NEW TO MARKET 2 BED APARTMENT PLACED ON THE 2ND FLOOR, WITHIN WALKING DISTANCE OF BLACKPOOL TOWN CENTER. COMPRISING COMMUNAL ENTRANCE HALL, LEADING INTO FLAT.

ENTRANCE HALLWAY, LOUNGE WITH BALCONY. KITCHEN WITH RANGE OF WALL AND BASE UNITS, ELECTRIC OVEN AND HOB.

MAISONETTE 2 BEDROOMS WITH FITTED ROBES. SHOWER ROOM WITH CORNER SHOWER CUBICLE, WC AND WASH HAND BASIN.

ELECTRIC HEATING, DOUBLE GLAZED WINDOWS / DOORS

KITCHEN

9' 17" x 6' 04" (3.18m x 1.93m) FITTED KITCHEN WITH RANGE OF WALL AND BASE UNITS, ELECTRIC OVEN AND HOB



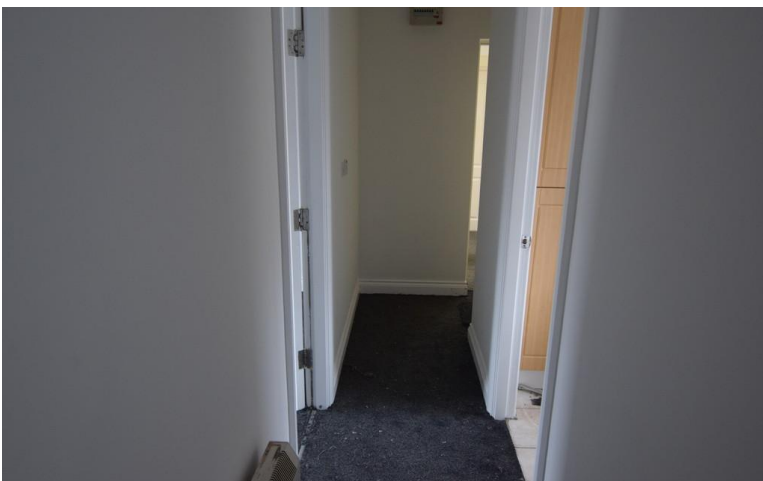
LOUNGE
WITH UPVC DOORS LEADING TO BALCONY

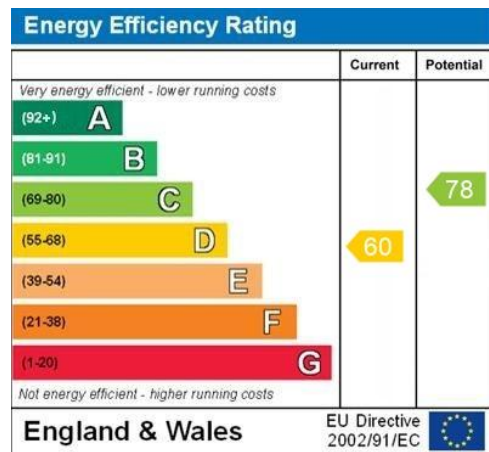
BEDROOM
9' 80" x 9' 54" (4.78m x 4.11m) BEDROOM WITH
FITTED ROBES

BEDROOM
9' 79" x 8' 67" (4.75m x 4.14m) BEDROOM WITH
FITTED ROBES



SHOWER ROOM
6' 64" x 4' 93" (3.45m x 3.58m) SHOWER ROOM
WITH CORNER CUBICLE, WC AND WASH HAND
BASIN





21 Counce Street
 Blackpool
 Lancashire
 FY1 3LA

www.moveholmes.co.uk
 01253 928200
enquiries@moveholmes.co.uk

Agents Note: Whilst every care has been taken to prepare these sales particulars, they are for guidance purposes only. All measurements are approximate and are for general guidance purposes only and whilst every care has been taken to ensure their accuracy, they should not be relied upon and potential buyers are advised to recheck the measurements