



FOR SALE

4 Bed Semi-Detached House in Scalborough Close, Countesthorpe LE8

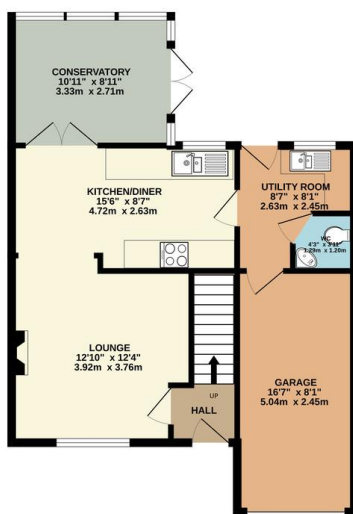
5XH

Offers Over £350,000

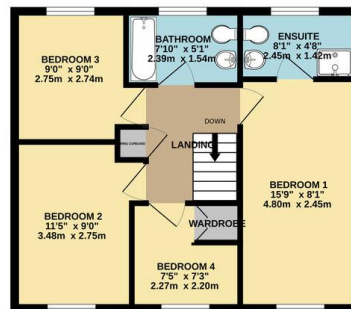
An impressive and spacious four bedroom semi detached property located in the desirable area of Countesthorpe, LE8. This extended home is perfect for families, offering light and spacious living space. The property boasts a generous master bedroom complete with en-suite, three additional well sized bedrooms and a stylish family bathroom. On the ground floor, the accommodation includes a welcoming entrance hall, a contemporary kitchen / diner and a convenient utility room and W.C. A bright orangery leads to the beautifully landscaped garden.



GROUND FLOOR
613 sq.ft. (57.0 sq.m.) approx.



1ST FLOOR
480 sq.ft. (44.6 sq.m.) approx.



TOTAL FLOOR AREA - 1094 sq.ft. (101.6 sq.m.) approx.

Whilst every attempt has been made to ensure the accuracy of the floorplan contained here, measurements of doors, windows, rooms and any other items are approximate and no responsibility is taken for any error, omission or mis-statement. This plan is for illustrative purposes only and should be used as such by any prospective purchaser. The services, systems and appliances shown have not been tested and no guarantee as to their operability or efficiency can be given.
Made with Metropix ©2024

Energy Efficiency Rating		Current	Potential
Very energy efficient - lower running costs			
(92-100)	A		
(81-91)	B		86
(69-80)	C		73
(55-68)	D		
(39-54)	E		
(21-38)	F		
(1-20)	G		
Not energy efficient - higher running costs			
England, Scotland & Wales		EU Directive 2002/91/EC	

- Extended Four Bedroom
- Semi Detached
- Highly Desirable Location
- Conservatory
- Utility & Ground Floor W.C
- Master Ensuite
- Well Presented Throughout
- No Upward Chain

Agents Note: Whilst every care has been taken to prepare these sales particulars, they are for guidance purposes only. All measurements are approximate and for general guidance purposes only and whilst every care has been taken to ensure their accuracy, they should not be relied upon and potential buyers are advised to recheck the measurements.

