



# 8 Fairinsfell, Broxburn

Offers Over £148,000



# 8 Fairinsfell

Broxburn

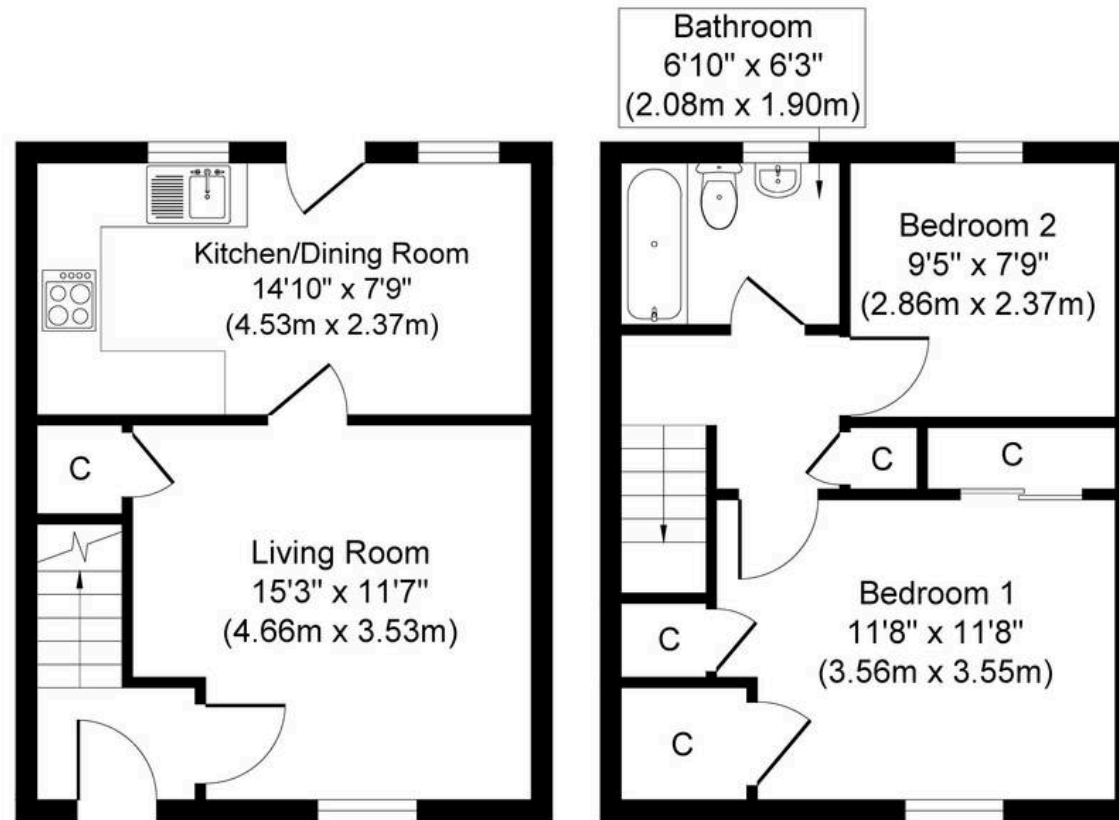
Immaculate 2-bed terrace in popular area. Chain-free purchase. Stylish kitchen, spacious bedrooms, ample storage. Tranquil enclosed garden, driveway parking. Ideal for first-time buyers/investors seeking move-in ready home with modern features.

Council Tax band: B

Tenure: Freehold

- Two Bedroom Terrace House
- Move In Condition
- Perfect For First Time Buyers And Investors
- Two Double Bedrooms
- Chain Free Purchase
- Contemporary Designed Kitchen
- Popular Residential Area
- Private Fully Enclosed Rear Garden
- Front Driveway
- Good Storage Throughout





**Ground Floor**  
**Approximate Floor Area**  
**301 sq. ft**  
**(27.96 sq. m)**

**First Floor**  
**Approximate Floor Area**  
**301 sq. ft**  
**(27.96 sq. m)**

Whilst every attempt has been made to ensure the accuracy of the floor plan contained here, measurements of doors, windows, rooms and any other items are approximate and no responsibility is taken for any error, omission, or mis-statement. The measurements should not be relied upon for valuation, transaction and/or funding purposes. This plan is for illustrative purposes only and should be used as such by any prospective purchaser or tenant.

The services, systems and appliances shown have not been tested and no guarantee as to their operability or efficiency can be given.

Copyright V360 Ltd 2024 | [www.houseviz.com](http://www.houseviz.com)



## **KnightBain Estate Agents**

**Knightbain, 4 Greendykes Road, Broxburn - EH52 5AG**

01506 852000

[info@knightbain.co.uk](mailto:info@knightbain.co.uk)

[www.knightbain.co.uk/](http://www.knightbain.co.uk/)

